



**SCAN**  
SOUTH CAROLINA  
ASSOCIATION OF  
NATURALISTS

843.708.9901  
scnaturalists76@gmail.com  
PO Box 24911, Columbia, SC 29224

## APRIL 2026

### **LAST MONTH: Carolina Sandhills NWR**

Last month, SCAN visited Carolina Sandhills National Wildlife Refuge as one of our return trips, tracing SCAN's steps from 50 years ago through our first two years as an organization. We were rewarded with the sight of the Sandhills in spring, a new season for SCAN to doodle at the site. We even managed to stumble upon a Frosted Elfin (*Callophrys irus*), a new species for the SCAN database and also a federally endangered species of butterfly, which depends on Lupines (*Lupinus* spp.) and Wild-Indigos (*Baptisia* spp.) as its hosts and a well-managed Longleaf Pine Savanna to sustain the habitat it prefers and the life cycle of its preferred host plants.

*Tom Austin, Database Manager & Southern Regional Director*

---

### **THIS MONTH: Forty Acre Rock Heritage Preserve and Wildlife Management Area**

Continuing the theme of revisiting some of the first SCAN outing locations, we're headed to Forty Acre Rock! First visited in May 1976, this is one of SCAN's favorite spots. We've visited seven times in total over the years. Wear shoes with good tread as the rock bald can be slippery. We'll park in the lower lot, work our way up to the rock, eat lunch and explore, then enjoy an easier trip downhill back to the cars.

*Kim McManus, Secretary & Webkeeper*

---

### **NEXT MONTH: Under a Low Country Moon Camping and Blessing Plantation**

It's almost time!! Start making plans to join us over Memorial Day weekend for a five-day bioblitz in the Francis Marion National Forest. Die-hards will set up at the Hell Hole camp on Thursday, May 21 and stick around until lunchtime on Monday, May 25. The campsite is simply a field, so bring everything you'll need, especially lots of water and bug spray! Treat your clothing and gear with Permethrin ahead of time; the ticks are already out in full force. Pack it in, pack it out. Most of the days are unstructured, with folks coming and going as they road cruise for snakes, explore Carolina Bays, and walk under the stars to find nocturnal creatures and enjoy the firefly shows. If camping isn't your thing, find a hotel now! Rumor has it that rooms are very difficult to find already.

On Saturday, our official outing will be to Blessing Plantation. This is an extra special treat as the property is not currently open to the general public. On top of that, Cypress Gardens naturalist and Under a Low Country Moon regular Gabe Schuler will be onsite to help us find all the cool stuff. After we finish exploring, we'll reconvene at the Hell Hole campsite for a potluck dinner. What's your campground dish specialty? We can't wait to find out!

*Kim McManus, Secretary & Webkeeper*

**Photos from Carolina Sandhills NWR**



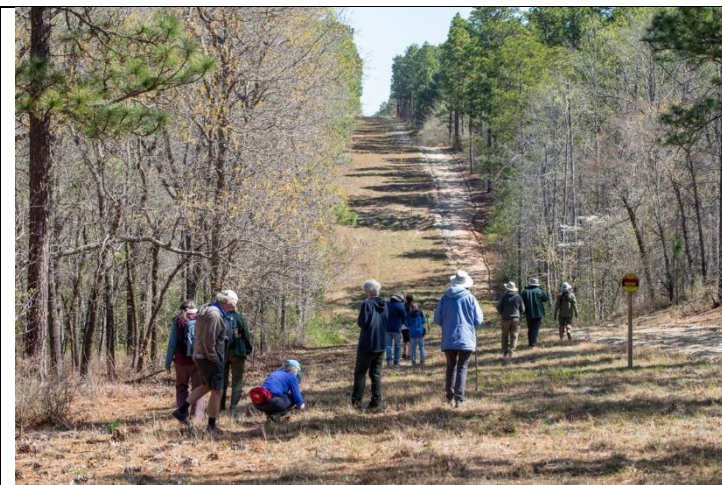
**Attendees:**

Scott Wietecha, Dave Schuetrum, Kyle Welte, Lee Morris, Gordon Murphy, Nancy Adamson, Caroline Eastman, Marty Kastner, John Demko, Tom Austin, Rita Zollinger, Leila Nyikos, Eric Schaub, Julianna Nyikos, Sarah Nyikos, Danny Rumble, Dave Kastner, Dwight Moffat, Kim McManus, Kate Hartley

---



Documenting the endangered Frosted Elfin



Exploring  
Kim McManus



Pink Sundew (*Drosera capillaris*)  
Kim McManus



Hopper  
Kim McManus



Killdeer (*Charadrius vociferus*)  
Kim McManus



Scott Wietecha inspecting Pyxiemoss  
Kim McManus



Sandhill Pyxiemoss (*Pyxidantha brevifolia*)  
Kim McManus



Skyblue Lupine (*Lupinus diffusus*)  
Kim McManus



Frosted Elfin (*Callophrys irus*)  
Kim McManus



Lunch!  
Kim McManus



Bird's Foot Violet (*Viola pedata*)  
Kim McManus



Water feature  
Kim McManus



Exploring is fun!  
Kim McManus

## Forty Acre Rock Heritage Preserve and WMA

Lancaster County, South Carolina  
0 Nature Reserve Road, Kershaw, SC 29067  
34.6594, -80.5170  
April 25, 2026 | 10:30am to 4:30pm

Forty Acre Rock HP/WMA is a nearly 3,200-acre conservation property in Lancaster County, SC, just outside of the towns of Lancaster and Kershaw. It is owned and managed by the SC Department of Natural Resources for a wide array of public uses including hunting, hiking, and the conservation of rare and imperiled species. The property is home to the namesake Forty Acre Rock, which is large granitic bald, a slab of solid rock that has been exposed to the elements since the scour action of glaciers in the last ice age (it's also only 14 acres, but who's counting). This granitic outcropping is home to some interesting, endemic species of rare plant, such as the Elf Orpine (*Diamorpha smalli*) that may still be in bloom for our visit. The thin, droughty soils of the outcrop promote both an interesting botanical community on top of the rock and shape some of the more common vegetation that survives there into novel shapes and forms, like the many "bonsai" Eastern Redcedars that pepper its facade. At the same time, the sharp change in elevation beneath the rock allows for a quick transition between soil types and moisture levels, concentrating biodiversity around the rock through the ecotone effect. There's even a waterfall or two. What that means is there is a lot to see in just the 40 acres on and surrounding the rock!

The trails at Forty Acre Rock are about 2.5 miles in total. There is a gradual uphill change in elevation from the lower parking area (where we'll meet) to the rock itself. There is a steeper ascent from the base of the rock up to its face. When SCANNING the rock itself, be mindful of where you step, keep your feet on the rock itself and please avoid stepping in the vernal pools or on any vegetation. The rock is open, hot, and sunny. So please dress for hot sun and bring plenty of water. There are no restrooms on site. This month's trip will be during SC turkey season (Apr.3rd - May 2nd). So please stay fairly close to the main trail loop, to be mindful and respectful of any turkey hunters present on the property and the shared public uses of this WMA.

Following our regularly scheduled, soodle, those that are feeling peckish will convene about 10 miles south in Kershaw, SC for feasting and fellowship (location TBD during the Saturday morning briefing). Please join us!

### **Directions from Interstate 20:** (34.6594, -80.5170) [Forty Acre Rock **Lower Parking Area**]

- From I-20, turn north onto US-601 towards Lugoff, continue for 5.6mi.
- From US-601, turn left at the light in Camden onto US-521 BYP, continue for 3.9mi.
- From US-521 BYP, turn left at its end back onto US-601, continue for 18.5mi.
- Turn right in Kershaw onto E. Hilton St to remain on US-601, continue for 8.7mi.
- From US-601, turn left onto Nature Reserve Rd (S-29-27).
- In about 0.4mi, the **Lower Parking Area** will be on your left.

Todd Johnston  
Northern Regional Director

**Carolina Sandhills NWR**  
**Chesterfield Co., SC**  
**March 28, 2026**

This list was produced by SCAN from sightings produced by SCAN members and is subject to revision as needed. An asterisk (\*) indicates a new sighting for SCAN. Send any changes or corrections to Tom Austin at [scnaturalists76@gmail.com](mailto:scnaturalists76@gmail.com). Please indicate exactly to which flora/fauna list you are referring to in the subject line of your message. Thank you.

**LICHENS**

*Cladonia evansii*  
*Cladonia leporina*  
*Cladonia subtenuis*  
*Cladonia grayi*  
*Cladonia sp.*  
*Chrysothrix sp.*

**FLORA**

**Peat Moss**

*Sphagnum sp.*

**Southern Bog Clubmoss**

*Lycopodiella appressa*

**Cinnamon Fern**

*Osmundastrum cinnamomeum*

**Bracken**

*Pteridium aquilinum*

**Netted Chain Fern**

*Woodwardia areolata*

**Longleaf Pine**

*Pinus palustris*

**Pond Pine**

*Pinus serotina*

**Loblolly Pine**

*Pinus taeda*

**Atlantic White-cedar**

*Chamaecyparis thyoides*

**Water-shield**

*Brasenia schreberi*

**White Water-lily**

*Nymphaea odorata*

**Tulip-tree**

*Liriodendron tulipifera*

**Swamp Bay**

*Persea palustris*

**Sassafras**

*Sassafras albidum*

**Whiteleaf Greenbrier**

*Smilax glauca*

**Bamboo-vine**

*Smilax laurifolia*

**Fringed Orchid**

*Platanthera sp.*

**Savanna Iris**

*Iris tridentata*

**Dwarf Iris**

*Iris verna*

**Curlyleaf Yucca**

*Yucca filamentosa*

**Yellow-eyed Grass**

*Xyris sp.*

**Soft Rush**

*Juncus effusus*

**Toadrush**

*Bulbostylis sp.*

**Sedge**

*Carex sp.*

**Woolly Bulrush**

*Scirpus cyperinus*

**Common Bushy Bluestem**

*Andropogon glomeratus*

**Splitbeard Bluestem**

*Andropogon ternarius*

**Old-field Broomstraw**

*Andropogon virginicus*

**Carolina Wiregrass**

*Aristida stricta*

**Dune Three-awn**

*Aristida tuberculosa*

**Switch Cane**

*Arundinaria tecta*

**Toothache Grass**

*Ctenium aromaticum*

**Hairy Rosette-Grass**

*Dichanthelium acuminatum*

**Needle-leaf Witchgrass**

*Dichanthelium aciculare*

**Variable Witchgrass**

*Dichanthelium commutatum*

**Open-flower Witchgrass**

*Dichanthelium laxiflorum*

**Tall Swamp Witchgrass**

*Dichanthelium scabriusculum*

**Velvet Witchgrass**

*Dichanthelium scoparium*

**Deertongue Grass**

*Dichanthelium clandestinum*

**Witchgrass**

*Dichanthelium sp.*

**Lovegrass**

*Eragrostis sp.*

**Centipede Grass**

*Eremochloa ophiuroides*

**Maidencane**

*Hymenachne hemitoma*

**Bitter Seabeach Grass**

*Panicum amarum*

**Annual Bluegrass**

*Poa annua*

**Silver Plume Grass**

*Saccharum alopecuroides*

**Giant Plume Grass**

*Saccharum giganteum*

**Little Bluestem**

*Schizachyrium scoparium*

**Sandhills Dropseed**

*Sporobolus junceus*

**Redtop**

*Tridens flavus*

**Southern Water-milfoil**

*Myriophyllum heterophyllum*

**Muscadine**

*Vitis rotundifolia*

**Carolina Wild Indigo**

*Baptisia cinerea*

**Wild Indigo**

*Baptisia sp.*

**Roundleaf Tick-trefoil**

*Desmodium rotundifolium*

**Naked Tick-trefoil**

*Hylodesmum nudiflorum*

**Bush-clover**

*Lespedeza capitata*

**Sericea Lespedeza**

*Lespedeza cuneata*

**Blue Sandhill Lupine**

*Lupinus diffusus*

**Virginia Goat's-rue**

*Tephrosia virginiana*

**Low Hop Clover**

*Trifolium dubium*

**Chinese Wisteria**

*Wisteria sinensis*

**Downy Serviceberry**

*Amelanchier arborea*

**Red Chokeberry**

*Aronia arbutifolia*

<b>Running Five-fingers</b>	<i>Potentilla canadensis</i>	<b>Meadow-beauty</b>	<i>Rhexia sp.</i>	<b>Carolina Jessamine</b>	<i>Gelsemium sempervirens</i>
<b>Chickasaw Plum</b>	<i>Prunus angustifolia</i>	<b>Winged Sumac</b>	<i>Rhus copallinum</i>	<b>Sandhills Bluestar</b>	<i>Amsonia ciliata</i>
<b>Black Cherry</b>	<i>Prunus serotina</i>	<b>Red Maple</b>	<i>Acer rubrum</i>	<b>Common Toadflax</b>	<i>Linaria canadensis</i>
<b>Southern Blackberry</b>	<i>Rubus argutus</i>	<b>Hairy Pinweed</b>	<i>Lechea mucronata</i>	<b>Buckhorn Plantain</b>	<i>Plantago aristata</i>
<b>Sand Blackberry</b>	<i>Rubus cuneifolius</i>	<b>Bittercress</b>	<i>Cardamine sp.</i>	<b>Virginia Plantain</b>	<i>Plantago virginica</i>
<b>Southern Red Oak</b>	<i>Quercus falcata</i>	<b>Shepherd's Cress</b>	<i>Teesdalia nudicaulis</i>	<b>Slender Bladderwort</b>	<i>Utricularia subulata</i>
<b>Sand Live Oak</b>	<i>Quercus geminata</i>	<b>Wild Dock</b>	<i>Rumex hastatulus</i>	<b>Bladderwort</b>	<i>Utricularia sp.</i>
<b>Turkey Oak</b>	<i>Quercus laevis</i>	<b>Pink Sundew</b>	<i>Drosera capillaris</i>	<b>Vervain</b>	<i>Verbena sp.</i>
<b>Sand Post Oak</b>	<i>Quercus margaretae</i>	<b>Water Sundew</b>	<i>Drosera intermedia</i>	<b>Henbit Deadnettle</b>	<i>Lamium amplexicaule</i>
<b>Blackjack Oak</b>	<i>Quercus marilandica</i>	<b>Carolina Sandwort</b>	<i>Mononeuria caroliniana</i>	<b>Southern Oak-leech</b>	<i>Aureolaria pectinata</i>
<b>Common Wax-myrtle</b>	<i>Morella cerifera</i>	<b>Eastern Prickly-Pear</b>	<i>Opuntia humifusa</i>	<b>Big Gallberry</b>	<i>Ilex coriacea</i>
<b>Pignut Hickory</b>	<i>Carya glabra</i>	<b>Flowering Dogwood</b>	<i>Cornus florida</i>	<b>Little Gallberry</b>	<i>Ilex glabra</i>
<b>Tag Alder</b>	<i>Alnus serrulata</i>	<b>American Persimmon</b>	<i>Diospyros virginiana</i>	<b>American Holly</b>	<i>Ilex opaca</i>
<b>Southern Yellow Wood-sorrel</b>	<i>Oxalis dillenii</i>	<b>Sweetleaf</b>	<i>Symplocos tinctoria</i>	<b>Wahlenbergia</b>	<i>Wahlenbergia marginata</i>
<b>Pinweed</b>	<i>Hypericum gentianoides</i>	<b>Sandhill Pyxiemoss</b>	<i>Pyxidantha brevifolia</i>	<b>Pussytoes</b>	<i>Antennaria sp.</i>
<b>Lloyd's St.-John's-wort</b>	<i>Hypericum lloydii</i>	<b>Yellow Pitcherplant</b>	<i>Sarracenia flava</i>	<b>Cottonleaf Golden-aster</b>	<i>Chrysopsis gossypina</i>
<b>Bird's-foot Violet</b>	<i>Viola pedata</i>	<b>Ti-ti</b>	<i>Cyrilla racemiflora</i>	<b>Sandhill Thistle</b>	<i>Cirsium repandum</i>
<b>Primrose-leaf Violet</b>	<i>Viola primulifolia</i>	<b>Trailing Arbutus</b>	<i>Epigaea repens</i>	<b>Larkspurleaf Tickseed</b>	<i>Coreopsis delphiniifolia</i>
<b>Arrowleaf Violet</b>	<i>Viola sagittata</i>	<b>Shining Fetterbush</b>	<i>Lyonia lucida</i>	<b>Scratch-daisy</b>	<i>Croptilon divaricatum</i>
<b>Black Willow</b>	<i>Salix nigra</i>	<b>Sourwood</b>	<i>Oxydendrum arboreum</i>	<b>Southern Elephant's-foot</b>	<i>Elephantopus elatus</i>
<b>Tread-softly</b>	<i>Cnidioscolus stimulosus</i>	<b>Sparkleberry</b>	<i>Vaccinium arboreum</i>	<b>Common Elephant's-foot</b>	<i>Elephantopus tomentosus</i>
<b>White Sandhills Spurge</b>	<i>Euphorbia curtisii</i>	<b>Smooth Highbush Blueberry</b>	<i>Vaccinium corymbosum</i>	<b>Common Horseweed</b>	<i>Erigeron canadensis</i>
<b>Carolina Ipecac</b>	<i>Euphorbia ipecacuanhae</i>	<b>Creeping Blueberry</b>	<i>Vaccinium crassifolium</i>	<b>Coastal Dog-fennel</b>	<i>Eupatorium compositifolium</i>
<b>Carolina Crane's-bill</b>	<i>Geranium carolinianum</i>	<b>Elliott's Blueberry</b>	<i>Vaccinium elliotii</i>	<b>American Cudweed</b>	<i>Gamochaeta americana</i>
<b>Alternate-leaved Seedbox</b>	<i>Ludwigia alternifolia</i>	<b>Black highbush blueberry</b>	<i>Vaccinium fuscatum</i>	<b>Narrowleaf Purple Cudweed</b>	<i>Gamochaeta calviceps</i>
<b>Common Evening-primrose</b>	<i>Oenothera biennis</i>	<b>Southern Blueberry</b>	<i>Vaccinium tenellum</i>	<b>Camphorweed</b>	<i>Heterotheca subaxillaris</i>
<b>Cutleaf Evening-primrose</b>	<i>Oenothera laciniata</i>	<b>Tiny Bluet</b>	<i>Houstonia pusilla</i>	<b>Beaked Hawkweed</b>	<i>Hieracium gronovii</i>

**Veiny Hawkweed***Hieracium venosum***Spotted Cat's-ear***Hypochaeris radicata***Virginia Dwarf-dandelion***Krigia virginica***Grass-leaved Lettuce***Lactuca graminifolia***Pineland Silkgrass***Pityopsis aspera***Grass-leaved Golden-aster***Pityopsis graminifolia***Fragrant Rabbit-tobacco***Pseudognaphalium obtusifolium***Licorice Goldenrod***Solidago odora***American Aster***Symphotrichum sp.***Flatwoods Ironweed***Vernonia acaulis***Black Knot***Dibotryon morbosum***FAUNA****Southern Black Widow***Latrodectus mactans***Brown Winter Grasshopper***Amblytropidia mysteca***Green-striped Grasshopper***Chortophaga viridifasciata***American Bird Grasshopper***Schistocerca americana***Mischievous Bird Grasshopper***Schistocerca damnifica***Three-cornered Alfalfa Hopper***Spissistilus festinus***Red Bay Gall Psyllid***Trioza magnoliae***Antlion; Doodlebug***Myrmeleon sp.***Red Imported Fire Ant***Solenopsis invicta***Paper Wasp***Polistes sp.***Feather-legged Scoliid Wasp***Dielis plumipes***Eastern Carpenter Bee***Xylocopa virginica***Bumblebee***Bombus impatiens***Bee-like Robber Fly***Laphria cinerea***Bee Fly***Bombylius major***Bee Fly***Bombylius sp.***Phanogomphus Clubtail***Phanogomphus sp.***Stream Cruiser***Didymops transversa***Common Baskettail***Epitheca cynosura***Mantled Baskettail***Epitheca semiaquea***Blue Corporal***Ladona deplanata***Forktail***Ischnura sp.***Fragile forktail***Ischnura posita***Black Swallowtail***Papilio polyxenes***Eastern Tiger Swallowtail***Papilio glaucus***Spicebush Swallowtail***Papilio troilus***Palamedes Swallowtail***Papilio palamedes***Sleepy Orange***Abaeis nicippe***Brown Elfin***Callophrys augustinus***Frosted Elfin***Callophrys irus***Eastern Tailed-blue***Cupido comyntas***Spring Azure***Celastrina ladon***Gray hairstreak***Strymon melinus***Variiegated Fritillary***Euptoieta claudia***Pearl Crescent***Phyciodes tharos***American Lady***Vanessa virginiensis***Painted Lady***Vanessa cardui***Common Buckeye***Junonia coenia***Southern Cloudywing***Thorybes bathyllus***Northern Cloudywing***Cecropterus pylades***Sleepy Duskywing***Erynnis brizo***Juvenal's Duskywing***Erynnis juvenalis***Three-lined Grapholita***Grapholita tristrigana***Pine Webworm Moth***Pococera robustella***Fine-lined Gray***Exelis pyrolaria***Polyphemus Moth***Antheraea polyphemus***Eight-spotted Forester Moth***Alypia octomaculata***White-spotted Brown***Diastictis ventralis***Eastern Mosquitofish***Gambusia holbrooki***Southern Cricket Frog***Acris gryllus***Yellow-bellied Slider***Trachemys scripta scripta***Eastern Fence Lizard***Sceloporus undulatus***Canada Goose***Branta canadensis***Killdeer***Charadrius vociferus***Turkey Vulture***Cathartes aura***Bald Eagle***Haliaeetus leucocephalus***Red-shouldered Hawk***Buteo lineatus***Wild Turkey***Meleagris gallopavo***Mourning Dove***Zenaida macroura***Red-bellied Woodpecker***Melanerpes carolinus***Eastern Phoebe***Sayornis phoebe***Northern Rough-winged Swallow***Stelgidopteryx serripennis***American Crow***Corvus brachyrhynchos***Fish Crow***Corvus ossifragus***Tufted Titmouse***Baeolophus bicolor***Carolina Chickadee***Poecile carolinensis***Brown-headed Nuthatch***Sitta pusilla***Carolina Wren***Thryothorus ludovicianus***Blue-gray Gnatcatcher***Poliioptila caerulea*

**Eastern Bluebird**

*Sialia sialis*

**American Robin**

*Turdus migratorius*

**Gray Catbird**

*Dumetella carolinensis*

**Northern Mockingbird**

*Mimus polyglottos*

**White-eyed Vireo**

*Vireo griseus*

**Yellow-throated Vireo**

*Vireo flavifrons*

**Blue-headed Vireo**

*Vireo solitarius*

**Pine Warbler**

*Setophaga pinus*

**Common Yellowthroat**

*Geothlypis trichas*

**Northern Cardinal**

*Cardinalis cardinalis*

**Eastern Towhee**

*Pipilo erythrophthalmus*

**Savannah Sparrow**

*Passerculus sandwichensis*

**Chipping Sparrow**

*Spizella passerina*

**American Beaver**

*Castor canadensis*

**Coyote**

*Canis latrans*

**American Raccoon**

*Procyon lotor*

**Feral Pig**

*Sus scrofa*

**White-tailed Deer**

*Odocoileus virginianus*