



## MARCH 2026

### LAST MONTH: Lee Falls Natural Area

We had an amazing trip last month in February to Lee Falls Natural Area! The weather was spring-like, flowers were blooming, and we saw a variety of plants and critters – except birds. Go figure. But four species of butterflies!

Wandering through the field during the first section of the trail saw SCANners do one of the things we do best: scatter! We wandered to and up the bluffs to check out trillium and heartleaf, tramped down to Tamassee Creek to a vernal pool chock full of so many tadpoles they were bubbling up above the water, and investigated a relatively fresh burrow in the middle of the field. The trail then wandered near and across the creek (a few times!) in a nicely maintained trail, spotting butterflies, plants, an anole and a little brown skink. At one spot we were checking out the wild ginger/heartleaf plants, looking for the flowers, and found one plant with flowers in various stages of opening – under the soil and in the middle of an ant trail! These plants are pollinated by ants who also aid in seed dispersal, and it was cool to see the ants checking out the flowers.

Further down we found the trail ALMOST impenetrable with downed trees – some with 2-3 foot diameters. Hiking turned into scrambling and ducking under these huge logs. We met up with the stream again and crossed it several times, balancing on more downed trees and clambering over large, sometimes sharp and slippery, rocks. I think most of us did not expect an obstacle course! Sharp-lobed hepatica were blooming, almost cheering us on. Lichens and liverworts abounded and American walking fern made an appearance. Most SCANners made the short climb up to Lee Falls to see its cascades before turning around and heading back through the labyrinth to the regular trail to the cars.

*Lee Morris, President*

### THIS MONTH: Carolina Sandhills NWR

For March, SCAN is heading to Chesterfield County to visit the [Carolina Sandhills National Wildlife Refuge](#). For 2026, SCAN is making a concerted effort to retrace our steps through some of the locations visited in past field trips during our first two years as an organization (1976-77), in celebration of our 50th anniversary. Although we've been to the Refuge 5 times over the last five decades, most recently in 2022, we've only ever been there in fall. So this will be SCAN's first spring trip to Carolina Sandhills NWR.

This month's SCAN outing is in partnership with the Carolina Butterfly Society (CBS), who will have members joining us from both SC and NC. CBS members will be targeting some rare elfin species, and other scarcely seen spring butterflies, at the Refuge. But also, CBS will also be coming back on Sunday to survey Cheraw State Park and Sandhills State Forest. If you're interested in tagging along for this bonus Sunday trip with CBS, then please see the details below from Caroline.

*Tom Austin, Database Manager & Southern Regional Director*

## **NEXT MONTH: Forty Acre Rock Heritage Preserve**

For April, SCAN will be heading to [Forty Acre Rock Heritage Preserve](#) in Lancaster County, SC. Forty Acre Rock, although not quite a 40-acre rock, is a large granitic outcropping that hosts myriad rare plants, tremendous views, and good hiking trails for SCAN to explore. If we're lucky, the Elf Orpines will still be in bloom along the ephemeral depressional wetlands atop the rock.

*Tom Austin, Database Manager & Southern Regional Director*

---

## **SPECIAL EVENT: Francis Beidler Forest BioBlitz**

On Saturday April 11th 2026, Audubon South Carolina will be hosting their second BioBlitz at [Francis Beidler Forest](#) in Dorchester County, SC. Audubon staff would love for any SCAN Members who can make it to come and assist with the day's BioBlitz any time throughout the day.

Beidler Forest is located at: 336 Sanctuary Road, Harleyville, SC 29448. For more details about the BioBlitz, please Contact Ryan Watson, with Audubon, at: [ryan.watson@audubon.org](mailto:ryan.watson@audubon.org)

*Tom Austin, Database Manager & Southern Regional Director*

---

## **ANNUAL MEETING SUMMARY: from March 3, 2026 Zoom Meeting**

On Tuesday March 3, 2026 SCAN held its annual business meeting via Zoom. We elected officers for 2026, debated the need for a minor dues increase in the future, discussed details of this July's 50th Anniversary Gala, showed off a new logo for 2026, ruminated on plans for the upcoming 4th and 5th decade books, and had a grand old time catching up with everyone!

### Elected Officers for 2026:

*President* – Lee Morris

*Vice President* – Scott Wietecha

*Secretary* – Kim McManus

*Treasurer* – Kate Hartley

*Historian* – Gordon Murphy

*Database Manager* – Tom Austin

*Northern Regional Director* – Todd Johnston

*Western Regional Director* – Ron Ahle

*Central Regional Directors* – Dave and Marty Kastner

*Southern Regional Director* – Tom Austin

*Eastern Regional Director* – Carolina Eastman

### Dues Increase Effective 2027:

By vote of the board and membership, dues will be raised to \$15 for individual memberships starting the first of 2027. This modest dues increase was needed to help cover the inflating costs of website hosting, venue rental fees for the annual meeting, and periodic publishing costs. We also now have introduced multi-year categories for memberships including 2-year, 3-year, and lifetime memberships. The lifetime membership is calculated as 15 years of dues, minus a 10% discount. And don't forget, please renew your membership for 2026 if you have not already!

### Save the Date 50th Anniversary Gala:

Save the date for Saturday, July 25th for the SCAN 50th Anniversary Gala at the SC State Museum! This will be held on the typical SCAN date of the 4th Saturday of the month. The Gala will be a celebration of SCAN, Rudy Mancke, and all the members who have made SCAN the great organization that it is. The Gala will be an afternoon and evening affair, so there is not specific trip offered that day. However, rambling along the Riverwalk in Columbia (where the Saluda and Broad Rivers converge to become the Congaree River) is encouraged. The Riverwalk is a great birding site and a beautiful green area of Columbia.

The Gala will feature keynote speaker Josh Arrants, socializing, and a dinner. We are working on securing access to the museum's exhibits (including the Wings over South Carolina exhibit) during the Gala, and hopefully even a behind-the-scenes tour. There will be 50th Anniversary SWAG as well!!! Please plan to attend, and please reach out to other SCAN members, past and present, to encourage them to attend as well. The Gala is open to anyone and everyone associated with SCAN.

To celebrate the 50th Anniversary of SCAN, we designed a new logo specifically for the occasion. So stay tuned for news on commemorative SCAN swag!



#### Content Needed for the 4th and 5th SCAN Books:

As you may know, SCAN publishes a book once a decade that contains all of our species lists from the prior ten years. These tomes serve to not only commemorate the passing of yet another decade for SCAN but also are valuable contributions to science, each serving as a distillation and crystallization of our collective efforts through SCAN, as individual members, to document the natural history of South Carolina throughout time. SCAN furnishes copies of these books to local universities and natural history institutions so they may serve as references in the libraries for future research, and provides access to members as desired.

To date, SCAN has published 3 books. Yet, this year marks the end of our 5th decade. That means we're a decade late on our 4th book and now due for our 5th. We're now finally making good progress on compiling book 4 and hope to have that fully drafted before the year is out. But we need *your* help to put the finishing touches on book 4 and to make book 5 something a little more special to mark this monumental anniversary.

For SCAN's Books 4 and 5, we are soliciting members to contribute well-focused, clear photos of flora, fauna, and/or SCANNers SCANNing. We are also looking for members to write short natural history articles (between 300 to 1,200 words, 1-2 pages) on their area of expertise OR impassioned interests.

You do NOT need to be an expert to contribute. If you are seriously interested in a topic (I'm partial to wasps and spiders myself) but are not yet well-versed in it, feel free to research it (record your references!) and write an introduction to the topic. If you can link the topic to Rudy Mancke or the origins of SCAN, we can publish it in the 5th book (celebrating the fiftieth anniversary). Write-ups about sites we have visited would also be of interest – for example, if you want to write about granitic balds like 40 Acre Rock or the cypresses and carnivorous plants at Goodale State Park.

If you are unsure about a topic, please contact Lee Morris or Tom Austin. Even if you're not confident in your authorial skills, that's okay! – editing can be done by the book committee. Fair warning: some of you might be solicited directly by the Book Committee to write something (*you know who you are*), so you may want to volunteer now before you're volun-told! But in all seriousness, **please contribute!** We need your stories, photos, expertise, and passion to make the 5th book something truly special!

### SC Museum Bird Exhibits:

On March 5th, I was invited to a preview of the SC State Museum's new double exhibit: "South Carolina Wings of Wonder" on the South Carolina birds and "BPOTY (Bird Photographer of the Year)" - a gallery of winning photographs of birds from photographers around the world in the biggest Photo Contest.

The Wings of Wonder started with the bird family tree which includes bird-like dinosaurs including replicas of the first "birds". Next was a huge case with about 100 eggs of SC bird species, a study in Nidology (bird nests), then a poignant exhibit about the extinct Carolina Parakeet. Many taxidermized birds stud the rest of the room, showing the majesty of the raptors, the diminutiveness of many songbirds, and examples of common and no-so-common birds. The highlight of the room is a Golden Eagle with upswept wings which probably span 6 feet. A side room plays videos of bird behavior.

At least three separate gallery rooms exhibit the top Bird Photographer of the Year photos in a variety of categories. It was an amazing experience; I didn't even get to view the entire exhibit in the hour we had available. This exhibit will be at the SC State Museum through the end of August. We are holding our 50th Anniversary SCAN Gala on July 25th (Saturday) at the State Museum; the exhibit will still be there and we are hoping to offer it as part of our celebration.

### Presentation by Sharleen Johnson:

Due to the weather post-poning our in-person Annual Meeting, on March 4th Sharleen Johnson gave a Zoom presentation "Pollinating Wasps and Native Plants in Coastal SC" as part of our Online Annual Meeting. It was a great talk introducing wasp pollinators and coastal native plants they like to visit. We're working to get a recording of her talk uploaded to SCAN's YouTube channel soon, so stay tuned for a link. Thank you, Sharleen, for presenting!

*Lee Morris, President*



### Attendees:

Sharon Yomtob, Mandy Johnson, Johannes Stratmann, Claudia Stratmann, Barbara Foster, Scott Wietecha, Angela Valvasori, Ron Ahle, Rita Zollinger, Lee Morris, Gordon Murphy, and Kim McManus  
[Not Pictured:] Nancy Adamson, Ellen Fishburne

Photos from Lee Falls Natural Area



Tadpoles and eggs  
*Kim McManus*



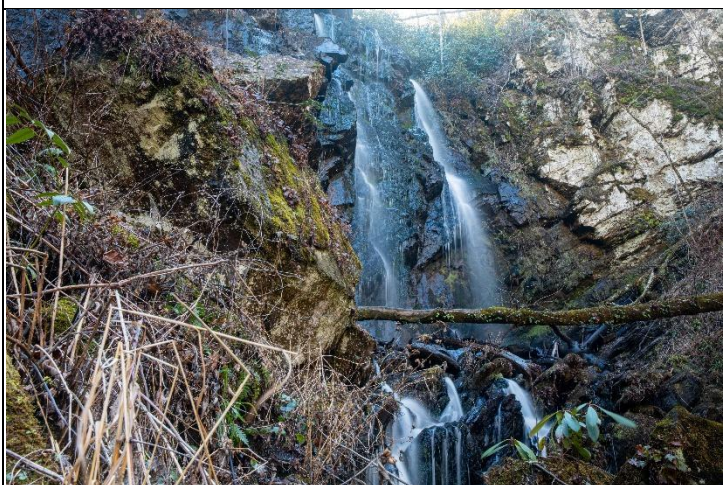
Trillium  
*Kim McManus*



Question Mark Butterfly  
*Kim McManus*



Toad eggs  
*Kim McManus*



Lee Falls  
*Kim McManus*



Grasshopper  
*Kim McManus*



Rita Zollinger navigating the trail  
*Kim McManus*



Kim McManus attempting a crossing  
*Rita Zollinger*



Small white flower  
*Kim McManus*



Violet  
*Kim McManus*



Ron Ahle exploring a stream  
*Kim McManus*



Lee Morris with a crayfish exoskeleton  
*Kim McManus*

# **Carolina Sandhills National Wildlife Refuge**

## **Chesterfield County, SC**

23734 US HWY-1, McBee, SC 29101

GPS COORDINATES: 34.5044, -80.2249

Saturday, March 28, 2026 at 10:30am - 4:30pm

As part of our 50<sup>th</sup> anniversary celebration we are revisiting some of the sites from our first two years as an organization. We first visited Carolina Sandhills National Wildlife Refuge on November 20, 1976 and we are returning there for our March trip this year. We've had several return visits since that first one, but this will be the first spring visit specifically to the refuge. (There was a 1984 February trip that also included Sugarloaf Mountain.)

Previous trip dates: November 1976, December 1981, September 1992, October 2007, and December 2022.

We will meet in the parking lot at the visitor center of Carolina Sandhills NWR. The main entrance is on US Highway 1, about 4 miles northeast of McBee, SC. The address is 23734 U.S. Highway 1, McBee, SC 29101. Coordinates are 34.5044, -80.2249. Restrooms will not be available until later in the day, if at all. There are gas stations in McBee.

This is a joint trip with the Carolina Butterfly Society (CBS). John Demko will take the lead for CBS in looking for elfin butterflies, with a special focus of the endangered Frosted Elfin, and other spring butterflies. Contact John if you are planning to focus on butterflies. There is a lot to see at the refuge in addition to butterflies, so we expect that people will spread out to different locations. CBS will have an additional trip on Sunday to Cheraw State Park and Sand Hills State Forest.

### **Information for the CBS Sunday butterfly trip:**

CBS will convene at 10:30 on Society Hill Road (AKA Teals Mill Rd) in Cheraw State Park. Park on the side of the road just past the Juniper Creek bridge. (GPS coordinates 34.6214, -79.9451) CBS will survey the sand myrtle on both sides of the road. Targets butterflies are Hessel's Hairstreak, Brown Elfin, Henry's Elfin, Eastern Pine Elfin, Holly Azure, and Great Purple Hairstreak. When finished, CBS will drive approximately 25 minutes west to Sand Hills State Forest to explore Horseshoe Mountain. (GPS coordinates 34.5896, -80.1170) The target species here is Brown Elfin. Restrooms may be available near Horseshoe Mountain, but they are sometimes locked. So plan accordingly.

Ron Ahle will lead. Contact him if you are coming.

For overnight stays, there are hotels in Cheraw and camping at Cheraw SP.

### **Background on the [Carolina Sandhills National Wildlife Refuge](#):**

The Carolina Sandhills National Wildlife Refuge was established on March 17, 1939 to: provide habitat for migratory birds, to demonstrate sound management practices that enhance natural resource conservation, and to provide wildlife-oriented recreation opportunities. The Federal government purchased land from willing sellers. Much of the land was eroded from poor farming and forestry practices and supported few populations of wildlife species; initial conservation efforts focused on restoring the barren land.

Located in the Sandhills Physiographic Region of South Carolina, the Carolina Sandhills NWR is one of the Southeast's premier sites for viewing the longleaf pine/wiregrass ecosystem and is comprised of 47,850 acres, including fee ownership of 45,348 acres, and nine conservation easements totaling 2,502 acres. The majority of the refuge lies in Chesterfield County, South Carolina. There is one fee title tract totaling 210 acres in Marlboro County. Numerous small creeks and tributaries, along with thirty man-made lakes and ponds and 1,200 acres of fields, support a diversity of habitats for wildlife.

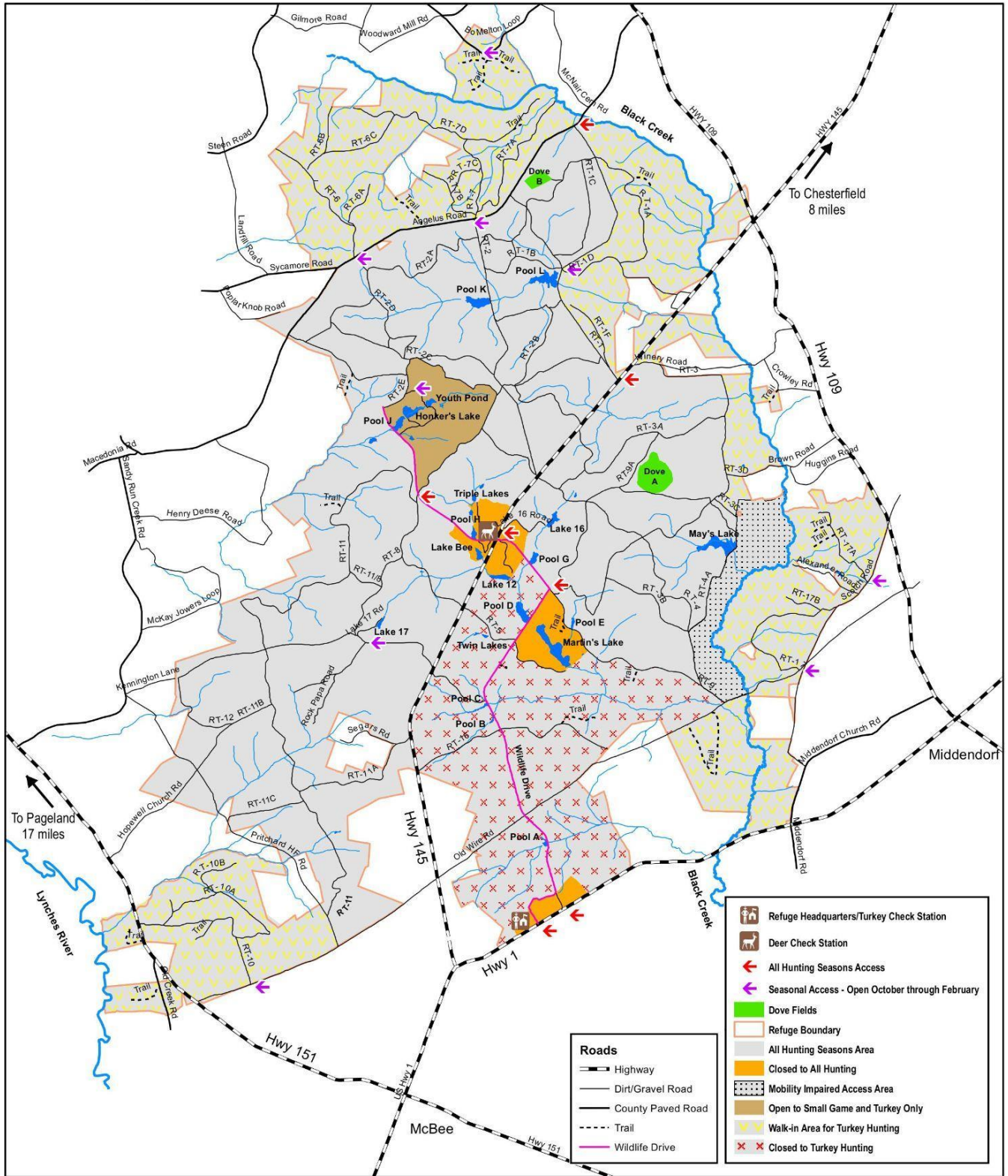
Along with rolling sand hills, the refuge is home to streamside pocosins (translated “swamp on a hill”), open fields, hardwood ridges, wetlands and open water ponds. This mosaic of habitats provides for the needs of more than 190 species of birds, 42 species of mammals, 41 species of reptiles, and 25 species of amphibians. More than 1,000 species of plants have been identified on the refuge, including rare species of pitcher plants, Well’s pixie-moss, and the white-wicky. The refuge supports a secondary recovery population of the red-cockaded woodpecker and numerous species of pine-grassland birds, including Northern bobwhite quail, Bachman’s sparrow, Chuck-will’s-widows, and American Kestrel.

More detailed information about the refuge can be found in their General Brochure:

[CarolinaSandhillsGeneralBrochure2019-508 \(3\).pdf](#)



### General Hunt Map



	Refuge Headquarters/Turkey Check Station
	Deer Check Station
	All Hunting Seasons Access
	Seasonal Access - Open October through February
	Dove Fields
	Refuge Boundary
	All Hunting Seasons Area
	Closed to All Hunting
	Mobility Impaired Access Area
	Open to Small Game and Turkey Only
	Walk-in Area for Turkey Hunting
	Closed to Turkey Hunting

**Roads**

- Highway
- Dirt/Gravel Road
- County Paved Road
- Trail
- Wildlife Drive

Produced at Carolina Sandhills NWR  
Updated June 2023



The USF&WS makes no warranty for use of this map and cannot be held liable for actions or decisions based on map content. This map is intended to show General Hunting Access on CSNWR.

Lee Falls Natural Area  
Oconee Co., SC  
February 28, 2026

This list was produced by SCAN from sightings produced by SCAN members and is subject to revision as needed. An asterisk (\*) indicates a new sighting for SCAN. Send any changes or corrections to Tom Austin at [scnaturalists76@gmail.com](mailto:scnaturalists76@gmail.com). Please indicate exactly to which flora/fauna list you are referring to in the subject line of your message. Thank you.

LICHENS

**Beard Lichen**

*Usnea sp.*

**Powdered Fringe Lichen**

*Heterodermia speciosa*

**Smokey-eyed Boulder Lichen**

*Porpidia albocaerulescens*

FLORA

**Salamander Algae**

*Oophila amblystomatis*

**Dumortier's Liverwort**

*Dumortiera hirsuta*

**Snakeskin Liverwort**

*Conocephalum salebrosum*

**Smoothcap Moss**

*Atrichum sp.*

**Platyhypnidium Moss**

*Rhynchostegium riparioides*

**Pinched Shaggy Moss**

*Loeskeobryum brevirostre*

**Brocade Moss**

*Callicladium imponens*

**Common Thelia**

*Thelia hirtella*

**Bryum Moss**

*Bryum sp.*

**Fern Moss**

*Thuidium delicatulum*

**Worm Moss**

*Bryoandersonia illecebra*

**Shining Clubmoss**

*Huperzia lucidula*

**Common Running-cedar**

*Diphasiastrum digitatum*

**Cut-leaf Grapefern**

*Sceptridium dissectum*

**Walking Fern**

*Asplenium rhizophyllum*

**Fancy Fern**

*Dryopteris intermedia*

**Marginal Wood-fern**

*Dryopteris marginalis*

**Christmas Fern**

*Polystichum acrostichoides*

**Resurrection Fern**

*Pleopeltis michauxiana*

**Common Rockcap Fern**

*Polypodium virginianum*

**Eastern White Pine**

*Pinus strobus*

**Eastern Hemlock**

*Tsuga canadensis*

**Variable-leaf Heartleaf**

*Hexastylis heterophylla*

**Little Heartleaf**

*Hexastylis minor*

**Sweet Betsy**

*Trillium cuneatum*

**Yellow Trillium**

*Trillium luteum*

**Trillium**

*Trillium sp.*

**Downy Rattlesnake-orchid**

*Goodyera pubescens*

**Crane-fly Orchid**

*Tipularia discolor*

**Rush**

*Juncus sp.*

**Plantainleaf Sedge**

*Carex plantaginea*

**Annual Bluegrass**

*Poa annua*

**Sharp-lobed Hepatica**

*Hepatica acutiloba*

**Round-lobed Hepatica**

*Hepatica americana*

**Hooked Buttercup**

*Ranunculus recurvatus*

**American Alumroot**

*Heuchera americana*

**Foamflower**

*Tiarella cordifolia*

**Virginia-creeper**

*Parthenocissus quinquefolia*

**Southern Agrimony**

*Agrimonia parviflora*

**White Avens**

*Geum canadense*

**Mock Strawberry**

*Potentilla indica*

**American Beech**

*Fagus grandifolia*

**Tag Alder**

*Alnus serrulata*

**Hearts-a-burstin'-with-love**

*Euonymus americanus*

**Dwarf St.-John's-wort**

*Hypericum mutilum*

**Halberd-leaf Violet**

*Viola hastata*

**Wood Violet**

*Viola hirsutula*

**Common Blue Violet**

*Viola sororia*

**Carolina Crane's-bill**

*Geranium carolinianum*

**Wild Geranium**

*Geranium maculatum*

**Bitter Dock**

*Rumex obtusifolius*

**Cutleaf Toothwort**

*Cardamine concatenata*

**Hairy Bittercress**

*Cardamine hirsuta*

**Pipsissewa**

*Chimaphila maculata*

**Mountain Laurel**

*Kalmia latifolia*

**Mountain Doghobble**

*Leucothoe fontanesiana*

**White Rosebay**

*Rhododendron maximum*

**Fernleaf Phacelia**

*Phacelia bipinnatifida*

**Phacelia**

*Phacelia sp.*

**Weeping Forsythia**

*Forsythia suspensa*

**Bird's-eye Speedwell**

*Veronica persica*

**Red Dead-nettle**

*Lamium purpureum*

**Lyreleaf Sage**

*Salvia lyrata*

**Daisy Fleabane**

*Erigeron sp.*

**Appalachian Ragwort**

*Packera anomyma*

**Grass-leaved Golden-aster**

*Pityopsis sp.*

**American Aster**

*Symphotrichum sp.*

**Cocklebur**

*Xanthium strumarium*

**Common Elderberry***Sambucus canadensis***Devil's-walking-stick***Aralia spinosa***Queen-Anne's-lace***Daucus carota***Bland Sweet Cicely***Osmorhiza claytonii***Hypoxylon Canker***Hypoxylon sp.***Orange Jelly***Dacrymyces chrysospermus***Turkey-tail***Trametes versicolor***Latte Bracket***Trametes lactinea***Trametes***Trametes sp.***Resinous Polypore***Ischnoderma resinosum***Common Split Gill***Schizophyllum commune***Scrambled-egg Slime***Fuligo septica***Bark Whitewash***Phlyctis boliviensis*

## FAUNA

**Stink Bug***Meneclis insertus***Large Water-strider***Gerris remigis***Hemlock Woolly Adelgid***Adelges tsugae***Slender Smoothtail\****Epistrophella emarginata***Tropical Plushback\****Palpada furcata***Large Cranefly***Tipulidae sp.***Spring Azure***Celastrina ladon***American Snout***Libytheana carinenta***Eastern Comma***Polygonia comma***Spotted Salamander***Ambystoma maculatum***Seal Salamander***Desmognathus monticola***Green Anole***Anolis carolinensis***Turkey Vulture***Cathartes aura***Red-bellied Woodpecker***Melanerpes carolinus***Red-headed Woodpecker***Melanerpes erythrocephalus***Downy Woodpecker***Dryobates pubescens***Yellow-bellied Sapsucker***Sphyrapicus varius***Pileated Woodpecker***Dryocopus pileatus***American Crow***Corvus brachyrhynchos***Tufted Titmouse***Baeolophus bicolor***Carolina Chickadee***Poecile carolinensis***White-breasted Nuthatch***Sitta carolinensis***Carolina Wren***Thryothorus ludovicianus***Golden-crowned Kinglet***Regulus satrapa***Song Sparrow***Melospiza melodia*