



SOUTH CAROLINA ASSOCIATION OF NATURALISTS

SCAN

PO Box 24911

Columbia, SC 29224

www.scnaturalists.org

November 2025

LAST MONTH: Santee National Wildlife Refuge – Cuddo Unit

Last month's trip to the Santee National Wildlife Refuge – Cuddo Unit in Clarendon County - started off on a beautiful fall day. There was the normal snooping around and meeting and greeting pre-outing time. Regional Director Dave Kastner kicked off the introductions and site briefing. Then Ron Ahle, having been there very recently, gave a brief overview of where to go and what we might see. After a spirited discussion about the possible presence of painting buntings, the group started off. While the butterfly people stopped at fields at the side of the road, the rest of the group started wandering trails in the Black Bottom Lake region. Few birds were seen, but there were plenty of flora and insect fauna for most of us. Small dragonflies including the Blue-faced Meadowhawk, *Sympetrum ambiguum*, and the Little blue Dragonlet, *Erythrodiplax minuscula* flitted around with butterflies, including a goodly number of Sleepy Oranges (*Eurema nicippe*). The surprise of the day was just off the trail near the road: a Northern Grass Mantis (Brunner's mantis, *Brunneria borealis*) waving her half-eaten grasshopper at us. Many photos were taken of her! This mantis is special – there are no known males, and females reproduce parthenogenetically. We noticed that the yellow and orange stripe along the dorsal side of her abdomen camouflaged her perfectly with the green grass edges with brown that she was found on.

We then moved to a parking area for lunch which had an added benefit of a field full of late-blooming flowers and multitudes of pollinators. Many of us spent time in that field chasing after long-tailed skippers (*Urbanus proteus*) and other butterflies, mating Ornate Bella moths (*Utetheisa ornatrix*), grasshoppers (including a nice Red-legged Grasshopper, *Melanoplus femurrubrum*) and other insects. Despite there being plenty of goldenrods, only one Green Lynx Spider (*Peucetia viridans*) with tiny babies was observed.

SCANners investigated other trails in the Unit, with one SCANner having issues with cypress knees, before returning to the field and heading out for the day. Three intrepid souls braved coming darkness in the vicinity of Alligator Alley, looking for a picturesque view (with trees in the water!) to capture the sun setting. Beautiful scenes were memorialized in photos (albeit without the sun) and the last "sighting" of the day, the low sound of a Great Horned Owl (*Bubo virginianus*) was heard faintly, rewarding us for a full day of fun.

Lee Morris, President

THIS MONTH: Meggett County Park

For November, SCAN is flowing down to the North Edisto River to visit Meggett County Park in Charleston County. Meggett County Park is nearly 500 acres in size and an easy hike on wide trails in the flat sea island landscape. What it lacks in topography it makes up for with a wide array of coastal habitats and native flora quietly nestled along the salt marshes of Toogoodoo Creek. It's a great place to search for both fungi and fall birds!

Tom Austin, Database Manager & Southern Regional Director

NEXT MONTH: Barnwell State Park

The December trip always sneaks up on us, so make a note now that we'll be exploring [Barnwell State Park](#) in Barnwell County on December 13th. Remember to bring your [Ultimate Outsider Official Guide](#) and collect a stamp!

Kim McManus, Secretary and Web Keeper



October Attendees: Kim McManus, Glenn Quattlebaum, Mandy Johnson, Breanna Blue, Johannes Stratmann, Samantha McCann, Ron Ahle, Lee Morris, Claudia Stratmann, Edward Ingram, Dave Kastner, Marty Kastner, Sharon Yomtob, Nancy Adamson, Bill Twomey, Dave Shuetrum

Photos from Santee NWR – Cuddo Unit



Green Lynx Spider (*Peucetia viridans*)
Kim McManus



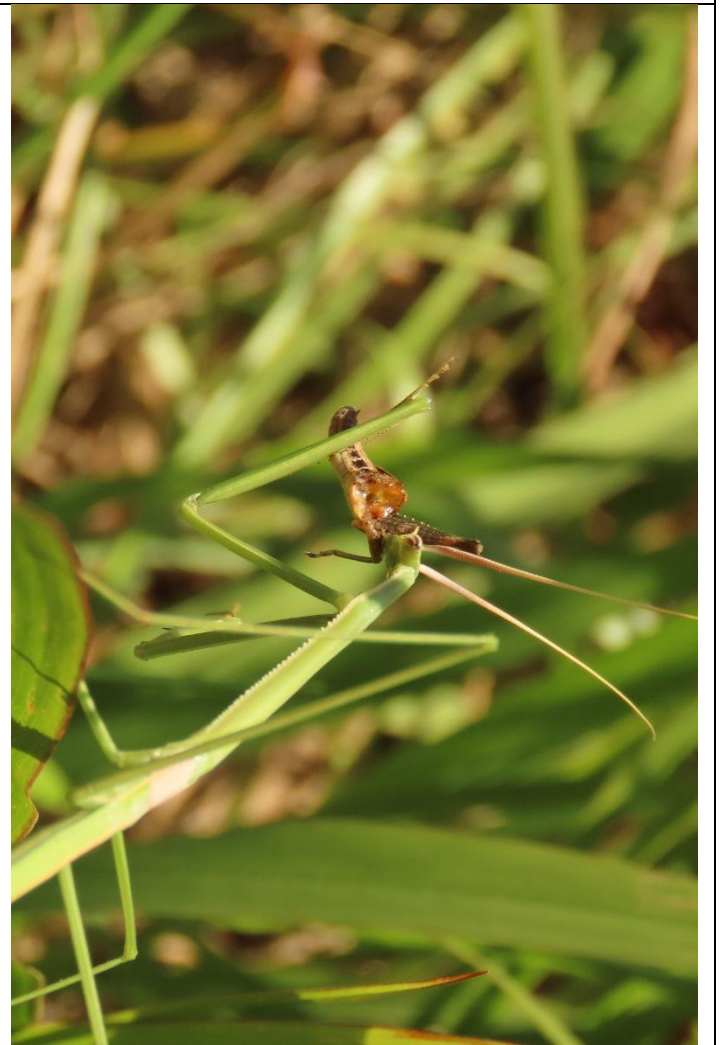
Blue-faced Meadowhawk (*Sympetrum ambiguum*)
Kim McManus



Ornate Bella Moth (*Utetheisa ornatrix*)
Kim McManus



Sunset over Lake Marion
Kim McManus



Northern Grass Mantis (*Brunneria borealis*)
Lee Morris

MEGETT COUNTY PARK
CHARLESTON COUNTY, SC
7247 Ethel Post Office Rd, Meggett, SC
32.6877, -80.2744
November 22nd, 2025 at 10:30am

[Meggett County Park](#) is a 475-acre passive nature park located in Meggett, SC on the western side of Charleston County. The property is owned and managed by the Charleston County Parks & Recreation Commission. It was purchased with funding from the first Charleston County Transportation Sales Tax, which set aside a special funding allocation for CCPRC to directly acquire lands for future County Parks. The property has roughly 5-miles of trails and offers opportunities for hiking, biking, horseback riding, and wildlife watching to visitors. Trails are road width, vegetated or dirt, and easy walking. Elevation change across the property is minimal, less than 15ft.

There are no restrooms on site. The closest public restrooms are 4 miles away at [St. Paul's Hollywood Library](#) located at 5130 HWY-165, Hollywood, SC. **Park admission is \$1**, payable at a self-service drop box by the main kiosk. (*Free for Charleston County Parks Gold Pass members.*) The parking lot is fairly small and it is recommended we park in the front spaces, so as to allow for any horse trailers who may arrive to utilize the overflow space in the rear of the parking area. Horses of course have right-of-way on all trails. No-see-ums and marsh mosquitos can be aggressive here at times, especially in nice weather. So bring your preferred bug juice to be safe.

Meggett County Park provides a good cross-section of interior sea island habitats. The property grades from the peak of a high sand ridge along Ethel Post Office Road down to the bank of an unnamed tributary of Toogoodoo Creek. Along the trail loop the property transitions from natural stands of dry mixed pine-oak forest on its north end, down to a wetter swale of mixed hardwoods, old fields and planted pine in its interior, and eventually to a surprisingly diverse floodplain bank, maritime fringe forest, hammock islands, salt scrub, sand flats, high marsh, low marsh, and mud flats along its southern bounds. It hosts a great array of native plant life considering the intensive multi-century agriculture in the area. There should be plenty of opportunities this time of year for mushroom musing, birdwatching, and wide-open views of the marshes of Toogoodoo Creek.

DIRECTIONS (*From I-26*)

- Turn right off I-26 onto I-526 towards Savannah.
- Drive for 6.7mi to the end of I-526, then turn right onto HWY-7, then in ~500ft turn right at its end onto US-17.
- Drive for 7.5mi, then turn left onto HWY-162 at the light.
- Drive for 6.7mi, then turn left onto HWY-165 at the light.
- Drive for 1.3mi, then turn with a slight left onto Wilson Rd.
- Drive for 1.5mi, then turn right at the stop sign onto Ethel Post Office Road.
- Drive 1.4mi and the park entrance will be on your left.
- Parking in the front parking lot.

After our regularly scheduled soodle, we'll be heading over to [Roxbury Mercantile](#) for a group dinner. Roxbury Mercantile is located at **4398 HWY-174, Meggett, SC**, about 15min and 10mi away.

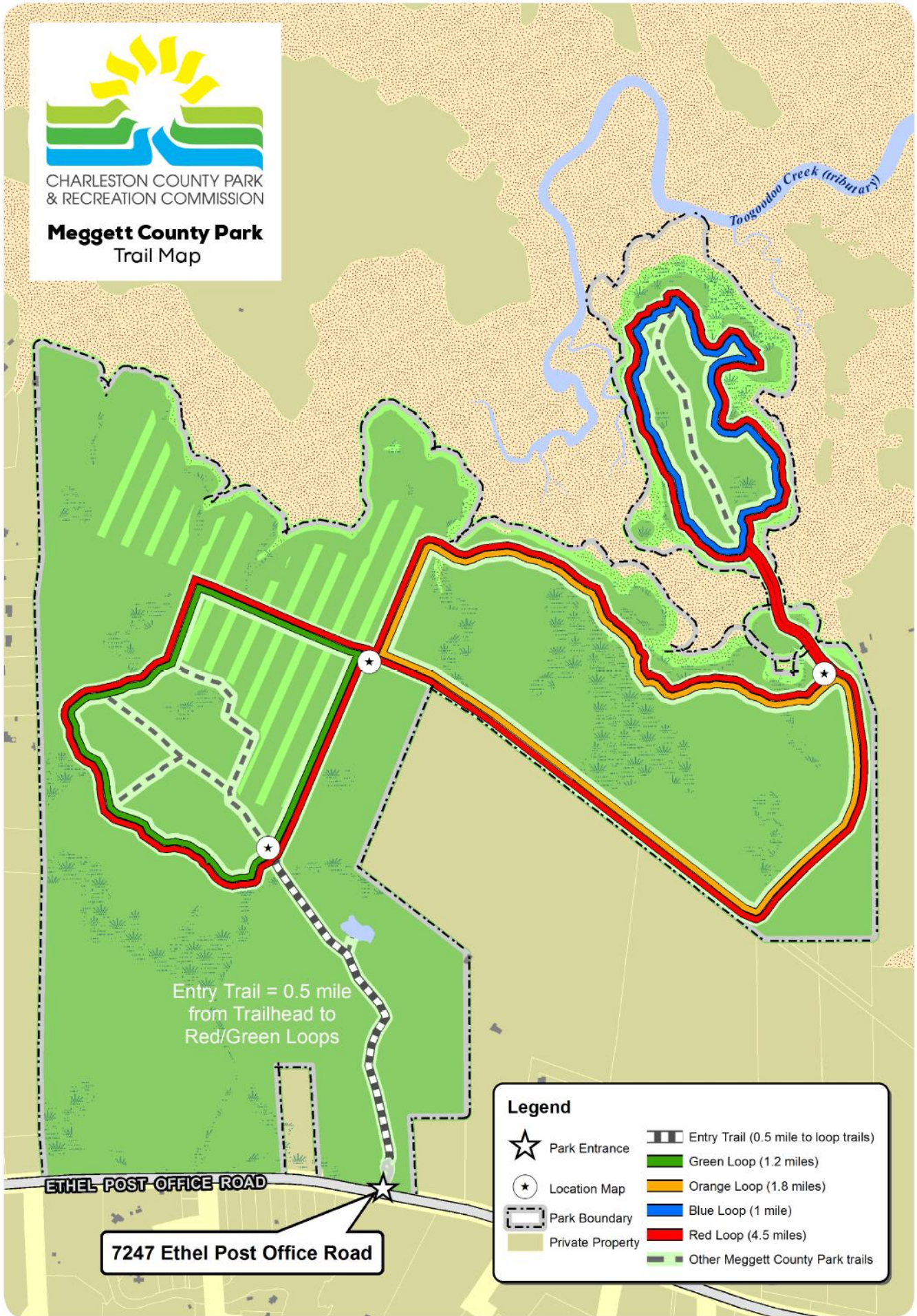
If you have any questions or need assistance finding the site day of, please reach out to:

Tom Austin, *Southern Regional Director* | Cell: **(843) 330-2610** | Email: TomAustin.Pro@gmail.com



CHARLESTON COUNTY PARK
& RECREATION COMMISSION

Meggett County Park Trail Map



Entry Trail = 0.5 mile
from Trailhead to
Red/Green Loops

ETHEL POST OFFICE ROAD

7247 Ethel Post Office Road

Legend

- ☆ Park Entrance
- ⊛ Location Map
- ▭ Park Boundary
- Private Property
- ▨ Entry Trail (0.5 mile to loop trails)
- Green Loop (1.2 miles)
- Orange Loop (1.8 miles)
- Blue Loop (1 mile)
- Red Loop (4.5 miles)
- ▨ Other Meggett County Park trails

Draper WMA
York Co., SC
September 27, 2025

This list was produced by SCAN from sightings produced by SCAN members and is subject to revision as needed. An asterisk (*) indicates a new sighting for SCAN. Send any changes or corrections to Tom Austin at scnaturalists76@gmail.com. Please indicate exactly to which flora/fauna list you are referring to in the subject line of your message. Thank you.

LICHENS

Perforated Ruffle Lichen

Parmotrema perforatum

Bushy Beard Lichen

Usnea strigosa

FLORA

Cut-leaf Grapefern

Sceptridium dissectum

Ebony Spleenwort

Asplenium platyneuron

Christmas Fern

Polystichum acrostichoides

Shortleaf Pine

Pinus echinata

Loblolly Pine

Pinus taeda

Virginia Pine

Pinus virginiana

Eastern Red Cedar

Juniperus virginiana

Tulip-tree

Liriodendron tulipifera

Common Wild Yam

Dioscorea villosa

Sawtooth Greenbrier

Smilax bona-nox

Whiteleaf Greenbrier

Smilax glauca

Common Greenbrier

Smilax rotundifolia

Solomon's-seal

Polygonatum biflorum

Common Dayflower

Commelina communis

Marsh Dewflower

Murdannia keisak

Fragrant Flatsedge

Cyperus odoratus

Umbrella Sedge

Cyperus sp.

Nutrush

Scleria sp.

Old-field Broomstraw

Andropogon virginicus

Switch Cane

Arundinaria tecta

Common Woodreed

Cinna arundinacea

Bermuda Grass

Cynodon dactylon

Hairy Rosette-Grass

Dichanthelium acuminatum

Witchgrass

Dichanthelium dichotomum

Open-flower Witchgrass

Dichanthelium laxiflorum

Tropical Finger-Grass

Digitaria ciliaris

Jungle-rice

Echinochloa colona

Purple Lovegrass

Eragrostis spectabilis

Centipede Grass

Eremochloa ophiuroides

Japanese Stilt-grass

Microstegium vimineum

Nimblewill

Muhlenbergia schreberi

Switchgrass

Panicum virgatum

Dallis Grass

Paspalum dilatatum

Giant Plume Grass

Saccharum giganteum

Little Bluestem

Schizachyrium scoparium

Yellow Foxtail

Setaria pumila

Yellow Indiangrass

Sorghastrum nutans

Redtop

Tridens flavus

Coralbeads

Nephroia carolina

Sycamore

Platanus occidentalis

Sweet Gum

Liquidambar styraciflua

Muscadine

Vitis rotundifolia

Virginia-creeper

Parthenocissus quinquefolia

Eastern Redbud

Cercis canadensis

Partridge Pea

Chamaecrista fasciculata

Sensitive Partridge Pea

Chamaecrista nictitans

Velvetleaf Ticktrefoil

Desmodium viridiflorum

Tick-trefoil

Desmodium sp.

Honey Locust

Gleditsia triacanthos

Japanese-clover

Kummerowia striata

Bicolor Lespedeza

Lespedeza bicolor

Sericea Lespedeza

Lespedeza cuneata

Sicklepod

Senna obtusifolia

Low Hop Clover

Trifolium dubium

White Clover

Trifolium repens

Running Five-fingers

Potentilla canadensis

Mock Strawberry

Potentilla indica

Black Cherry

Prunus serotina

Hog Plum

Prunus umbellata

Multiflora Rose

Rosa multiflora

Southern Blackberry

Rubus argutus

Sand Blackberry

Rubus cuneifolius

Winged Elm

Ulmus alata

Slippery Elm

Ulmus rubra

Southern Hackberry

Celtis laevigata

White Mulberry

Morus alba

Red Mulberry

Morus rubra

False-nettle

Boehmeria cylindrica

Chinese Chestnut

Castanea mollissima

Common Chinquapin

Castanea pumila

Sawtooth Oak	<i>Quercus acutissima</i>	Arrowleaf Sida	<i>Sida rhombifolia</i>	Downy Lobelia	<i>Lobelia puberula</i>
White Oak	<i>Quercus alba</i>	Prickly Sida	<i>Sida spinosa</i>	Common Ragweed	<i>Ambrosia artemisiifolia</i>
Scarlet Oak	<i>Quercus coccinea</i>	Jumpseed	<i>Persicaria virginiana</i>	Silverling	<i>Baccharis halimifolia</i>
Southern Red Oak	<i>Quercus falcata</i>	Smartweed	<i>Persicaria sp.</i>	Beggar-ticks	<i>Bidens sp.</i>
Sand Laurel Oak	<i>Quercus hemisphaerica</i>	Common Pokeweed	<i>Phytolacca americana</i>	Spotted Knapweed	<i>Centaurea stoebe</i>
Bluejack Oak	<i>Quercus incana</i>	Blackgum	<i>Nyssa sylvatica</i>	Mistflower	<i>Nocturnum coelestinum</i>
Swamp Chestnut Oak	<i>Quercus michauxii</i>	Flowering Dogwood	<i>Cornus florida</i>	Leafy Elephant's-foot	<i>Elephantopus carolinianus</i>
Water Oak	<i>Quercus nigra</i>	American Persimmon	<i>Diospyros virginiana</i>	Common Elephant's-foot	<i>Elephantopus tomentosus</i>
Cherrybark Oak	<i>Quercus pagoda</i>	Pipsissewa	<i>Chimaphila maculata</i>	Fireweed	<i>Erechtites hieraciifolius</i>
Willow Oak	<i>Quercus phellos</i>	Sparkleberry	<i>Vaccinium arboreum</i>	Common Horseweed	<i>Erigeron canadensis</i>
Post Oak	<i>Quercus stellata</i>	Longleaf Bluet	<i>Houstonia longifolia</i>	White-bracted Thoroughwort	<i>Eupatorium album</i>
Pignut Hickory	<i>Carya glabra</i>	Carolina Jessamine	<i>Gelsemium sempervirens</i>	Common Dog-fennel	<i>Eupatorium capillifolium</i>
Mockernut Hickory	<i>Carya tomentosa</i>	Indian-hemp	<i>Apocynum cannabinum</i>	Late Eupatorium	<i>Eupatorium serotinum</i>
Black Walnut	<i>Juglans nigra</i>	Anglepod	<i>Gonolobus suberosus</i>	Narrowleaf Purple Cudweed	<i>Gamochaeta calviceps</i>
American Hornbeam	<i>Carpinus caroliniana</i>	Ivyleaf Morning-glory	<i>Ipomoea hederacea</i>	Bitterweed	<i>Helenium amarum</i>
Creeping Cucumber	<i>Melothria pendula</i>	Carolina Horsesnail	<i>Solanum carolinense</i>	Woodland Sunflower	<i>Helianthus divaricatus</i>
Hearts-a-burstin'	<i>Euonymus americanus</i>	White Ash	<i>Fraxinus americana</i>	Spotted Cat's-ear	<i>Hypochaeris radicata</i>
St. Andrew's Cross	<i>Hypericum hypericoides</i>	Chinese Privet	<i>Ligustrum sinense</i>	Appalachian Ragwort	<i>Packera anonyma</i>
Common Blue Violet	<i>Viola sororia</i>	Carolina Wild-petunia	<i>Ruellia caroliniensis</i>	Fragrant Rabbit-tobacco	<i>Pseudognaphalium obtusifolium</i>
Black Willow	<i>Salix nigra</i>	Cross-vine	<i>Bignonia capreolata</i>	Tall Goldenrod	<i>Solidago altissima</i>
Rhombic Copperleaf	<i>Acalypha rhomboidea</i>	Trumpet-creeper	<i>Campsis radicans</i>	Axillary Goldenrod	<i>Solidago caesia caesia</i>
Eastern Flowering Spurge	<i>Euphorbia corollata</i>	Brazilian Vervain	<i>Verbena brasiliensis</i>	Long-stalked Aster	<i>Symphotrichum dumosum</i>
Milk-purslane	<i>Euphorbia maculata</i>	Bugleweed	<i>Lycopus sp.</i>	Frost Aster	<i>Symphotrichum pilosum</i>
Alternate-leaved Seedbox	<i>Ludwigia alternifolia</i>	Self-heal	<i>Prunella vulgaris</i>	Cocklebur	<i>Xanthium strumarium</i>
Water-willow	<i>Ludwigia leptocarpa</i>	Narrowleaf Skullcap	<i>Scutellaria integrifolia</i>	Asiatic Hawk's-beard	<i>Youngia japonica</i>
Winged Sumac	<i>Rhus copallinum</i>	Slenderleaf Agalinis	<i>Agalinis tenuifolia</i>	Lion's-foot	<i>Nabalus serpentarius</i>
Poison-Ivy	<i>Toxicodendron radicans</i>	Georgia Holly	<i>Ilex longipes</i>	Southern Black Haw	<i>Viburnum rufidulum</i>
Red Maple	<i>Acer rubrum</i>	American Holly	<i>Ilex opaca</i>	Japanese Honeysuckle	<i>Lonicera japonica</i>
Flower-of-an-Hour	<i>Hibiscus trionum</i>	Cardinal Flower	<i>Lobelia cardinalis</i>	Queen-Anne's-lace	<i>Daucus carota</i>

Sanicle
Sanicula canadensis

Amanita
Amanita sp.

FAUNA

Greenhouse Millipede
Oxidus gracilis

Yellow Garden Spider
Argiope aurantia

Hentz Orbweaver
Neoscona crucifera

Marbled Orbweaver
Araneus marmoreus

Triangulate Orbweaver
Verrucosa arenata

Long-jawed Orbweaver
Tetragnatha sp.

Grass Spider
Agelenopsis sp.

Six-spotted Fishing Spider
Dolomedes triton

Orange-winged Grasshopper
Pardalophora phoenicoptera

Carolina Locust
Dissosteira carolina

Spur-throated Grasshopper
Melanoplus sp.

American Bird Grasshopper
Schistocerca americana

Agile Meadow Katydid
Orchelimum agile

Chinese Mantis
Tenodera sinensis

Brown Stink Bug
Euschistus sp.

Common Eastern Velvet-ant
Dasymutilla occidentalis

Scoliid Wasp
Scolia dubia

Eastern Yellowjacket
Vespula maculifrons

Spider Wasp
Psorthaspis brimleyi

Digger Wasp
Sphex sp.

Leaf-cutting Bee
Megachile sp.

Eastern Carpenter Bee
Xylocopa virginica

Bumblebee
Bombus impatiens

Western Honey Bee
Apis mellifera

Hornworm Parasitoid Wasp
Cotesia congregata

Phantom Crane-fly
Bittacomorpha clavipes

Goldenrod Ball Gall
Eurosta solidaginis

Green June Beetle
Cotinis nitida

Black Blister Beetle
Epicauta pensylvanica

Eastern Tiger Swallowtail
Papilio glaucus

Clouded Sulphur
Colias philodice

Cloudless Sulphur
Phoebis sennae

Sleepy Orange
Abaeis nicippe

Little Yellow
Pyrisitia lisa

Eastern Tailed-blue
Cupido comyntas

Variiegated Fritillary
Euptoieta claudia

Pearl Crescent
Phyciodes tharos

Question Mark
Polytonia interrogationis

Common Buckeye
Junonia coenia

Red-spotted Purple
Limenitis arthemis astyanax

Gemmed Satyr
Cyllopsis gemma

Carolina Satyr
Hermeuptychia sosybius

Monarch
Danaus plexippus

Least Skipper
Ancyloxypha numitor

Fiery Skipper
Hylephila phyleus

Ocola Skipper
Panoquina ocola

White Checkered-Skipper
Burnsius albescens

Large Lace-border Moth
Scopula limboundata

Banded Sphinx Moth
Eumorpha fasciatus

Walnut Caterpillar Moth
Datana integerrima

Fall Webworm Moth
Hyphantria cunea

Tiger Moth
Apantesis sp.

Banded Tussock Moth
Halysidota tessellaris

Tobacco Budworm Moth
Chloridea virescens

Fowler's Toad
Anaxyrus fowleri

Northern Cricket Frog
Acris crepitans

Green Anole
Anolis carolinensis

Common Five-lined Skink
Plestiodon fasciatus

Ground Skink
Scincella lateralis

Green Heron
Butorides virescens

Great Blue Heron
Ardea herodias

Turkey Vulture
Cathartes aura

Red-tailed Hawk
Buteo jamaicensis

Osprey
Pandion haliaetus

Barred Owl
Strix varia

Red-bellied Woodpecker
Melanerpes carolinus

Northern Flicker
Colaptes auratus

Downy Woodpecker
Dryobates pubescens

Pileated Woodpecker
Dryocopus pileatus

Hairy Woodpecker
Leuconotopicus villosus

Eastern Phoebe
Sayornis phoebe

Blue Jay
Cyanocitta cristata

American Crow
Corvus brachyrhynchos

Tufted Titmouse
Baeolophus bicolor

Carolina Chickadee
Poecile carolinensis

White-breasted Nuthatch
Sitta carolinensis

Carolina Wren
Thryothorus ludovicianus

Loggerhead Shrike
Lanius ludovicianus

Yellow-throated Vireo
Vireo flavifrons

Palm Warbler
Setophaga palmarum

Northern Cardinal
Cardinalis cardinalis

Eastern Towhee
Pipilo erythrophthalmus

Chipping Sparrow
Spizella passerina

Scarlet Tanager
Piranga olivacea

American Goldfinch
Spinus tristis

White-tailed Deer
Odocoileus virginianus

Santee Nat. Wildlife Refuge, Cuddo Unit
Clarendon Co., SC
October 25, 2025

This list was produced by SCAN from sightings produced by SCAN members and is subject to revision as needed. An asterisk (*) indicates a new sighting for SCAN. Send any changes or corrections to Tom Austin at scnaturalists76@gmail.com. Please indicate exactly to which flora/fauna list you are referring to in the subject line of your message. Thank you.

FLORA

Water Spangles

Salvinia minima

Water Spangles

Salvinia molesta

Ebony Spleenwort

Asplenium platyneuron

Kunth's Maiden Fern

Pelazoneuron kunthii

Shortleaf Pine

Pinus echinata

Longleaf Pine

Pinus palustris

Loblolly Pine

Pinus taeda

Eastern Red Cedar

Juniperus virginiana

Bald-cypress

Taxodium distichum

Creeping Burhead

Echinodorus cordifolius

Arrowhead

Sagittaria australis

Jackson-brier

Smilax smallii

Greenbrier

Smilax sp.

False Garlic

Nothoscordum bivalve

Water Hyacinth

Piaropus crassipes

Woolly Bulrush

Scirpus cyperinus

Common Bushy Bluestem

Andropogon glomeratus

Longleaf Spikegrass

Chasmanthium sessiliflorum

Perennial Foxtail-grass

Setaria parviflora

Eastern Gamagrass

Tripsacum dactyloides

Yellow Lotus

Nelumbo lutea

Sweet Gum

Liquidambar styraciflua

Parrot-feather

Myriophyllum aquaticum

Virginia-creeper

Parthenocissus quinquefolia

Peppervine

Nekemias arborea

Black Locust

Robinia pseudoacacia

Sicklepod

Senna obtusifolia

Sesban

Sesbania herbacea

Hawthorn

Crataegus sp.

River Birch

Betula nigra

Swamp Cottonwood

Populus heterophylla

Popcorn Tree

Triadica sebifera

Colombian Waxweed

Cuphea carthagenensis

Floating Primrose-willow

Ludwigia peploides

Winged Sumac

Rhus copallinum

Poison-Ivy

Toxicodendron radicans

Red Maple

Acer rubrum

Arrowleaf Sida

Sida rhombifolia

Water Tupelo

Nyssa aquatica

American Persimmon

Diospyros virginiana

Buttonbush

Cephalanthus occidentalis

Anglepod

Gonolobus suberosus

Common Jacquemontia

Jacquemontia tamnifolia

Beautyberry

Callicarpa americana

Common Agalinis

Agalinis purpurea

Possum-haw

Ilex decidua

Yaupon

Ilex vomitoria

Silverling

Baccharis halimifolia

Showy Bur-marigold

Bidens laevis

Climbing Hempweed

Mikania scandens

Grass-leaved Golden-aster

Pityopsis graminifolia

Leavenworth's Goldenrod

Solidago leavenworthii

Small White Aster

Symphotrichum racemosum

American Aster

Symphotrichum sp.

Shelf Fungus

Ganoderma sp.

Many Warts

Amanita polypyraxis

Frost's Bolete

Exsudoporus frostii

FAUNA

Long-jawed Orbweaver

Tetragnatha sp.

Mabel Orchard Orbweaver

Leucauge argyrobapta

Eastern Harvestman

Leiobunum vittatum

Red-legged Grasshopper

Melanoplus femurrubrum

Stink Bug

Mormidea lugens

Leaf-footed Bug

Leptoglossus sp.

Cuckoo Wasp

Chrysis smaragdula

Fraternal Potter Wasp

Eumenes fraternus

Southern Yellowjacket

Vespula squamosa

Stinging Wasp

Euodynerus megaera

Thread-waisted Sand Wasp

Ammophila pictipennis

Thread-waisted Wasp

Ammophila nigricans

Thread-waisted Wasp

Ammophila sp.

Drone Fly

Eristalis dimidiata

Tachinid Fly

Winthemia sp.

Picture-winged Fly	<i>Chaetopsis massyla</i>	Ocola Skipper	<i>Panoquina ocola</i>	Wild Turkey	<i>Meleagris gallopavo</i>
Eastern Pondhawk	<i>Erythemis simplicicollis</i>	Southern Skipperling	<i>Oarisma minima</i>	Mourning Dove	<i>Zenaida macroura</i>
Little Blue Dragonlet	<i>Erythrodiplax minuscula</i>	White Checkered-Skipper	<i>Burnsius albescens</i>	Barred Owl	<i>Strix varia</i>
Blue Dasher	<i>Pachydiplax longipennis</i>	Tropical Checkered-Skipper	<i>Burnsius oileus</i>	Belted Kingfisher	<i>Megaceryle alcyon</i>
Wandering Glider	<i>Pantala flavescens</i>	Southern Flannel Moth	<i>Megalopyge opercularis</i>	Red-bellied Woodpecker	<i>Melanerpes carolinus</i>
Blue-faced Meadowhawk	<i>Sympetrum ambiguum</i>	Polyphemus Moth	<i>Antheraea polyphemus</i>	Red-headed Woodpecker	<i>Melanerpes erythrocephalus</i>
Soldier Beetle	<i>Chauliognathus pensylvanicus</i>	Ornate Bella Moth	<i>Utetheisa ornatrix</i>	Northern Flicker	<i>Colaptes auratus</i>
Cloudless Sulphur	<i>Phoebis sennae</i>	Orange Holomelina Moth	<i>Virbia aurantiaca</i>	Downy Woodpecker	<i>Dryobates pubescens</i>
Sleepy Orange	<i>Abaeis nicippe</i>	Southern Cricket Frog	<i>Acris gryllus</i>	Yellow-bellied Sapsucker	<i>Sphyrapicus varius</i>
Little Yellow	<i>Pyrisitia lisa</i>	Green Treefrog	<i>Hyla cinerea</i>	Pileated Woodpecker	<i>Dryocopus pileatus</i>
Red-banded Hairstreak	<i>Calycopis cecrops</i>	American Alligator	<i>Alligator mississippiensis</i>	Eastern Phoebe	<i>Sayornis phoebe</i>
Gray Hairstreak	<i>Strymon melinus</i>	Eastern Musk Turtle	<i>Sternotherus odoratus</i>	Tree Swallow	<i>Tachycineta bicolor</i>
Eastern Tailed-blue	<i>Cupido comyntas</i>	Green Anole	<i>Anolis carolinensis</i>	Blue Jay	<i>Cyanocitta cristata</i>
Gulf Fritillary	<i>Dione vanillae</i>	Pied-billed Grebe	<i>Podilymbus podiceps</i>	American Crow	<i>Corvus brachyrhynchos</i>
Variiegated Fritillary	<i>Euptoieta claudia</i>	Anhinga	<i>Anhinga anhinga</i>	Tufted Titmouse	<i>Baeolophus bicolor</i>
Pearl Crescent	<i>Phyciodes tharos</i>	Double-crested Cormorant	<i>Nannopterum auritum</i>	Carolina Chickadee	<i>Poecile carolinensis</i>
Question Mark	<i>Polygonia interrogationis</i>	Great Blue Heron	<i>Ardea herodias</i>	White-breasted Nuthatch	<i>Sitta carolinensis</i>
American Lady	<i>Vanessa virginiensis</i>	Great Egret	<i>Ardea alba</i>	Winter Wren	<i>Troglodytes hiemalis</i>
Common Buckeye	<i>Junonia coenia</i>	White Ibis	<i>Eudocimus albus</i>	Carolina Wren	<i>Thryothorus ludovicianus</i>
Red-spotted Purple	<i>Limenitis arthemis astyanax</i>	Common Gallinule	<i>Gallinula galeata</i>	Marsh Wren	<i>Cistothorus palustris</i>
Viceroy	<i>Limenitis archippus</i>	American Coot	<i>Fulica americana</i>	Ruby-crowned Kinglet	<i>Corthylio calendula</i>
Long-tailed Skipper	<i>Urbanus proteus</i>	Laughing Gull	<i>Leucophaeus atricilla</i>	Golden-crowned Kinglet	<i>Regulus satrapa</i>
Horace's Duskywing	<i>Erynnis horatius</i>	Caspian Tern	<i>Hydroprogne caspia</i>	Blue-gray Gnatcatcher	<i>Polioptila caerulea</i>
Zarucco Duskywing	<i>Erynnis zarucco</i>	Turkey Vulture	<i>Cathartes aura</i>	Eastern Bluebird	<i>Sialia sialis</i>
Clouded Skipper	<i>Lerema accius</i>	Black Vulture	<i>Coragyps atratus</i>	Hermit Thrush	<i>Catharus guttatus</i>
Fiery Skipper	<i>Hylephila phyleus</i>	Bald Eagle	<i>Haliaeetus leucocephalus</i>	American Robin	<i>Turdus migratorius</i>
Whirlabout	<i>Polites vibex</i>	Northern Harrier	<i>Circus hudsonius</i>	Yellow-rumped Warbler	<i>Setophaga coronata</i>
Broad-winged Skipper	<i>Poanes viator</i>	Red-shouldered Hawk	<i>Buteo lineatus</i>	Pine Warbler	<i>Setophaga pinus</i>
Eufala Skipper	<i>Lerodea eufala</i>	Red-tailed Hawk	<i>Buteo jamaicensis</i>	Common Yellowthroat	<i>Geothlypis trichas</i>

Northern Cardinal

Cardinalis cardinalis

Eastern Towhee

Pipilo erythrophthalmus

Song Sparrow

Melospiza melodia

Chipping Sparrow

Spizella passerina

White-throated Sparrow

Zonotrichia albicollis

Swamp Sparrow

Melospiza georgiana

Eastern Meadowlark

Sturnella magna

Red-winged Blackbird

Agelaius phoeniceus

Common Grackle

Quiscalus quiscula

White-tailed Deer

Odocoileus virginianus