



SOUTH CAROLINA ASSOCIATION OF NATURALISTS

SCAN

PO Box 24911
Columbia, SC 29224
www.scnaturalists.org

July 2025

Howdy Folks!

Time for the midyear/July newsletter!

Thanks to everyone who turned out at Fishing Creek Place in York County! And a super thanks to the Lazenbys for allowing us to visit and explore at virtually the last minute! Fishing Creek Place is an amazing property with tracts of forest, creeks, wetlands, a beaver pond, and fields, some of which are slowly being restored to prairie. A couple of us intrepid explorers (Kim, Lee and Nancy) braved the bugs (very few!) and skunks (at least one!) and camped at a lovely cove with a PortoLoo nearby (really!) for conveniences. We would like to report that night biodiversity of (the nice) insects and spiders was quite high. Highlights included a Carolina Leaf-roller Cricket (*Camptonotus carolinensis*), a Black-shouldered Spinyleg Dragonfly (*Dromogomphus spinosus*), and various spiders that tried to evade our cameras.

Saturday morning after introductions, Andrew Lazenby first escorted the group to a unique area of the property – Fishing Creek Place Cemetery. The Lazenbys bought the land to preserve via a conservation easement. After discovery that the enslaved persons cemetery was actually much bigger than originally thought, they have worked hard to restore and preserve it. Andrew explained the known history, the restoration process, and the search for living descents of the families. Boxes of artifacts found on the property graced the picnic table nearby.

Afterwards, SCANners did their split-and-wander thing. The birds were plentiful and some actually made a showing. I personally was happy to see a Yellow-billed Cuckoo (*Coccyzus americanus*) bopping about a field near the house. Pollinators were bountiful, with the most popular being a Juniper Hairstreak (*Callophrys gryneus*) that hung out in the same field as the cuckoo for several hours. Snowberry Clearwing Moths (*Hemaris diffinis*), Band-winged Bee Flies (*Exoprosopa fascipennis*), wasps, native bees, and Lepidoptera visited Rattlesnake Master (*Eryngium yuccafolium*), Wild Bergamot (*Monarda fistulosa*), and thousands of zinnias. A few wanderers made their way a few miles from the Fishing Creek Place to a crossroads with more goodies: a Killdeer (*Charadrius vociferus*) on the nest, Dickcissels (*Spiza americana*), and Scissortailed Flycatchers (*Tyrannus forficatus*).

This month's trip is to the mountains where, hopefully, it will be a bit cooler. Poe Creek State Forest is sandwiched between Keowee Toxaway State Park and other hiking areas in this area of the Blue Ridge. For those who don't feel like climbing too much, the trails near the road and Little Eastatoe Creek will be the best bet, while more adventurous SCANners might want to try the longer trails. Either way, we should find plenty of beauty and biodiversity!

Lee Morris, President



Attendees:

Todd Johnston, Walt Kubilius, Tom Austin, John Demko, Ron Ahle, Julianna Nyikos, Johannes Stratmann, Beth Johnson, Claudia Stratmann, Andrew Lazenby, Joanne Williams, Lee Morris, Bill Wedding, Dave Schuetrum, Marcie Wedding, Philoma Skipper, Caroline Eastman, Stuart Greeter, Kim McManus, Sharon Watson, Sara McAllister, John McAllister, Ian McAllister, Silas McAllister, Kade McAllister, Tyler Lazenby, Nancy Adamson, Sharon Yomtob



Inspecting the plot map



Arrowheads and pottery found onsite



Juniper Hairstreak on Rattlesnake Master (*Tom Austin*)



Black-shouldered Spinyleg Dragonfly (*Kim McManus*)



Carolina Leaf-Roller Cricket (*Kim McManus*)



Snowberry Clearwing on Wild Bergamot (*Tom Austin*)



Swainson's Warbler (*Ron Ahle*)



Eastern Box Turtle (*Tom Austin*)



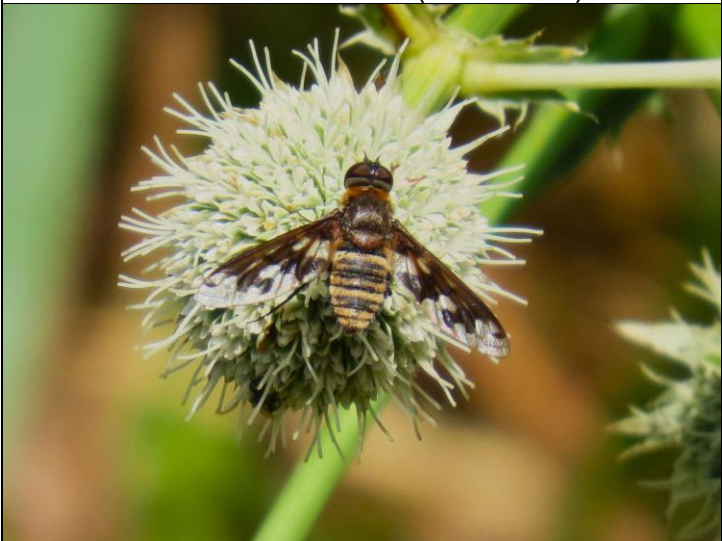
Leopard Slug (*Tom Austin*)



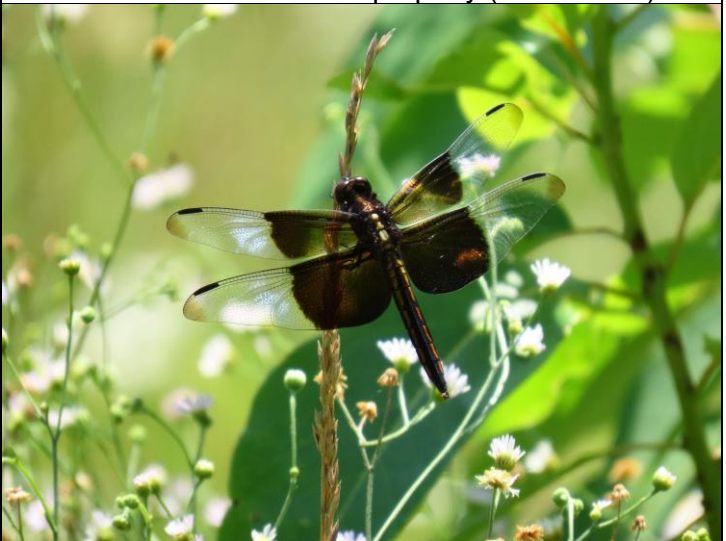
Old brick hearth on the property (*Tom Austin*)



Carolina Horsenettle (*Tom Austin*)



Band-winged Bee Fly (*Ron Ahle*)



Widow Skimmer (*Ron Ahle*)

Poe Creek State Forest

Pickens County, SC

GPS Coordinates: 34.939627, -82.868417

Saturday, July 26, 2025, 10:30 AM to ~4:30 PM

Poe Creek State Forest (PCSF) is a large, forested area adjacent to Keowee-Toxaway State Park in Pickens County, SC. PCSF is located in the southernmost part of the Blue Ridge Mountains, which are a small part of the Appalachian Mountains. Poe Creek State Forest encompasses approximately 2,513 acres. PCSF leans more to the recreational and wildlife management side of things, due to the steep terrain and timber markets in the area. Much of the land base is dominated by 45% hardwood forest, with pine stands comprising 31% of the forest, mixed pine/hardwood stands making up 19%, and the remaining 5% being non forested areas. This mix of forest types provides excellent habitat for many wildlife species, both game and non-game. Threatened and endangered wildlife species and species of concern, including the green salamander, and neo-tropical migratory birds are considered when forest management activities take place. According to the South Carolina Department of Natural Resources (SCDNR) Heritage Preserve data as of 8/23/2022, six G2 species were recognized as occurring in the vicinity of Poe Creek State Forest. including West Virginia White (2008), and Smooth Purple Coneflower (NA), Sun-facing Coneflower/Pineywoods Coneflower (2018). There is an existing population of Mountain Sweet Pitcher Plant (G2) within the boundaries; therefore, Poe Creek State Forest is considered a forest with exceptional conservation values.

Hiking trails are in the form of logging roads. There are many logging roads to choose from, including one that leads to the top of Buzzard's Roost Mountain (elev. 1536 ft). The logging roads feature lush vegetation, good water flow Poe Creek, and wildflowers in bloom. The roads pass through hardwood bottoms, near streams and along pine ridges offering views of a wide variety of wildlife habitats and distinctive piedmont vegetation. The pine ridges are covered with mature pine trees and the hardwood forest communities include mesic oak-hickory forests and hardwood bottoms. Poe Creek is a small stream with primarily bedrock substrate that could contain interesting fish and/or amphibians such as green salamanders. Therefore, this might be a good site for a dip net. It is an excellent area for odonates. Abundant vegetation along logging roads provides opportunities to see a wide variety of insects and spiders.

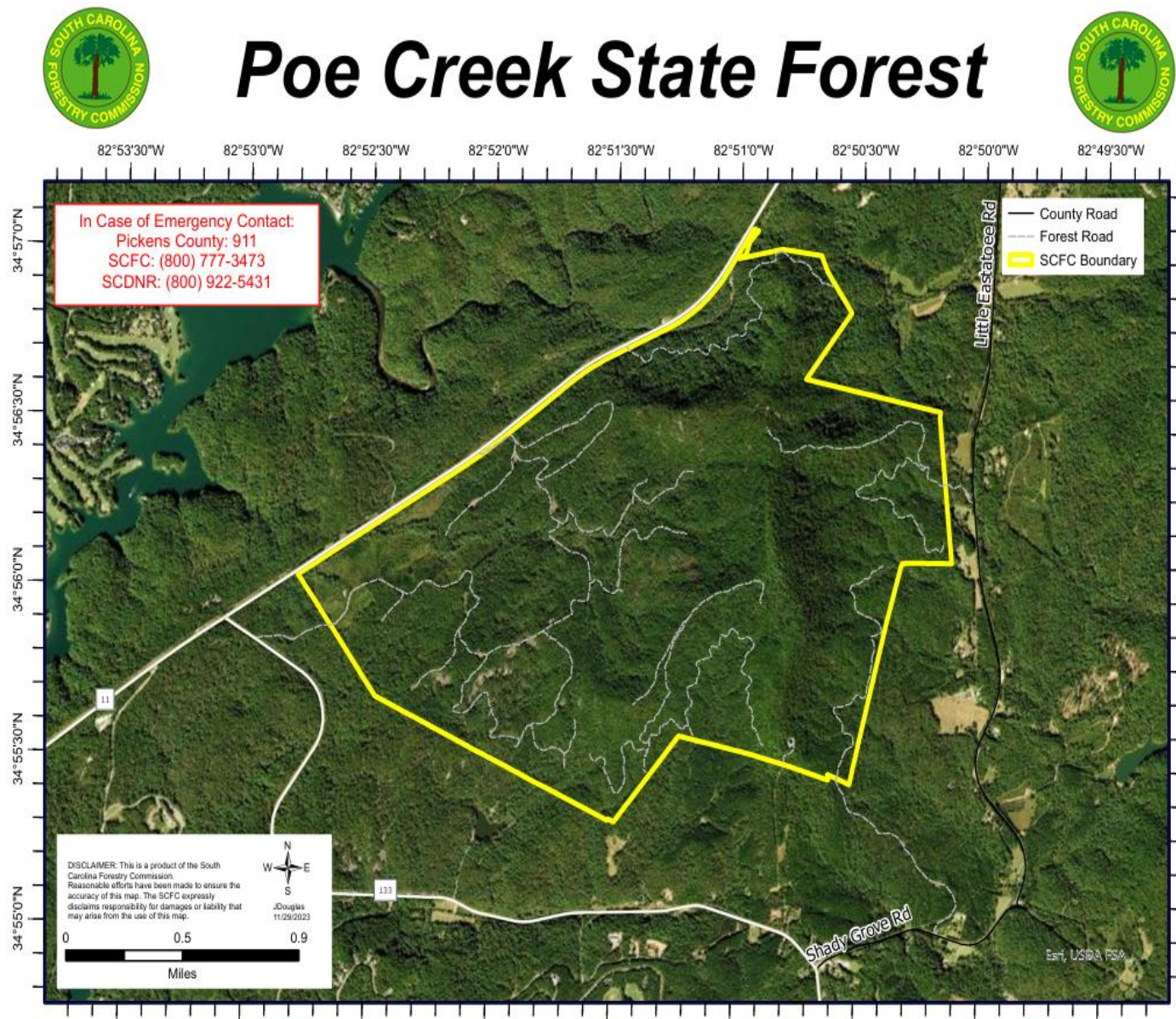
In total, there are approximately 10 miles of logging roads on the property. The roads have no markings, so it is important to have photos of the maps included in this announcement on your phone so you will not get lost. It will be hot so bring plenty of water with you on your hike.

There are other recreation opportunities in the area for wildlife and plant viewing including Keowee-Toxaway SP, Devil's Fork State Park, Table Rock SP and Jocassee Gorges. Camping, although likely booked up, may be available at the State Parks. There are additional hiking options that are very close to our site visit location (refer to Map 3). The highest rated trail in the area is the Eastatoe Passage Trail (Palmetto Trail) with great views of Eastatoe Creek. Highlights of the Eastatoe Passage include well-maintained paths, enjoyable bridges, and beautiful scenery. This trail can be accessed at the Roy F. Jones Fishing Access Area (indicated on Map 3). The Eastatoe Ridge Nature Preserve is also nearby and known for its biodiversity, including rare plant species. And finally, there is Long Shoals Rec Area, which can be viewed prior to arriving at the meeting location. Later in the day, the rec area will likely be crowded, and parking could be an issue. If you plan to extend your trip to two or more days and prefer not to camp, you may be able to find accommodation in Greenville, Seneca, Clemson or Easley.

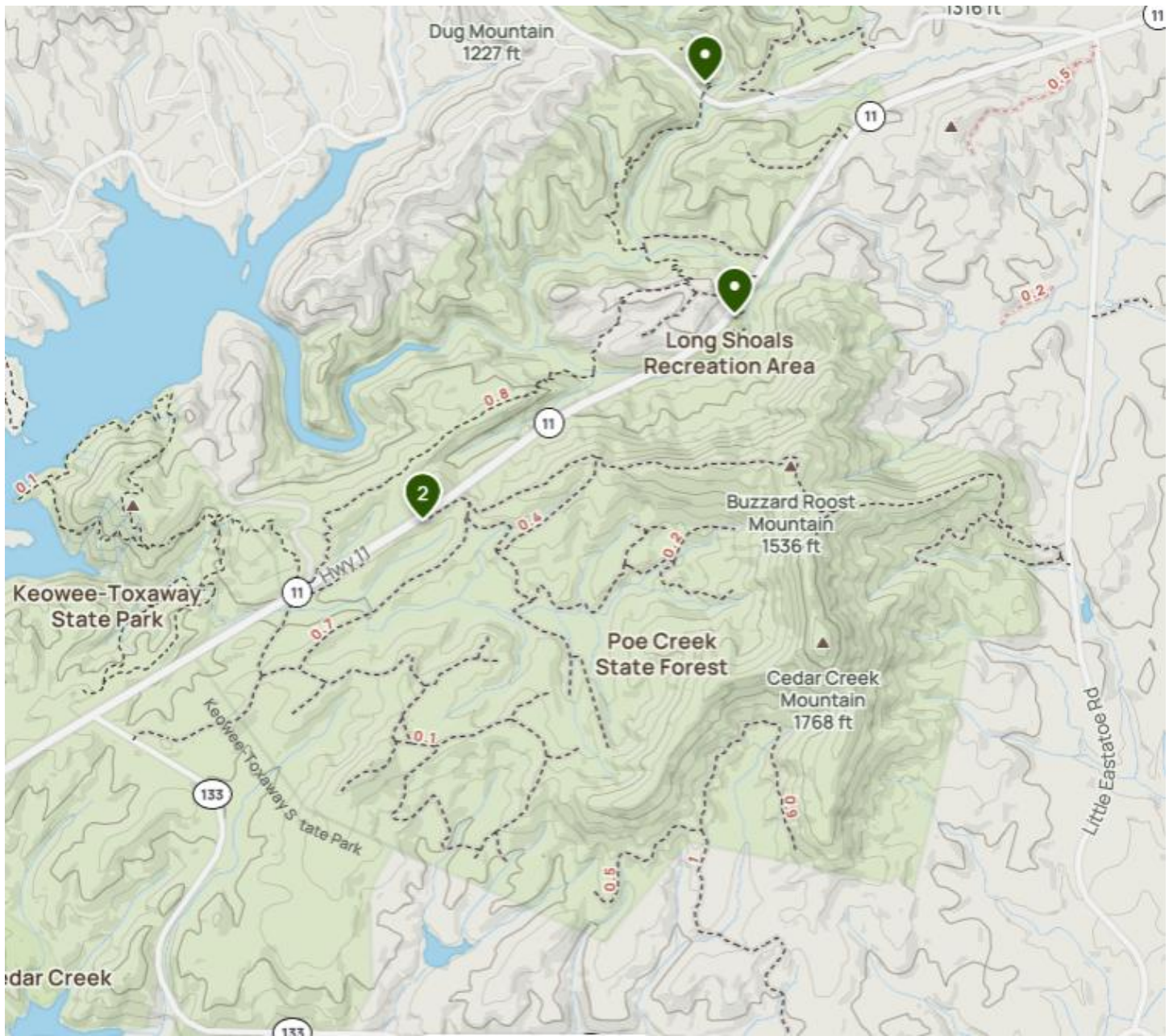
~Ron Ahle

DIRECTIONS:

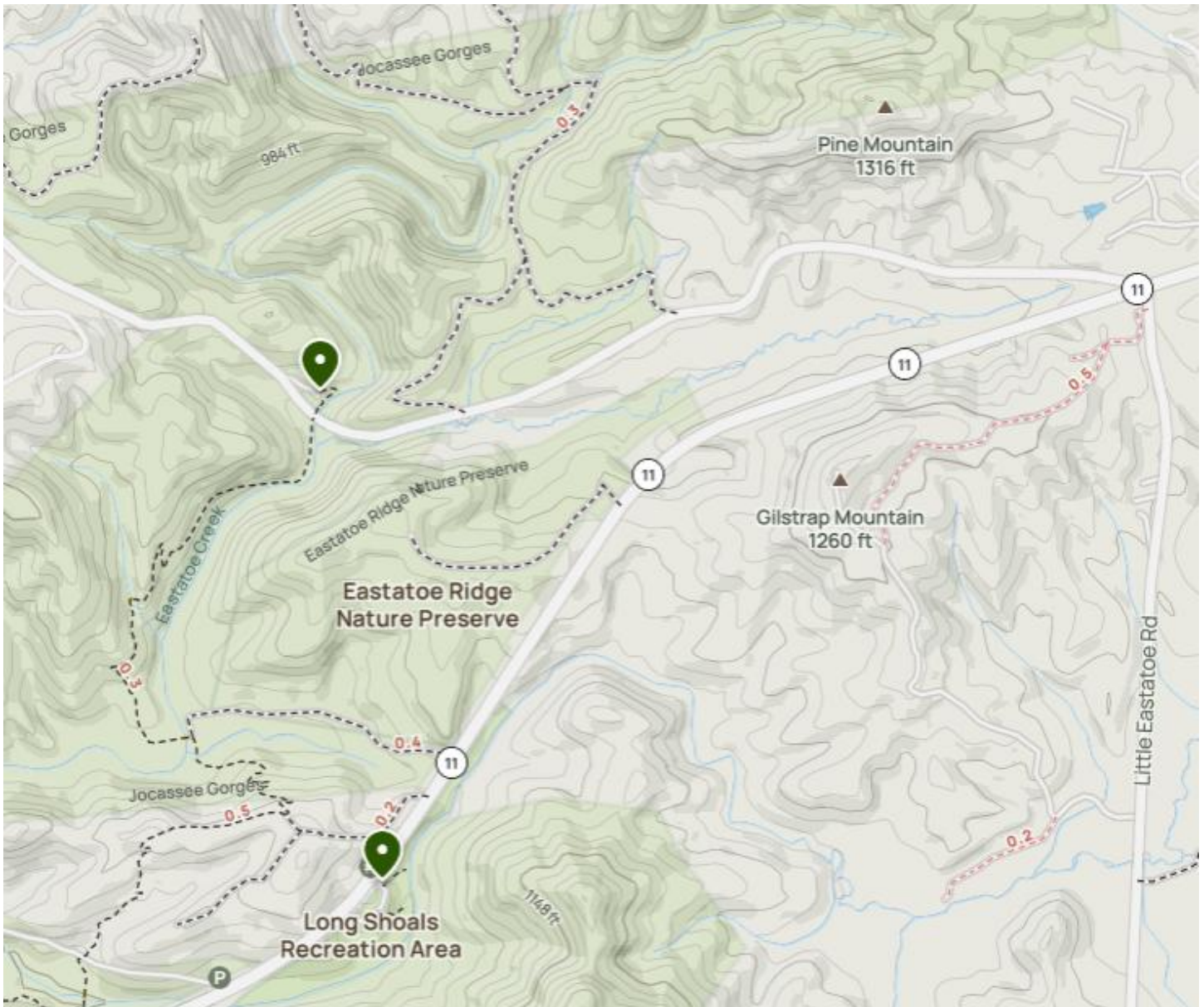
The meeting location is located on the south side of Hwy 11, about halfway between the Long Shoals Rec Area and Keowee-Toxaway SP. There are no signs, only a mailbox that marks the location. The meeting location is indicated as point number 2 on Map 2. Watch for SCAN folks along the road to find the parking area. There is limited parking available, so carpool if possible. There are no amenities offered at this location; however, bathrooms and water are available at the nearby Keowee-Toxaway SP.



Map 1: Poe Creek State Forest



Map 2: Poe Creek State Forest Trail Map showing meeting Location (Arrow 2)



Map 3: Map showing locations of additional Rec opportunities nearby including the trail head for the Eastatoe Passage Trail, Eastatoe Ridge Nature Preserve and Long Shoals Rec Area



Dusky-winged Hover Fly *Octyptamus fuscipennis* photographed at Poe Creek SF (Photo by Ron Ahle)



Green Anole *Anolis carolinensis* photographed at Poe Creek SF (photo by Ron Ahle)



American lopseed *Phryma leptostachya* photographed at Poe Creek SF (photo by Ron Ahle)



Long Shoals (photo by Ron Ahle)



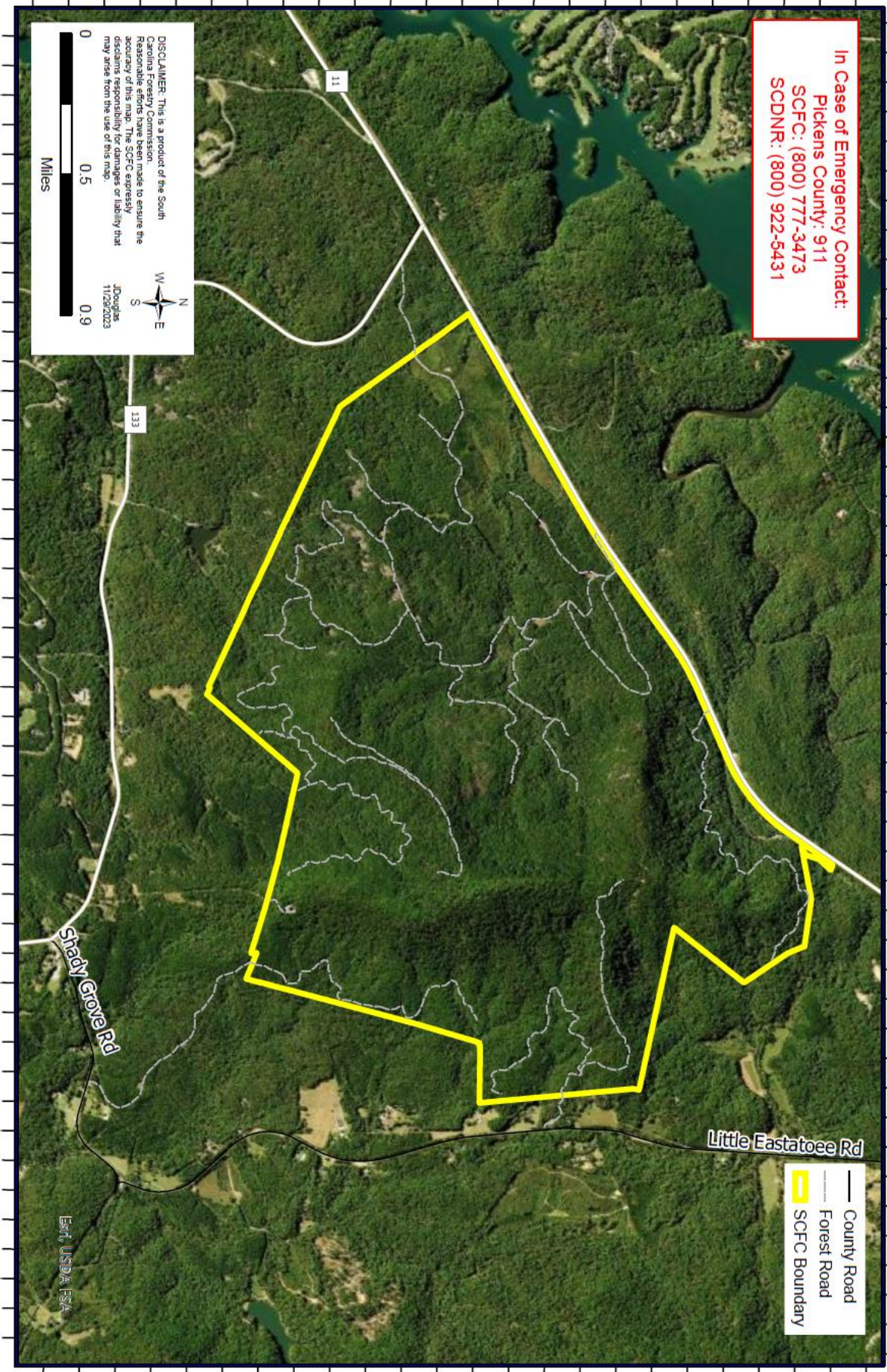
Poe Creek State Forest



In Case of Emergency Contact:
 Pickens County: 911
 SCFC: (800) 777-3473
 SCDNR: (800) 922-5431

34°55'0"N 34°55'30"N 34°56'0"N 34°56'30"N 34°57'0"N

82°53'30"W 82°53'0"W 82°52'30"W 82°52'0"W 82°51'30"W 82°51'0"W 82°50'30"W 82°50'0"W 82°49'30"W



DISCLAIMER: This is a product of the South Carolina Forestry Commission. Reasonable efforts have been made to ensure the accuracy of this map. The SCFC expressly disclaims responsibility for damages or liability that may arise from the use of this map.

JDouglas
11/28/2023

0 0.5 0.9
Miles

W
N
S
E

— County Road
 — Forest Road
 SCFC Boundary

East USDA FSA

Fishing Creek Place (Private)
York Co., SC
June 28, 2025

This list was produced by SCAN from sightings produced by SCAN members and is subject to revision as needed. An asterisk (*) indicates a new sighting for SCAN. Send any changes or corrections to Tom Austin at scnaturalists76@gmail.com. Please indicate exactly to which flora/fauna list you are referring to in the subject line of your message. Thank you.

LICHENS

Parmotrema sp.
Marchandiomyces corallinus

FLORA

Common Running-cedar
Diphasiastrum digitatum

Ebony Spleenwort
Asplenium platyneuron

Netted Chain Fern
Lorinseria areolata

Southern Lady Fern
Athyrium asplenioides

Christmas Fern
Polystichum acrostichoides

Shortleaf Pine
Pinus echinata

Pitch Pine
Pinus rigida

Loblolly Pine
Pinus taeda

Eastern Red Cedar
Juniperus virginiana

Water-shield
Brasenia schreberi

Lizard's-tail
Saururus cernuus

Tulip-tree
Liriodendron tulipifera

Common Pawpaw
Asimina triloba

Spicebush
Lindera benzoin

Jack-in-the-pulpit
Arisaema triphyllum

Green Arrow-arum
Peltandra virginica

Sawtooth Greenbrier
Smilax bona-nox

Whiteleaf Greenbrier
Smilax glauca

Jackson-brier
Smilax smallii

Blue-eyed-grass
Sisyrinchium sp.

Orange Day-lily
Hemerocallis fulva

Field Garlic
Allium vineale

Liriope
Liriope muscari

Virginia Dayflower
Commelina virginica

Toad Rush
Juncus bufonius

Rush
Juncus dichotomus

Fox Sedge
Carex vulpinoidea

Long-fringed Sedge
Carex crinita

Sedge
Carex sp.

Umbrella Sedge
Cyperus sp.

Nutrush
Scleria sp.

Dryland White Bluestem
Andropogon capillipes

Big Bluestem
Andropogon gerardi

Old-field Broomstraw
Andropogon virginicus

Switch Cane
Arundinaria tecta

Brome-grass
Bromus sp.

River Oats
Chasmanthium latifolium

Longleaf Spikegrass
Chasmanthium sessiliflorum

Beaked Panic Grass
Coleataenia anceps

Bermuda Grass
Cynodon dactylon

Variable Witchgrass
Dichanthelium commutatum

Open-flower Witchgrass
Dichanthelium laxiflorum

Velvet Witchgrass
Dichanthelium scoparium

Witchgrass
Dichanthelium sp.

Yard Grass
Eleusine indica

Common Eastern Wild-rye
Elymus virginicus

Tall Fescue
Lolium arundinaceum

Japanese Stilt-grass
Microstegium vimineum

Florida Paspalum
Paspalum floridanum

Vasey Grass
Paspalum urvillei

Common Little Bluestem
Schizachyrium scoparium

Foxtail Grass
Setaria sp.

Johnson Grass
Sorghum halepense

Redtop
Tridens flavus

White Prickly-poppy
Argemone albiflora

Coralbeads
Nephroia carolina

Common Black-cohosh
Actaea racemosa

Sycamore
Platanus occidentalis

Sweet Gum
Liquidambar styraciflua

Muscadine
Vitis rotundifolia

Virginia-creeper
Parthenocissus quinquefolia

Mimosa
Albizia julibrissin

Hog-peanut
Amphicarpaea bracteata

Wild Indigo
Baptisia sp.

Spurred Butterfly Pea
Centrosema virginianum

Eastern Redbud
Cercis canadensis

Common Partridge-pea
Chamaecrista fasciculata

Roundleaf Tick-trefoil	Mockernut Hickory	Elliott's Blueberry
<i>Desmodium rotundifolium</i>	<i>Carya tomentosa</i>	<i>Vaccinium elliotii</i>
Naked Tick-trefoil	Hickory	Large Buttonweed
<i>Hylodesmum nudiflorum</i>	<i>Carya sp.</i>	<i>Diodia virginiana</i>
Sericea Lespedeza	Black Walnut	Blue Field-madder
<i>Lespedeza cuneata</i>	<i>Juglans nigra</i>	<i>Galium sherardia</i>
Kudzu	American Hornbeam	Sweet-scented Bedstraw
<i>Pueraria montana</i>	<i>Carpinus caroliniana</i>	<i>Galium triflorum</i>
Perennial Sand Bean	American Hop-hornbeam	One-flowered Bedstraw
<i>Strophostyles umbellata</i>	<i>Ostrya virginiana</i>	<i>Galium uniflorum</i>
White Clover	Southern Yellow Wood-sorrel	Partridge-berry
<i>Trifolium repens</i>	<i>Oxalis dillenii</i>	<i>Mitchella repens</i>
White Avens	St. Andrew's Cross	Poorjoe
<i>Geum canadense</i>	<i>Hypericum hypericoides</i>	<i>Hexasepalum teres</i>
Running Five-fingers	St.-John's-wort	Indian-hemp
<i>Potentilla canadensis</i>	<i>Hypericum sp.</i>	<i>Apocynum cannabinum</i>
Mock Strawberry	Common Blue Violet	Common Milkweed
<i>Potentilla indica</i>	<i>Viola sororia</i>	<i>Asclepias syriaca</i>
Black Cherry	Rhombic Copperleaf	Butterfly-weed
<i>Prunus serotina</i>	<i>Acalypha rhomboidea</i>	<i>Asclepias tuberosa</i>
Bradford Pear	Eyebane	Eastern Anglepod
<i>Pyrus calleryana</i>	<i>Euphorbia nutans</i>	<i>Gonolobus suberosus</i>
Common Dewberry	Seedbox	Carolina Spinypod
<i>Rubus flagellaris</i>	<i>Ludwigia sp.</i>	<i>Matelea carolinensis</i>
Oriental Silverleaf	Winged Sumac	Greater Periwinkle
<i>Elaeagnus umbellata</i>	<i>Rhus copallinum</i>	<i>Vinca major</i>
Winged Elm	Poison-Ivy	Southern Hound's-tongue
<i>Ulmus alata</i>	<i>Toxicodendron radicans</i>	<i>Andersonglossum virginianum</i>
Slippery Elm	Red Maple	Carolina Ponyfoot
<i>Ulmus rubra</i>	<i>Acer rubrum</i>	<i>Dichondra carolinensis</i>
Red Mulberry	Tree-of-Heaven	Carolina Horsenettle
<i>Morus rubra</i>	<i>Ailanthus altissima</i>	<i>Solanum carolinense</i>
False-nettle	Eastern Rose-mallow	Eastern Black Nightshade
<i>Boehmeria cylindrica</i>	<i>Hibiscus moscheutos</i>	<i>Solanum emulans</i>
American Beech	Smartweed	Fringe-tree
<i>Fagus grandifolia</i>	<i>Persicaria sp.</i>	<i>Chionanthus virginicus</i>
White Oak	Curly Dock	Ash
<i>Quercus alba</i>	<i>Rumex crispus</i>	<i>Fraxinus sp.</i>
Scarlet Oak	Common Pokeweed	Chinese Privet
<i>Quercus coccinea</i>	<i>Phytolacca americana</i>	<i>Ligustrum sinense</i>
Southern Red Oak	Spotted Touch-me-not	Polypremum
<i>Quercus falcata</i>	<i>Impatiens capensis</i>	<i>Polypremum procumbens</i>
Laurel Oak	American Persimmon	Buckhorn Plantain
<i>Quercus laurifolia</i>	<i>Diospyros virginiana</i>	<i>Plantago aristata</i>
Swamp Chestnut Oak	Pipsissewa	English Plantain
<i>Quercus michauxii</i>	<i>Chimaphila maculata</i>	<i>Plantago lanceolata</i>
Water Oak	Sourwood	Great Mullein
<i>Quercus nigra</i>	<i>Oxydendrum arboreum</i>	<i>Verbascum thapsus</i>
Willow Oak	Rhododendron	Carolina Wild-petunia
<i>Quercus phellos</i>	<i>Rhododendron sp.</i>	<i>Ruellia caroliniensis</i>
Bitternut Hickory	Sparkleberry	Cross-vine
<i>Carya cordiformis</i>	<i>Vaccinium arboreum</i>	<i>Bignonia capreolata</i>
Common Shagbark Hickory	Smooth Highbush Blueberry	Trumpet-creeper
<i>Carya ovata</i>	<i>Vaccinium corymbosum</i>	<i>Campsis radicans</i>

Bugleweed	<i>Lycopus sp.</i>	Late Eupatorium	<i>Eupatorium serotinum</i>	Coral Slime	<i>Ceratiomyxa fruticulosa</i>
Bergamot	<i>Monarda fistulosa</i>	Eupatorium	<i>Eupatorium sp.</i>	Slime Mold	<i>Mycetozoa sp.</i>
Self-heal	<i>Prunella vulgaris</i>	Spoonleaf Purple Everlasting	<i>Gamochaeta purpurea</i>	Ringless Honey Mushroom	<i>Desarmillaria caespitosa</i>
Slender Mountain-mint	<i>Pycnanthemum tenuifolium</i>	Bitterweed	<i>Helenium amarum</i>	Flowering Dogwood	<i>Cornus florida</i>
Lyreleaf Sage	<i>Salvia lyrata</i>	Spotted Cat's-ear	<i>Hypochaeris radicata</i>	Sawtooth Blackberry	<i>Rubus argutus</i>
Narrowleaf Skullcap	<i>Scutellaria integrifolia</i>	Oxeye Daisy	<i>Leucanthemum vulgare</i>	Carolina Snailseed	<i>Cocculus carolinus</i>
American Lopseed	<i>Phryma leptostachya</i>	Florist's Gayfeather	<i>Liatris spicata</i>	Tall Fescue	<i>Festuca arundinacea</i>
Princess Tree	<i>Paulownia tomentosa</i>	Appalachian Ragwort	<i>Packera anonyma</i>	Field Madder	<i>Sherardia arvensis</i>
American Holly	<i>Ilex opaca</i>	Fragrant Rabbit-tobacco	<i>Pseudognaphalium obtusifolium</i>	Netted Chainfern	<i>Woodwardia areolata</i>
Yaupon	<i>Ilex vomitoria</i>	False-dandelion	<i>Pyrrhopappus carolinianus</i>	White Prickly Poppy	<i>Argemone albiflora</i>
Lobelia	<i>Lobelia sp.</i>	Black-eyed Susan	<i>Rudbeckia hirta</i>	Partridge Pea	<i>Chamaecrista fasciculata</i>
Common Ragweed	<i>Ambrosia artemisiifolia</i>	Tall Goldenrod	<i>Solidago altissima</i>	Plains Coreopsis	<i>Coreopsis tinctoria</i>
Pale Indian-plantain	<i>Arnoglossum atriplicifolium</i>	Goldenrod	<i>Solidago sp.</i>	Queen Anne's lace	<i>Daucus carota</i>
Silverling	<i>Baccharis halimifolia</i>	American Aster	<i>Symphyotrichum sp.</i>	Anglepod	<i>Gonolobus suberosus</i>
Spanish Needles	<i>Bidens bipinnata</i>	Common Wingstem	<i>Verbesina alternifolia</i>	English-Ivy	<i>Hedera helix</i>
Bull Thistle	<i>Cirsium vulgare</i>	Southern Crownbeard	<i>Verbesina occidentalis</i>	Bitter Sneezeweed	<i>Helenium amarum</i>
Longstalk Coreopsis	<i>Coreopsis lanceolata</i>	Frostweed	<i>Verbesina virginica</i>	Little Bluestem	<i>Schizachyrium scoparium</i>
Calliopsis	<i>Coreopsis tinctoria</i>	Asiatic Hawk's-beard	<i>Youngia japonica</i>	Tall Goldenrod	<i>Solidago altissima</i>
Eastern Purple Coneflower	<i>Echinacea purpurea</i>	Common Elderberry	<i>Sambucus canadensis</i>	Fringed Sedge	<i>Carex crinita</i>
Leafy Elephant's-foot	<i>Elephantopus carolinianus</i>	Japanese Honeysuckle	<i>Lonicera japonica</i>	Big Bluestem	<i>Andropogon gerardii</i>
Common Elephant's-foot	<i>Elephantopus tomentosus</i>	English Ivy	<i>Hedera helix</i>	Common Milkweed	<i>Asclepias syriacus</i>
Fireweed	<i>Erechtites hieraciifolius</i>	Honewort	<i>Cryptotaenia canadensis</i>	American Burnweed	<i>Erechtites hieracifolia</i>
Daisy Fleabane	<i>Erigeron strigosus</i>	Queen-Anne's-lace	<i>Daucus carota</i>	Eastern Black Nightshade	<i>Solanum ptychanthum</i>
Common Horseweed	<i>Erigeron canadensis</i>	Rattlesnake-master	<i>Eryngium yuccifolium</i>	Golden Cattail Sedge*	<i>Carex aureolensis</i>
White-bracted Thoroughwort	<i>Eupatorium album</i>	Sanicle	<i>Sanicula canadensis</i>	Tropical Finger-Grass*	<i>Digitaria ciliaris</i>
Common Dog-fennel	<i>Eupatorium capillifolium</i>	Brittle-gill	<i>Russula sp.</i>	Scarlet Hibiscus*	<i>Hibiscus coccineus</i>
Hyssopleaf Eupatorium	<i>Eupatorium hyssopifolium</i>	Ringless Honey Mushroom	<i>Armillariella tabascens</i>	Few-flowered Tick-trefoil*	<i>Hylodesmum pauciflorum</i>

Korean Clover
Kummerowia stipulacea
Prickly Lettuce*
Lactuca serriola
False Solomon's Seal*
Maianthemum sp.
Arrowleaf Clover*
Trifolium vesiculosum
Blue Vervain*
Verbena hastata
Geranium
Geranium sp.

FAUNA

Button Snail
Mesomphix sp.
Greenhouse Millipede
Oxidus gracilis
Spiny-backed Spider
Micrathena gracilis
Arrow-shaped Spiny-back
Micrathena sagittata
White Micrathena
Micrathena mitrata
Yellow Garden Spider
Argiope aurantia
Green-legged Orbweaver
Mangora maculata
Basilica Orbweaver
Mecynogea lemniscata
Arabesque Orbweaver
Neoscona arabesca
Orbweaver
Neoscona sp.
Marbled Orbweaver
Araneus marmoreus
Long-jawed Orbweaver
Tetragnatha sp.
Orchard Orbweaver
Leucauge venusta
Ground Crab Spider
Xysticus sp.
Crab Spider
Mecaphesa sp.
Decorated Habronattus Jumper
Habronattus decorus
Ghost Spider
Wulfilia albens
Daddy-long-legs
Leiobunum sp.
Lone Star Tick
Amblyomma americanum
Carolina Locust
Dissosteira carolina

American Bird Grasshopper
Schistocerca americana
Angular-winged Katydid
Microcentrum retinerve
Fork-tailed Bush Katydid
Scudderia furcata
Shield-backed Katydid
Atlantiscus sp.
Red-headed Bush Cricket
Phyllopalpus pulchellus
Meadow Katydid
Conocephalus sp.
Stink Bug
Mormidea lugens
Brown Stink Bug
Euschistus sp.
Leaf-footed Bug
Acanthocephala femorata
Leaf-footed Bug
Acanthocephala terminalis
Leaf-footed Bug
Leptoglossus phyllopus
Two-lined Spittlebug
Prosapia bicincta
Sharp-headed Sharpshooter
Draeculacephala robinsoni
Fusiform Oak Apple Gall Wasp
Amphibolips acuminata
Gouty Oak Gall Wasp
Callirhytis quercuspunctata
Velvet-ant
Pseudomethoca similima
Noble Scoliid Wasp
Scolia nobilitata
Red Imported Fire Ant
Solenopsis invicta
Red Carpenter Ant
Camponotus castaneus
Carpenter Ant
Camponotus sp.
Silky Ant
Formica subsericea
Paper Wasp
Polistes annularis
Great Golden Digger Wasp
Sphex ichneumoneus
Great Black Digger Wasp
Sphex pensylvanicus
Thread-waisted Wasp
Ammophila sp.
Eastern Carpenter Bee
Xylocopa virginica
Bumblebee
Bombus impatiens

Brown-belted Bumblebee
Bombus griseocollis
American Bumblebee
Bombus pensylvanicus
Two-spotted Bumblebee
Bombus bimaculatus
Western Honey Bee
Apis mellifera
Progressive Bee Fly
Exoprosopa sp.
Thick-headed Fly
Physocephala sp.
Goldenrod Ball Gall
Eurosta solidaginis
Black-shouldered Spinyleg
Dromogomphus spinosus
Common Sanddragon
Progomphus obscurus
Mocha Emerald
Somatochlora linearis
Eastern Pondhawk
Erythemis simplicicollis
Slaty Skimmer
Libellula incesta
Widow Skimmer
Libellula luctuosa
Great Blue Skimmer
Libellula vibrans
Blue Dasher
Pachydiplax longipennis
Eastern Amberwing
Perithemis tenera
Common Whitetail
Plathemis lydia
Ebony Jewelwing
Calopteryx maculata
Blue-ringed Dancer
Argia sedula
Blue-tipped Dancer
Argia tibialis
Fragile Forktail
Ischnura posita
Carrion Beetle
Necrophila americana
Japanese Beetle
Popillia japonica
Flower Scarab Beetle
Trigonopeltastes delta
Net-winged Beetle
Caenia dimidiata
Firefly; Lightning Beetle
Photinus pyralis
Seven-spotted Lady Beetle
Coccinella septempunctata

Tumbling Flower Beetle	Spiny Oakworm Moth	Blue Jay
<i>Mordella marginata</i>	<i>Anisota stigma</i>	<i>Cyanocitta cristata</i>
Wide-necked Longhorn Beetle	Snowberry Clearwing	American Crow
<i>Orthosoma brunneum</i>	<i>Hemaris diffinis</i>	<i>Corvus brachyrhynchos</i>
Pipevine Swallowtail	Banded Tussock Moth	Fish Crow
<i>Battus philenor</i>	<i>Halysidota tessellaris</i>	<i>Corvus ossifragus</i>
Zebra Swallowtail	White-marked Tussock Moth	Tufted Titmouse
<i>Eurytides marcellus</i>	<i>Orgyia leucostigma</i>	<i>Baeolophus bicolor</i>
Sleepy Orange	Underwing Moth	Carolina Chickadee
<i>Abaeis nicippe</i>	<i>Catocala sp.</i>	<i>Poecile carolinensis</i>
Red-banded Hairstreak	Fowler's Toad	White-breasted Nuthatch
<i>Calycopis cecrops</i>	<i>Anaxyrus fowleri</i>	<i>Sitta carolinensis</i>
Juniper Hairstreak	Southern Cricket Frog	Brown-headed Nuthatch
<i>Callophrys gryneus</i>	<i>Acris gryllus</i>	<i>Sitta pusilla</i>
Gray Hairstreak	Cope's Gray Treefrog	Carolina Wren
<i>Strymon melinus</i>	<i>Hyla chrysoscelis</i>	<i>Thryothorus ludovicianus</i>
Eastern Tailed-blue	Squirrel Treefrog	Blue-gray Gnatcatcher
<i>Cupido comyntas</i>	<i>Hyla squirella</i>	<i>Poliotilta caerulea</i>
American Snout	American Bullfrog	Eastern Bluebird
<i>Libytheana carinenta</i>	<i>Lithobates catesbiana</i>	<i>Sialia sialis</i>
Variiegated Fritillary	Green Frog	Wood Thrush
<i>Euptoieta claudia</i>	<i>Lithobates clamitans</i>	<i>Hylocichla mustelina</i>
Pearl Crescent	Eastern Box Turtle	American Robin
<i>Phyciodes tharos</i>	<i>Terrapene carolina</i>	<i>Turdus migratorius</i>
American Lady	Toothed Skink	Northern Mockingbird
<i>Vanessa virginiensis</i>	<i>Plestiodon sp.</i>	<i>Mimus polyglottos</i>
Common Buckeye	Turkey Vulture	White-eyed Vireo
<i>Junonia coenia</i>	<i>Cathartes aura</i>	<i>Vireo griseus</i>
Red-spotted Purple	Black Vulture	Yellow-throated Vireo
<i>Limenitis arthemis astyanax</i>	<i>Coragyps atratus</i>	<i>Vireo flavifrons</i>
Carolina Satyr	Red-shouldered Hawk	Red-Eyed Vireo
<i>Hermeuptychia sosybius</i>	<i>Buteo lineatus</i>	<i>Vireo olivaceus</i>
Monarch	Mourning Dove	Prothonotary Warbler
<i>Danaus plexippus</i>	<i>Zenaida macroura</i>	<i>Protonotaria citrea</i>
Southern Pearly-eye	Yellow-billed Cuckoo	Black-and-white Warbler
<i>Lethe portlandia</i>	<i>Coccyzus americanus</i>	<i>Mniotilta varia</i>
Silver-spotted Skipper	Ruby-throated Hummingbird	Black-throated Blue Warbler
<i>Epargyreus clarus</i>	<i>Archilochus colubris</i>	<i>Setophaga caeruleascens</i>
Southern Cloudywing	Belted Kingfisher	Northern Parula
<i>Cecropterus bathyllus</i>	<i>Megasceryle alcyon</i>	<i>Setophaga americana</i>
Horace's Duskywing	Red-bellied Woodpecker	Yellow-throated Warbler
<i>Erynnis horatius</i>	<i>Melanerpes carolinus</i>	<i>Setophaga dominica</i>
Least Skipper	Downy Woodpecker	Pine Warbler
<i>Ancyloxypha numitor</i>	<i>Dryobates pubescens</i>	<i>Setophaga pinus</i>
Fiery Skipper	Great Crested Flycatcher	Swainson's Warbler
<i>Hylephila phyleus</i>	<i>Myiarchus crinitus</i>	<i>Limnothlypis swainsonii</i>
Dun Skipper	Eastern Wood-pewee	Common Yellowthroat
<i>Euphyes vestris</i>	<i>Contopus virens</i>	<i>Geothlypis trichas</i>
Whirlabout	Eastern Phoebe	Kentucky Warbler
<i>Hedone vibex</i>	<i>Sayornis phoebe</i>	<i>Geothlypis formosa</i>
Ailanthus Webworm Moth	Acadian Flycatcher	Northern Cardinal
<i>Atteva aurea</i>	<i>Empidonax virescens</i>	<i>Cardinalis cardinalis</i>
Eastern Tent Caterpillar	Purple Martin	Indigo Bunting
<i>Malacosoma americanum</i>	<i>Progne subis</i>	<i>Passerina cyanea</i>

Blue Grosbeak
Passerina caerulea

Eastern Towhee
Pipilo erythrophthalmus

Common Grackle
Quiscalus quiscula

Orchard Oriole
Icterus spurius

Summer Tanager
Piranga rubra

American Goldfinch
Spinus tristis

Eastern Gray Squirrel
Sciurus carolinensis

American Beaver
Castor canadensis

White-tailed Deer
Odocoileus virginianus

Cherry Millipede
Xystodesmidae sp.

Eastern Tiger Swallowtail
Papilio glaucus

Spicebush Swallowtail
Papilio troilus

Whirlabout
Polites vibex

Southern Cloudywing
Thorybes bathyllus

American Bullfrog
Lithobates catesbeianus

Leopard Slug*
Limax maximus

Crayfish
Astacoidea sp.

Orbweaver*
Mangora spiculata

Common Pirate Spider*
Mimetus puritanus

Two-striped Planthopper*
Acanalonia bivittata

Fall Cankerworm*
Alsophila pometaria

Yellow-spotted Webworm Moth*
Anageshna primordialis

Clay-colored Leaf Beetle*
Anomoea laticlavata

Case-bearing Leaf Beetle*
Bassareus mammifer

Asian Needle Ant*
Brachyponera chinensis

Vetch Looper Moth*
Caenurgia chloropa

Carolina Leafroller Cricket*
Camptonotus carolinensis

Fly*
Camptoprosopella sp.

Phantom Midge*
Chaoborus albatus

Dogwood Spittlebug*
Clastoptera proteus

Ichneumonid Wasp*
Cratichneumon w-album

Bicolored Checkered Beetle*
Cymatodera bicolor

Sharpshooter*
Draeculacephala antica

Bad-wing Moth*
Dyspteris abortivaria

Band-winged Bee Fly*
Exoprosopa fascipennis

Northern Flatid Planthopper*
Flatormenis proxima

Parallel-striped Sweat Bee*
Halictus parallelus

Spined Stilt Bug*
Jalysus wickhami

Ornate Planthopper*
Liburniella ornata

Predatory Fungus Gnat*
Macrocera scoparia

Scissor-grinder Cicada*
Neotibicen pruinosus

Tiger Crane Fly*
Nephrotoma suturalis

Black-blotched Prominent*
Oedemasia leptinoides

Skullcap Skeletonizer Moth*
Prochoreutis inflatella

Leafhopper*
Scaphoideus opalinus

Sphex flavovestitus*
Sphex flavovestitus

Antlered Flutter Fly*
Toxonevra superba

Fly*
Xenochaetina flavipennis

Planthopper*
Acanalonia sp.

Braconid Wasp*
Atanycolus sp.

Long-legged Fly*
Condylostylus sp.

Crambid Snouth Moth*
Crambus sp.

Tussock Moth*
Dasychira sp.

Treehopper*
Entylia sp.

Planthopper*
Kelisia sp.

Common Tree Crickets*
Oecanthus sp.