



SOUTH CAROLINA ASSOCIATION OF NATURALISTS

SCAN

PO Box 24911
Columbia, SC 29224
www.scnaturalists.org

June 2025

Hello SCAN Crew!

I hope everyone has recovered from last month's camping trip. Are you ready for another opportunity? Due to a last-minute schedule change at the Catawba Walking Trails, we had to pivot and find a new spot to explore. We're excited to announce that we're headed to Fishing Creek Place in York County. Our host has graciously offered to let us camp onsite! Read on for all the details. As a heads up, we might also have a change in location for August due to ongoing habitat restoration at the Great Pee Dee HP/WMA.

Last Month: Francis Marion National Forest and the Swamp Fox Passage of the Palmetto Trail

Thanks to everyone who trekked to the Francis Marion National Forest for the annual bioblitz with the Under a Low Country Moon nature group. We had a fantastic time! The weather was quite nice most of the weekend, with mostly sunny skies and highs in the mid to upper 80ies and lows in the 60ies overnight. The outlier was Sunday when 1.3" of rain throughout the day resulted in the temperature only reaching the mid 70ies. Leading up to the trip, the area had been experiencing a moderate drought, with some rain in May slowly relieving the dry conditions.

Overall, I think the group saw fewer snakes, frogs and turtles due to the drier conditions. Surprising to me were the absolutely gorgeous swaths of pitcher plants in the various bogs throughout the area. The ground was dry but the plants were thriving. People spent a lot of time exploring Florida Bay and other pockets of pitchers throughout the area.

This year's headliner snake was the Pygmy Rattlesnake! Many of the cruising groups spotted them along Farewell Corner Road. Intrepid night cruisers and walkers eventually found Northern Cottonmouths tucked up in the roadside ditches on Hell Hole Road. We're still compiling the species list, so if you saw something and it's not included in the attached list, please email Tom Austin at scnaturalists76@gmail.com.

Our Saturday outing to the Swamp Fox Passage of the Palmetto Trail was a huge success! Several new members joined us for the day. The Carolina Bay was beautiful and finding an active Red-cockaded Woodpecker nest enthralled everyone. The trail was well-marked and maintained. With multiple parking areas and access points, this section of the Passage along Halfway Creek Road is a nice option for folks looking for shorter, easy, one-way interesting trails to explore.

This Month: Fishing Creek Place in York County

With over five miles of hiking trails, [a restored cemetery](#), creeks, a beaver pond, bottomland, hardwoods and a gracious host who already knows how our group operates, Fishing Creek Place has something for everyone! Located in York County, the property is protected by a conservation easement with the [Katawba Valley Land Trust](#). If you're interested in camping onsite, please contact Andrew Lazenby at joemess2@gmail.com (the sooner the better so he knows how large of a group to expect).

Kim McManus, Secretary

Photos from the Francis Marion National Forest and the Palmetto Trail



Attendees - Swamp Fox Passage of the Palmetto Trail:

Andrew Lazenby, Angela Valvasori, Bill Twomey, Caroline Yeh, Courtney Burge, Dave Kastner, Jeff Yeh, Jennifer Fill, Kim McManus, Lee Morris, Mandy Johnson, Marty Kastner, Ron Ahle, Sara McAllister, Sharon Watson, Sharon Yomtob, Samantha McCann, Stephen Crotts, Tess Moody, Todd Johnston, Tom Austin, Will Burge, Yuri Yeh



Attendees – Potluck Dinner:

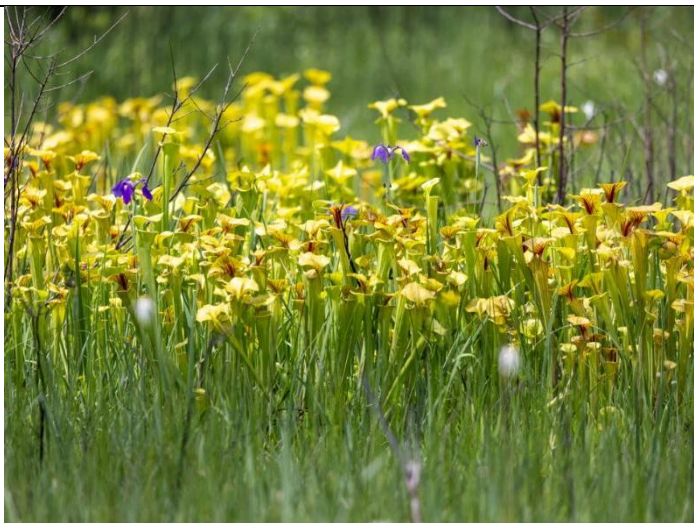
Amanda Kalbach, Andrew Lazenby, Angela Valvasori, Barbara Foster, Brandy (Border Collie), Miss Charlotte, Courtney Burge, Dave Kastner, Eddie Hade, Elaine Tanchin, Ellen Fishburne, Frank Fleming, Greg Ross, Jackie Holmes Burns, Jennifer Fill, June Harmon, Kate Fleming, Lee Morris, Mandy Johnson, Marty Kastner, Nicole Hafer-Lipstreu, Oak (American Fox Hound), Patrick Hade, Ron Ahle, Sara McAllister, Sharon Watson, Sharon Yomtob, Stephen Crotts, Stephen Prior, Tess Moody, Todd Johnston, Tom Austin, Tucker (Boxer), Ty Hade, Will Burge



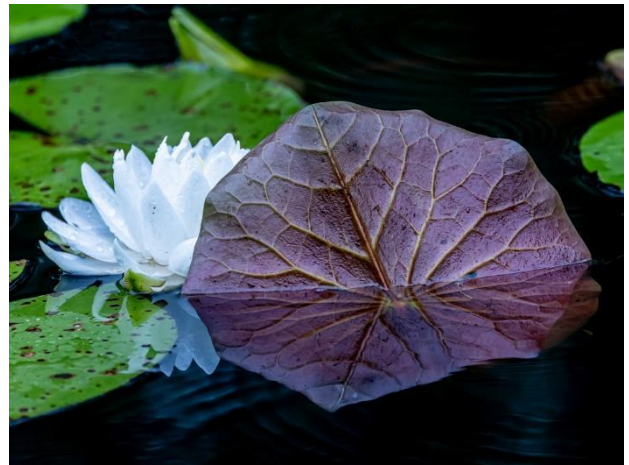
Swallow-tailed Kite (*Elanoides forficatus*)



Red-banded Hairstreak (*Calycopis cecrops*)



Pitcher Plants and friends



American White Waterlily (*Nymphaea odorata*)



Having fun at camp



Night cruising, with turtle touching™.



Yellow-crowned Night Heron (*Nyctanassa violacea*)



Eastern Box Turtle (*Terrapene Carolina ssp. carolina*)



Attenuated Bluet (*Enallagma daeckii*)



Plain-bellied Watersnake (*Nerodia erythrogaster*)



Eastern Tiger Swallowtail (*Papilio glaucus*)



Northern Cottonmouth (*Agkistrodon piscivorus*)



Basilica Orbweaver (*Mecynogea lemniscata*)



Variegated Fritillary (*Euptoieta claudia*) photo Bill Twomey



Pink Sundew (*Drosera capillaris*)



Magnolia Green Jumping Spider (*Lyssomanes viridis*)



Exploring the Swamp Fox Passage



Watching the Red-cockaded Woodpecker nest

The magic of Hell Hole truly shines in these Milky Way and firefly images by Sara McAllister:



Fishing Creek Place
A Catawba Valley Land Trust Property

York County, SC
(34.9191780, -81.1636706)
June 28, 2025 | 10:30am- 4:30pm

We have a trade! Due to a scheduling conflict, The Catawba Walking Trails trip has been postponed. Fear not as Tom Austin and Andrew Lazenby have conspired to link us up with a fascinating property in York County for our June outing. We will be meeting at 10:30am. Parking will be along the driveway and along the field on the right as you drive in.

There are also a couple unique opportunities with this property. First is the healthy and growing Pawpaw population. If you have a good location and bring the tools necessary to transplant, we can select a few specimens for relocation. Second, you can bring a suit and take a dip in the koi pond. There are several varieties of koi including several large specimens in the pond. Finally, we have the opportunity to camp in the fields on the property. Please let Andrew know you are interested or if you have questions by reaching out to him directly so he can plan accordingly:
joemess2@gmail.com.

The Fishing Creek Property was originally part of the Lowry plantation property back in the 1820s. Andrew and his family led the investigation into the property and paid to have ground penetrating radar to find [144 graves on the property](#). If we are lucky Andrew can share some more details of the Fishing Creek Place Cemetery during our visit. Today, of the 154 acres, 110 are part of the easement with a baseline study still pending before a decision to add the additional acreage is possible.

There are a variety of habitats within the property. There are two piedmont prairie projects and an FWS project on the property. These open grasslands should provide some areas to explore the butterflies, wildflowers and dragonflies. The original property has some thick hardwood forest while the newer property is slightly less dense. There are a few unmanaged loblolly pines along the trails as well. Throughout the property you might notice some boulders that are part of the Chester dike that crosses the property. The forests slope down and along three creeks.

Two of the creeks are spring-fed. One of the springs is on the property and the other is from a neighboring property. Keep your eyes peeled for green dragons near the spring on the property. Fishing Creek is the largest of the three streams and continues on towards the Great Falls reservoir. The beavers on the property have created an ever-growing wetlands. All these factors contribute to a rich environment for possible salamanders. Bring your waders and feel free to explore. It is also of note and not a surprise that Andrew has some coverboards on the property. If interested, ask him about one of the locations to investigate further.

Directions

(34.9191780, -81.1636706)

Alternatively, put this address in the GPS and look for the mailbox with 4072 once you reach the general area:

4080 Hwy 324, Rock Hill, SC 20732

From I-77 North (Columbia and points South or East):

Take I-77 exit 73

Turn left off the ramp onto SC 901 N

Proceed 1.1 Miles

Turn Left onto Oakdale Rd and drive 2.1 miles

Turn left onto SC 121/SC 72 W Saluda Ave and drive 2.4 Miles

Turn Right onto SC 324 W

After about 7 miles the destination will be on the right.

There will be a long driveway and the mailbox says 4072.

From the Northwestern Portion of SC:

Take I-85 N to exit 102

Proceed down the exit ramp and turn Right onto SC 5/ N. Mountain St.

Drive 18 Miles

Proceed through the traffic signal at the intersection onto SC 5 Business

Drive 1.2 miles and turn Right onto US 321

After driving 4.7 miles, turn left onto State Rte. 32/ Cameron Rd

Drive 3.9 miles

At the traffic circle, take the 2nd exit onto SC 324 E

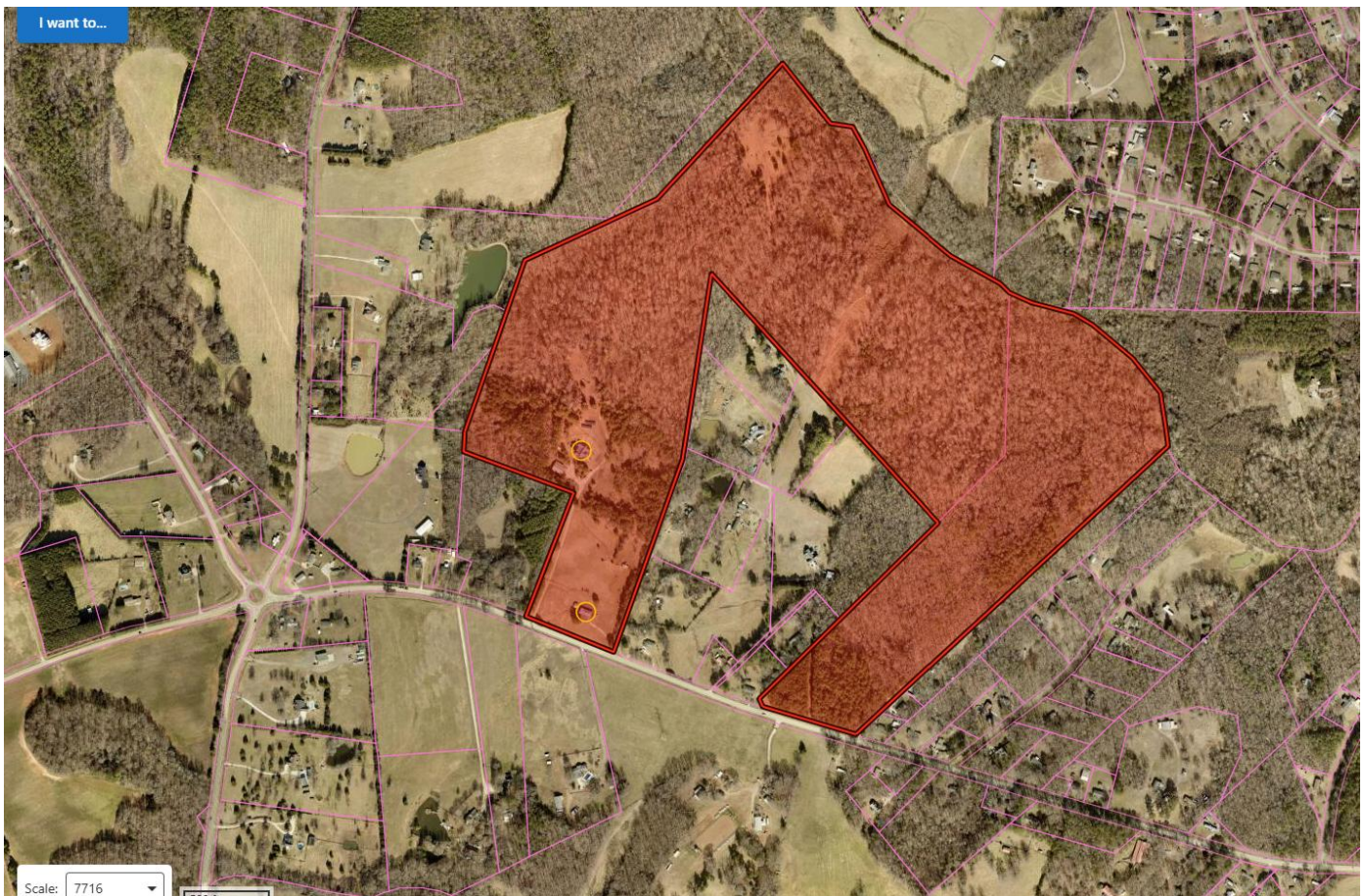
In about a quarter-mile you will arrive at a mailbox with 4072 on it

Proceed down the long driveway

See you soon!

Todd Johnston

Northern Regional Director



FMNF - Halfway Creek Trail & Hell Hole Wilderness
Charleston & Berkeley Co., SC
May 22-26, 2025

This list was produced by SCAN from sightings produced by SCAN members and is subject to revision as needed. An asterisk (*) indicates a new sighting for SCAN. Send any changes or corrections to Tom Austin at scnaturalists76@gmail.com. Please indicate exactly to which flora/fauna list you are referring to in the subject line of your message. Thank you.

LICHENS

Cladonia cristatella
Cladonia subtenuis

FLORA

Peat Moss

Sphagnum sp.

Foxtail Clubmoss

Lycopodiella alopecuroides

American Royal Fern

Osmunda spectabilis

Cinnamon Fern

Osmundastrum cinnamomeum

Bracken

Pteridium aquilinum

Virginia Chain Fern

Anchistea virginica

Netted Chain Fern

Lorinseria areolata

Kunth's Maiden Fern

Pelazoneuron kunthii

Resurrection Fern

Pleopeltis michauxiana

Longleaf Pine

Pinus palustris

Pond Pine

Pinus serotina

Loblolly Pine

Pinus taeda

Pond-cypress

Taxodium ascendens

Bald-cypress

Taxodium distichum

White Water-lily

Nymphaea odorata

Lizard's-tail

Saururus cernuus

Sweetbay

Magnolia virginiana

Swamp Bay

Persea palustris

Sassafras

Sassafras albidum

Arrowhead

Sagittaria graminea

Northern White Colic-root

Aletris farinosa

Sawtooth Greenbrier

Smilax bona-nox

Whiteleaf Greenbrier

Smilax glauca

Bamboo-vine

Smilax laurifolia

Jackson-brier

Smilax smallii

Bristly Greenbrier

Smilax tamnoides

Greenbrier

Smilax sp.

Common Grass-pink

Calopogon tuberosus

Grass-leaved Ladies'-tresses

Spiranthes praecox

Large Spreading Pogonia

Cleistesiosopsis divaricata

Savanna Iris

Iris tridentata

Southern Blue Flag

Iris virginica

Lawn Blue-eyed-grass

Sisyrinchium rosulatum

Onion

Allium sp.

Cabbage Palmetto

Sabal palmetto

Roseling

Cuthbertia rosea

Pickerelweed

Pontederia cordata

Redroot

Lachnanthes caroliniana

Southern Cattail

Typha domingensis

Spanish-moss

Tillandsia usneoides

Pineland Yellow-eyed Grass

Xyris caroliniana

Pipewort

Eriocaulon compressum

Common Ten-angled Pipewort

Eriocaulon decangulare

Common Bogbutton

Lachnocaulon anceps

Rush

Juncus sp.

Spikerush

Eleocharis sp.

Narrowleaf Whitetop Sedge

Rhynchospora colorata

Fascicled Beaksedge

Rhynchospora fascicularis

Broadleaf Whitetop Sedge

Rhynchospora latifolia

Beaksedge

Rhynchospora sp.

Dryland White Bluestem

Andropogon capillipes

Old-field Broomstraw

Andropogon virginicus

Southern Wiregrass

Aristida beyrichiana

Switch Cane

Arundinaria tecta

Toothache Grass

Ctenium aromaticum

Bermuda Grass

Cynodon dactylon

Hairy Rosette-Grass

Dichantherium acuminatum

Open-flower Witchgrass

Dichantherium laxiflorum

Velvet Witchgrass

Dichantherium scoparium

Witchgrass

Dichantherium sp.

Common Eastern Wild-rye

Elymus virginicus

Centipede Grass

Eremochloa ophiuroides

Maidencane

Hymenachne hemitoma

Tall Fescue

Lolium arundinaceum

Switchgrass

Panicum virgatum

Bahia Grass

Paspalum notatum

Early Paspalum

Paspalum praecox

Vasey Grass

Paspalum urvillei

Yellow Indiangrass

Sorghastrum nutans

Redtop

Tridens flavus

Sweet Gum	<i>Liquidambar styraciflua</i>	White Clover	<i>Trifolium repens</i>	St. Andrew's Cross	<i>Hypericum hypericoides</i>
Feathery Mermaid-weed	<i>Proserpinaca pectinata</i>	Viperina	<i>Zornia bracteata</i>	St.-John's-wort	<i>Hypericum sp.</i>
Muscadine	<i>Vitis rotundifolia</i>	Tall Pinebarren Milkwort	<i>Polygala cymosa</i>	Passionflower	<i>Passiflora incarnata</i>
Grape	<i>Vitis sp.</i>	Orange Milkwort	<i>Polygala lutea</i>	Tread-softly	<i>Cnidocolus stimulosus</i>
Virginia-creeper	<i>Parthenocissus quinquefolia</i>	Short Pinebarren Milkwort	<i>Polygala ramosa</i>	White Sandhills Spurge	<i>Euphorbia curtisii</i>
Peppervine	<i>Nekemias arborea</i>	Showy Milkwort	<i>Asemeia grandiflora</i>	Southeastern Flowering Spurge	<i>Euphorbia pubentissima</i>
Mimosa	<i>Albizia julibrissin</i>	Mock Strawberry	<i>Potentilla indica</i>	Smooth Meadow-beauty	<i>Rhexia alifanus</i>
Dwarf Indigo-bush	<i>Amorpha herbacea</i>	Sawtooth Blackberry	<i>Rubus argutus</i>	Yellow Meadow-beauty	<i>Rhexia lutea</i>
Common Groundnut	<i>Apios americana</i>	Sand Blackberry	<i>Rubus cuneifolius</i>	Hairy Meadow-beauty	<i>Rhexia nashii</i>
Atlantic Pidgeonwings	<i>Clitoria mariana</i>	Southern Dewberry	<i>Rubus trivialis</i>	Virginia Meadow-beauty	<i>Rhexia virginica</i>
Coastal Plain Rattlebox	<i>Crotalaria purshii</i>	New Jersey Tea	<i>Ceanothus americanus</i>	Winged Sumac	<i>Rhus copallinum</i>
Low Rattlebox	<i>Crotalaria rotundifolia</i>	Common Chinquapin	<i>Castanea pumila</i>	Poison Oak	<i>Toxicodendron pubescens</i>
Coral Bean	<i>Erythrina herbacea</i>	Running Oak	<i>Quercus elliotii</i>	Poison-Ivy	<i>Toxicodendron radicans</i>
Milkpea	<i>Galactia volubilis</i>	Southern Red Oak	<i>Quercus falcata</i>	Red Maple	<i>Acer rubrum</i>
Carolina Indigo	<i>Indigofera caroliniana</i>	Sand Live Oak	<i>Quercus geminata</i>	Eastern Rose-mallow	<i>Hibiscus moscheutos</i>
Korean Clover	<i>Kummerowia stipulacea</i>	Sand Laurel Oak	<i>Quercus hemisphaerica</i>	Savannah Primrose-Willow	<i>Lugwigia virgata</i>
Slimleaf Ticktrefoil	<i>Desmodium tenuifolium</i>	Bluejack Oak	<i>Quercus incana</i>	Frostweed	<i>Crocianthemum sp.</i>
Florida Tick-trefoil	<i>Desmodium tortuosum</i>	Turkey Oak	<i>Quercus laevis</i>	Venus Flytrap	<i>Dionaea muscipula</i>
Velvetleaf Ticktrefoil	<i>Desmodium viridiflorum</i>	Sand Post Oak	<i>Quercus margaretiae</i>	Pink Sundew	<i>Drosera capillaris</i>
Bush-clover	<i>Lespedeza capitata</i>	Blackjack Oak	<i>Quercus marilandica</i>	Water Sundew	<i>Drosera intermedia</i>
Sericea Lespedeza	<i>Lespedeza cuneata</i>	Dwarf Live Oak	<i>Quercus minima</i>	Flowering Dogwood	<i>Cornus florida</i>
Blue Sandhill Lupine	<i>Lupinus diffusus</i>	Water Oak	<i>Quercus nigra</i>	Water Tupelo	<i>Nyssa aquatica</i>
Pink Sandhill Lupine	<i>Lupinus villosus</i>	Post Oak	<i>Quercus stellata</i>	Swamp Tupelo	<i>Nyssa biflora</i>
Dollarweed	<i>Rhynchosia reniformis</i>	Live Oak	<i>Quercus virginiana</i>	Blackgum	<i>Nyssa sylvatica</i>
Red Sesban	<i>Sesbania punicea</i>	Common Wax-myrtle	<i>Morella cerifera</i>	Carolina Phlox	<i>Phlox carolina</i>
Pencil-flower	<i>Stylosanthes biflora</i>	Dwarf Wax-myrtle	<i>Morella pumila</i>	American Persimmon	<i>Diospyros virginiana</i>
Spiked Hoarypea	<i>Tephrosia spicata</i>	Pignut Hickory	<i>Carya glabra</i>	Loblolly Bay	<i>Gordonia lasianthus</i>
Virginia Goat's-rue	<i>Tephrosia virginiana</i>	Sand Hickory	<i>Carya pallida</i>	Sweetleaf	<i>Symplocos tinctoria</i>
Low Hop Clover	<i>Trifolium dubium</i>	St. Andrew's Cross	<i>Hypericum crux-andreae</i>	Yellow Pitcherplant	<i>Sarracenia flava</i>

Hooded Pitcherplant	<i>Sarracenia minor</i>	American Broad-leaved Plantain	<i>Plantago rugelii</i>	Daisy Fleabane	<i>Erigeron strigosus</i>
Coastal Sweet Pepperbush	<i>Clethra alnifolia</i>	Cross-vine	<i>Bignonia capreolata</i>	Whitetop Fleabane	<i>Erigeron vernus</i>
Downy Sweet Pepperbush	<i>Clethra tomentosa</i>	Creeping Frogfruit	<i>Phyla nodiflora</i>	Daisy Fleabane	<i>Erigeron sp.</i>
Ti-ti	<i>Cyrilla racemiflora</i>	Carolina-vervain	<i>Stylodon carneus</i>	White-bracted Thoroughwort	<i>Eupatorium album</i>
Dangleberry	<i>Gaylussacia frondosa</i>	Beautyberry	<i>Callicarpa americana</i>	Common Dog-fennel	<i>Eupatorium capillifolium</i>
Shining Fetterbush	<i>Lyonia lucida</i>	Cluster Bushmint	<i>Hyptis alata alata</i>	Coastal Dog-fennel	<i>Eupatorium compositifolium</i>
Staggerbush	<i>Lyonia mariana</i>	Self-heal	<i>Prunella vulgaris</i>	Common Roundleaf Eupatorium	<i>Eupatorium rotundifolium</i>
Dwarf Azalea	<i>Rhododendron atlanticum</i>	Lyreleaf Sage	<i>Salvia lyrata</i>	American Cudweed	<i>Gamochaeta americana</i>
Smooth Highbush Blueberry	<i>Vaccinium corymbosum</i>	Narrowleaf Skullcap	<i>Scutellaria integrifolia</i>	Dragon's-head Lily	<i>Gladiolus dalenii</i>
Creeping Blueberry	<i>Vaccinium crassifolium</i>	Common Blue Curls	<i>Trichostema dichotomum</i>	Southeastern Sneezeweed	<i>Helenium pinnatifidum</i>
Hairy Highbush Blueberry	<i>Vaccinium fuscatum</i>	Savanna Bluehearts	<i>Buchnera floridana</i>	Variableleaf Sunflower	<i>Helianthus heterophyllus</i>
Southern Blueberry	<i>Vaccinium tenellum</i>	Chaffseed	<i>Schwalbea americana</i>	Appalachian Sunflower	<i>Helianthus atrorubens</i>
Coastal Bedstraw	<i>Galium bermudense</i>	Big Gallberry	<i>Ilex coriacea</i>	Beaked Hawkweed	<i>Hieracium gronovii</i>
Bedstraw	<i>Galium sp.</i>	Little Gallberry	<i>Ilex glabra</i>	Stiff-leaved Aster	<i>Ionactis linariifolia</i>
Poorjoe	<i>Hexasepalum teres</i>	American Holly	<i>Ilex opaca</i>	Virginia Dwarf-dandelion	<i>Krigia virginica</i>
Carolina Jessamine	<i>Gelsemium sempervirens</i>	Boykin's Lobelia	<i>Lobelia boykinii</i>	Grass-leaved Lettuce	<i>Lactuca graminifolia</i>
Sandhills Milkweed	<i>Asclepias humistrata</i>	Nuttall's Lobelia	<i>Lobelia nuttallii</i>	Grass-leaved Golden-aster	<i>Pityopsis graminifolia</i>
Few-flower Milkweed	<i>Asclepias lanceolata</i>	Common Ragweed	<i>Ambrosia artemisiifolia</i>	Rose Fleabane	<i>Pluchea baccharis</i>
Savanna Milkweed	<i>Asclepias longifolia</i>	Silverling	<i>Baccharis halimifolia</i>	Blackroot	<i>Pterocaulon pycnostachyum</i>
Butterfly-weed	<i>Asclepias tuberosa</i>	Sunbonnets	<i>Chaptalia tomentosa</i>	Black-eyed Susan	<i>Rudbeckia hirta</i>
White Milkweed	<i>Asclepias variegata</i>	Cottonleaf Golden-aster	<i>Chrysopsis gossypina</i>	Twisted-leaf White-top Aster	<i>Sericocarpus tortifolius</i>
Eastern Anglepod	<i>Gonolobus suberosus</i>	Yellow Thistle	<i>Cirsium horridulum</i>	Bearsfoot	<i>Smallanthus uvedalia</i>
Common Dawnflower	<i>Stylisma patens</i>	Coastal Tall Thistle	<i>Cirsium nuttallii</i>	Tall Goldenrod	<i>Solidago altissima</i>
Carolina Horsenettle	<i>Solanum carolinense</i>	Sandhill Thistle	<i>Cirsium repandum</i>	Leafy Pineywoods Goldenrod	<i>Solidago tortifolia</i>
Polypremum	<i>Polypremum procumbens</i>	Mistflower	<i>Conoclinium coelestinum</i>	American Aster	<i>Symphotrichum walteri</i>
Blue Water-hyssop	<i>Bacopa caroliniana</i>	Pool Coreopsis	<i>Coreopsis falcata</i>	Sandhill Ironweed	<i>Vernonia angustifolia</i>
Eastern Smooth Beardtongue	<i>Penstemon laevigatus</i>	Calliopsis	<i>Coreopsis tinctoria</i>	Asiatic Hawk's-beard	<i>Youngia japonica</i>
English Plantain	<i>Plantago lanceolata</i>	Southern Elephant's-foot	<i>Elephantopus elatus</i>	Common Elderberry	<i>Sambucus canadensis</i>
Broadleaf Plantain	<i>Plantago major</i>	Oak-leaved Fleabane	<i>Erigeron quercifolius</i>	Dune Pennywort	<i>Hydrocotyle bonariensis</i>

Centella*Centella erecta***Marsh-parsley***Cyclosporum leptophyllum***Rattlesnake-master***Eryngium yuccifolium***Oyster Mushroom***Pleurotus ostreatus***Pine Witches' Broom Phytoplasma***Phytoplasma pini***FAUNA****Leech***Hirudinea sp.***Square-back Marsh Crab***Sesarma cinereum***Florida Ivory Millipede***Chicobolus spinigerus***Bowl-and-doily Spider***Frontinella pyramitela***Crab-shaped Spiny-back***Gasteracantha cancriformis***Arrow-shaped Spiny-back***Micrathena sagittata***Yellow Garden Spider***Argiope aurantia***Lined Orbweaver***Mangora gibberosa***Basilica Orbweaver***Mecynogea lemniscata***Arabesque Orbweaver***Neoscona arabesca***Mabel Orchard Orbweaver***Leucauge argyrobapta***Golden Silk Orbweaver***Trichonephila clavipes***Six-spotted Fishing Spider***Dolomedes triton***Wolf Spider***Lycosidae family***Crab Spider***Mecaphesa sp.***Leafcurling Sac Spider***Clubiona sp.***Trashline Orbweaver***Cyclosa sp.***Grass Orb-web Spider***Larinia sp.***Typical Funnel Weaver***Agelenidae sp.***Leafy Oak Gall Wasp***Andricus quercusfoliatus***Magnolia Green Jumper***Lyssomanes viridis***Woodland Jumper***Colonus sylvanus***Decorated Habronattus Jumper***Habronattus decorus***Eastern Harvestman***Leiobunum vittatum***Lone Star Tick***Amblyomma americanum***Firefly***Lampyridae sp.***Grasshopper***Orphulella pelidna***American Bird Grasshopper***Schistocerca americana***Leather-color Bird Grasshopper***Schistocerca alutacea***Fork-tailed Bush Katydid***Scudderella furcata***Bush Katydid***Scudderella sp.***Carolina Mantis***Stagmomantis carolina***Bee Assassin Bug***Apiomerus crassipes***Wheel Bug***Arilus cristatus***Red Bay Gall Psyllid***Trioza magnoliae***Antlion***Myrmeleon sp.***Red-headed Pine Sawfly***Neodiprion lecontei***Velvet-ant***Pseudomethoca similima***Feather-legged Scoliid Wasp***Dielis plumipes***Fraternal Potter Wasp***Eumenes fraternus***Paper Wasp***Polistes sp.***Black & Yellow Mud-dauber***Sceliphron caementarium***Bumblebee***Bombus impatiens***Two-spotted Bumblebee***Bombus bimaculatus***Lovebug***Plecia nearctica***Green Horse Fly***Chlorotabanus crepuscularis***Yellow Fly***Diachlorus ferrugatus***Goldenrod Ball Gall Fly***Eurosta solidaginis***Reticulated Fruitworm Moth***Cenopsis reticulatana***Elm Sawfly***Cimbex americanus***Coccobaphes frontifer***Coccobaphes frontifer***Disholcaspis quercusvirens***Disholcaspis quercusvirens***Wool-bearing Gall Wasp***Druon quercuslanigerum***Northern Flatid Planthopper***Flatormenis proxima***Herpetogramma theseusalis***Herpetogramma theseusalis***Larra bicolor***Larra bicolor***Iris Weevil***Mononychus vulpeculus***Hieroglyphic Cicada***Neocicada hieroglyphica***Dusky-winged Hover Fly***Ocyrtamus fuscipennis***Atlantic Grasshopper***Paroxya atlantica***Phylloxera caryaefallax***Phylloxera caryaefallax***Metric Paper Wasp***Polistes metricus***Large Four-spotted Scoliid Wasp***Pygodasis quadrimaculata***Sphex flavovestitus***Sphex flavovestitus***Systoechus candidulus***Systoechus candidulus***Bicolored Pyrausta Moth***Pyrausta bicoloralis***Thin-lined Calligrapher***Toxomerus boscii***Trichodes apivorus***Trichodes apivorus***Trypoxylon collinum***Trypoxylon collinum***Typocerus lunulatus***Typocerus lunulatus***Bee-Mimic Robberfly***Laphria sp.***Greenbottle Fly***Lucilia sp.***Fruit Fly***Neaspilota sp.***Common Tree Cricket***Oecanthus sp.***Marauder***Proctacanthus sp.***Common Flesh Fly***Sarcophaga sp.***Short-horned Grasshopper***Acrididae sp.***Robber Fly***Asilidae sp.***Net-winged Beetle***Lycidae sp.***Stink Bug***Pentatomidae sp.*

Swamp Darner	<i>Epiaschna heros</i>	King's Hairstreak	<i>Satyrium kingi</i>	Bluespotted Sunfish	<i>Enneacanthus gloriosus</i>
Taper-tailed Darner	<i>Gomphaeschna antilope</i>	Red-banded Hairstreak	<i>Calycopis cecrops</i>	Marbled Salamander	<i>Ambystoma opacum</i>
Halloween Pennant	<i>Celithemis eponina</i>	Gray Hairstreak	<i>Strymon melinus</i>	Southern Two-lined Salamander	<i>Eurycea cirrigera</i>
Bar-winged Skimmer	<i>Libellula axilena</i>	Eastern Tailed-blue	<i>Cupido comyntas</i>	Atl. Coast Slimy Salamander	<i>Plethodon chlorobryonis</i>
Painted Skimmer	<i>Libellula semifasciata</i>	Azure	<i>Celastrina sp.</i>	Southern Toad	<i>Anaxyrus terrestris</i>
Great Blue Skimmer	<i>Libellula vibrans</i>	Variiegated Fritillary	<i>Euptoieta claudia</i>	Eastern Spadefoot Toad	<i>Scaphiopus holbrookii</i>
Blue Dasher	<i>Pachydiplax longipennis</i>	Pearl Crescent	<i>Phyciodes tharos</i>	Eastern Narrow-mouthed Toad	<i>Gastrophryne carolinensis</i>
Southern Spreadwing	<i>Lestes australis</i>	American Lady	<i>Vanessa virginiensis</i>	Southern Cricket Frog	<i>Acris gryllus</i>
Attenuated Bluet	<i>Enallagma daeckii</i>	Common Buckeye	<i>Junonia coenia</i>	Pine Woods Treefrog	<i>Hyla femoralis</i>
Atlantic Bluet	<i>Enallagma doubledayi</i>	Red-spotted Purple	<i>Limenitis arthemis astyanax</i>	Squirrel Treefrog	<i>Hyla squirella</i>
Citrine Forktail	<i>Ischnura hastata</i>	Carolina Satyr	<i>Hermeuptychia sosybius</i>	American Bullfrog	<i>Lithobates catesbiana</i>
Southern Sprite	<i>Nehalennia integricollis</i>	Georgia Satyr	<i>Neonympha areolatus</i>	Bronze Frog	<i>Lithobates clamitans clamitans</i>
E. Pinebarrens Tiger Beetle	<i>Cicindela abdominalis</i>	Little Wood-satyr	<i>Megisto cymela</i>	Alligator	<i>Alligator mississippiensis</i>
Searcher; Ground Beetle	<i>Carabus vinctus</i>	Monarch	<i>Danaus plexippus</i>	Common Snapping Turtle	<i>Chelydra serpentina</i>
Tumblebug	<i>Canthon sp.</i>	Appalachian Brown	<i>Lethe appalachia</i>	Eastern Box Turtle	<i>Terrapene carolina</i>
Scarab Beetle	<i>Deltotilum gibbosum</i>	Southern Cloudywing	<i>Cecropterus bathyllus</i>	Yellow-bellied Slider	<i>Trachemys scripta scripta</i>
Flower Scarab Beetle	<i>Trigonopeltastes delta</i>	Horace's Duskywing	<i>Erynnis horatius</i>	Eastern Mud Turtle	<i>Kinosternon subrubrum</i>
Seven-spotted Lady Beetle	<i>Coccinella septempunctata</i>	Zarucco Duskywing	<i>Erynnis zarucco</i>	Green Anole	<i>Anolis carolinensis</i>
Longhorn Beetle	<i>Prionus pocularis</i>	Swarthy Skipper	<i>Nastra lherminier</i>	Eastern Fence Lizard	<i>Sceloporus undulatus</i>
Flower Longhorn Beetle	<i>Strangalia luteicornis</i>	Tawny-edged Skipper	<i>Polites themistocles</i>	Six-lined Racerunner	<i>Aspidocheilus sexlineata</i>
Cottonwood Leaf Beetle	<i>Chrysomela scripta</i>	Southern Broken-Dash	<i>Wallengrenia otho</i>	Broad-headed Skink	<i>Plestiodon laticeps</i>
12-spotted Cucumber Beetle	<i>Diabrotica undecimpunctata</i>	Delaware Skipper	<i>Anatrytone logan</i>	Black Racer	<i>Coluber constrictor</i>
Eastern Tiger Swallowtail	<i>Papilio glaucus</i>	Byssus Skipper	<i>Atrytone byssus</i>	Plain-bellied Water Snake	<i>Nerodia erythrogaster</i>
Palamedes Swallowtail	<i>Papilio palamedes</i>	Whirlabout	<i>Hedone vibex</i>	Rough Green Snake	<i>Opheodrys aestivus</i>
Pipevine Swallowtail	<i>Battus philenor</i>	Eufala Skipper	<i>Lerodea eufala</i>	Cottonmouth	<i>Agkistrodon piscivorus</i>
Spicebush Swallowtail	<i>Pterourus troilus</i>	Twin-spot Skipper	<i>Oligoria maculata</i>	Anhinga	<i>Anhinga anhinga</i>
Cabbage White	<i>Pieris rapae</i>	Ocola Skipper	<i>Panoquina ocola</i>	Yellow-crowned Night-Heron	<i>Nyctanassa violacea</i>
Cloudless Sulphur	<i>Phoebis sennae</i>	Abbot's Bagworm Moth	<i>Oiketicus abbotii</i>	Great Egret	<i>Ardea alba</i>
Southern Oak Hairstreak	<i>Satyrium favonius favonius</i>	Azalea Hand-maid Moth	<i>Datana major</i>	Wood Duck	<i>Aix sponsa</i>

Turkey Vulture
Cathartes aura

Mississippi Kite
Ictinia mississippiensis

Swallow-tailed Kite
Elanoides forficatus

Red-tailed Hawk
Buteo jamaicensis

Wild Turkey
Meleagris gallopavo

Mourning Dove
Zenaidura macroura

Yellow-billed Cuckoo
Coccyzus americanus

Barred Owl
Strix varia

Chuck-will's-widow
Antrostomus carolinensis

Ruby-throated Hummingbird
Archilochus colubris

Red-bellied Woodpecker
Melanerpes carolinus

Red-headed Woodpecker
Melanerpes erythrocephalus

Northern Flicker
Colaptes auratus

Downy Woodpecker
Dryobates pubescens

Red-cockaded Woodpecker
Dryobates borealis

Pileated Woodpecker
Dryocopus pileatus

Great Crested Flycatcher
Myiarchus crinitus

Eastern Wood-pewee
Contopus virens

American Crow
Corvus brachyrhynchos

Tufted Titmouse
Baeolophus bicolor

Brown-headed Nuthatch
Sitta pusilla

Carolina Wren
Thryothorus ludovicianus

Blue-gray Gnatcatcher
Poliophtila caerulea

Eastern Bluebird
Sialia sialis

Brown Thrasher
Toxostoma rufum

White-eyed Vireo
Vireo griseus

Prothonotary Warbler
Protonotaria citrea

Hooded Warbler
Setophaga citrina

Yellow-throated Warbler
Setophaga dominica

Prairie Warbler
Setophaga discolor

Pine Warbler
Setophaga pinus

Louisiana Waterthrush
Parkesia motacilla

Ovenbird
Seiurus aurocapillus

Common Yellowthroat
Geothlypis trichas

Northern Cardinal
Cardinalis cardinalis

Indigo Bunting
Passerina cyanea

Blue Grosbeak
Passerina caerulea

Eastern Towhee
Pipilo erythrophthalmus

Bachman's Sparrow
Peucaea aestivalis

Chipping Sparrow
Spizella passerina

Summer Tanager
Piranga rubra

Nine-banded Armadillo
Dasypus novemcinctus

Eastern Cottontail
Sylvilagus floridanus

Eastern Gray Squirrel
Sciurus carolinensis

Southern Fox Squirrel
Sciurus niger niger

White-tailed Deer
Odocoileus virginianus