



SCAN *South Carolina Association of Naturalists*

Post Office Box 5651, Columbia, South Carolina 29250-5651

July 2021

Hello SCAN members!

Our June outing to Ninety Six National Historic Site was well-attended, with a mix of familiar and new faces. The day was gorgeous, starting with temperatures in the low 80ies and partly cloudy skies. The park rangers posted a sign stating that the day's relative humidity was 60%, resulting in a predicted heat index of 91. In great contrast to our May outing, the annoying types of biting bugs were much less prevalent.



Attendees included:

Barbara Foster	Dick Watkins	Lee Morris	Rusty Wilson
Becky Brown	Gene Ott	Marcie Wedding	Stuart Greeter
Bill Wedding	Hugh Martin	Mary Garland	Terri Martin
Carol Gist	Joe Long	Douglass	Timothy Campbell
Carson Johnson	Johannes Stratmann	Paul Kalbach	Todd Johnston
Claudia Stratmann	Julianna Nyikos	Peter Nyikos	Tom Jones
Dave Schuetrum	Kathy Boyle	Philoma Skipper	
David Campbell	Kim McManus	Rita Zollinger	

Western Regional Director Lee Morris kicked off the morning with an informative group gathering. She highlighted several historical features of the park, including the Star Fort and the original site of the town of Ninety Six. A quick summary of the various trail options was provided, and the group scattered to go exploring.

Many folks started on the one-mile Walking Tour loop that winds through open fields featuring remnants of siege and communication trenches, fortifications and Star Fort. There is also an observation tower, a cannon and a reconstructed rifle tower. Along the way, we observed birds in the tree line and in the fields. There were also many pollinators flitting among a variety of wildflowers.



L to R: Summer Tanager, reconstructed rifle tower, bee on American Wild Carrot

Different groups explored the Gouedy Trail or took cars directly to the Star Fort Pond. My group walked part of the Cherokee Path Trail from the Walking Tour Trail to Star Fort Pond. The path was shaded, with a variety of flora. It intersected with several equestrian trails and the Gouedy Trail, resulting in several stops to consult the assorted maps we had between us.



L to R: Bicolored Ant-mimic Ground Spider, Spotted St. John's Wort, Arrow-shaped Orbweaver, Carolina Ruellia

We finally arrived at the pond, only to discover several SCAN members had beaten us there by the expedient method of driving around to the secondary parking lot by the boat landing! The grassy field around the pond attracted a few butterflies. The water's edge yielded a nice variety of plants and dragonflies.



L to R: exploring the edges, Two-striped Forcetail, Common Jewelweed

For our July outing, we're heading to Pickens County in the hopes that the temperatures in the Blue Ridge foothills are a little cooler than other areas of the state. With a variety of trails to choose from, there is a little something for everyone.

See you on the trail!

Kim McManus

Nine Times Preserve/Nine Times Forest
Pickens County
July 24, 2021

This month we are traveling up to Pickens County in the foothills of the Blue Ridge to Nine Times Preserve and Nine Times Forest. These two natural areas are continuous and might be thought of one area, but they are owned and managed by two different organizations: Nine Times Preserve (south of E Preston McDaniel Rd) is owned and managed by The Nature Conservancy (and is a designated SC Wildlife Management Area). Nine Times Forest (north of E Preston McDaniel Rd) is owned and managed by Naturaland Trust. The properties together cover 2200 acres where the Upper Piedmont and Blue Ridge regions meet, and are thus comprised of small, granitic outcroppings (a number of small mountains), seven different forest types, and a few creeks. A large variety of plants, animals, and fungi can be found in the area, and scenic views of the upstate can be viewed from the tops of some of the mountains.

The two areas have a number of trails that network together. Many trail destinations are the tops of the mountains which can involve some strenuous/steep climbing, but there are a couple of shorter trails that follow creeks that do not involve climbing. The climbs on the mountain trails can include scrambles over large boulders or between large outcroppings as well as steep slopes, although hikes just up to the steep portions can be very interesting to naturalists, so climbing would not be necessary to enjoy the mountain trails, although it will be less likely to observe panoramic views. Trails are generally well marked with round disc trail markers or ribbons tied to trees. Some smaller trails branch from the marked trails but can lead to private property, so make sure to stick to marked trails.

Some of the trails:

Big Rock Mountain Trail – 2.2 mile out-and-back (although you can make a loop at the top of the mountain if you want to continue); moderate difficulty but has some steepness and rock scrabbling as it nears the top

Rocky Bald and Cedar Rock Mountain Trail – about 4 miles; the Cedar Rock Trail is out-and-back, but at the end you can join the Rocky Bald Trail which is a large loop. The Rocky Bald Trail can be done separately from the (smaller) Rocky Bald Parking Area. Moderate difficulty; should be nice view from the Bald (trail branches from the Loop)

Appalachian Lumber Trail – easy out-and-back trail, about 2.3 miles. Follows a creek, but also close to the road. There is a small (2-car) parking area at the western end if out-and-back is not your style.

Big Rock Mountain and Pink Mountain via Naturaland – 6.7 miles (two connected trails), partially a loop, and partially out-and-back. Big Rock Mountain Trail is steep and involves boulder-scrabbling; Pink Mountain has some steep portions and is reportedly a bit overgrown.

Online, I have not found a very detailed comprehensive map of the trails, but there are very good maps posted at kiosks at the trailheads. There are a number of parking lots; the biggest lot for access of both the Preserve and the Forest is at the junction of E Preston McDaniel Rd and Nine Times Creek Rd, although that gravel lot probably cannot hold more than 15 vehicles and we will be sharing the area with the general public. For the beginning introductions, we will meet at a slightly bigger parking lot off of the western side of Big Rock Lake Rd, which is accessed from E Preston McDaniel Rd and loops around Big Rock Lake. Since this area is very far upstate and there is still COVID-19 to consider, we will not meet as a group for supper after our wanderings.

*There are no facilities at this site. Also, cell phone signals tend to disappear a couple miles before you reach Nine Times, so plan accordingly. If you wander/soodle/womble up a mountain trail, though, you will probably regain the signal with the altitude.

Lee Morris

Directions:

According to my Map App on my iPhone (so take it with a grain of salt), the GPS address for this parking lot is 269 Big Rock Lake Rd, Pickens, SC 29671

The main way to Nine Times (Pickens County in general) in South Carolina is to take I-26 to exit 5 at Campobello. This is Highway 11 (west) which goes to a number of natural areas in Pickens County, including Caesars Head, Table Rock, and Jocassee Gorges. You will need to drive (west) past the entrance to Table Rock State Park to get to Nine Times Preserve and Forest.

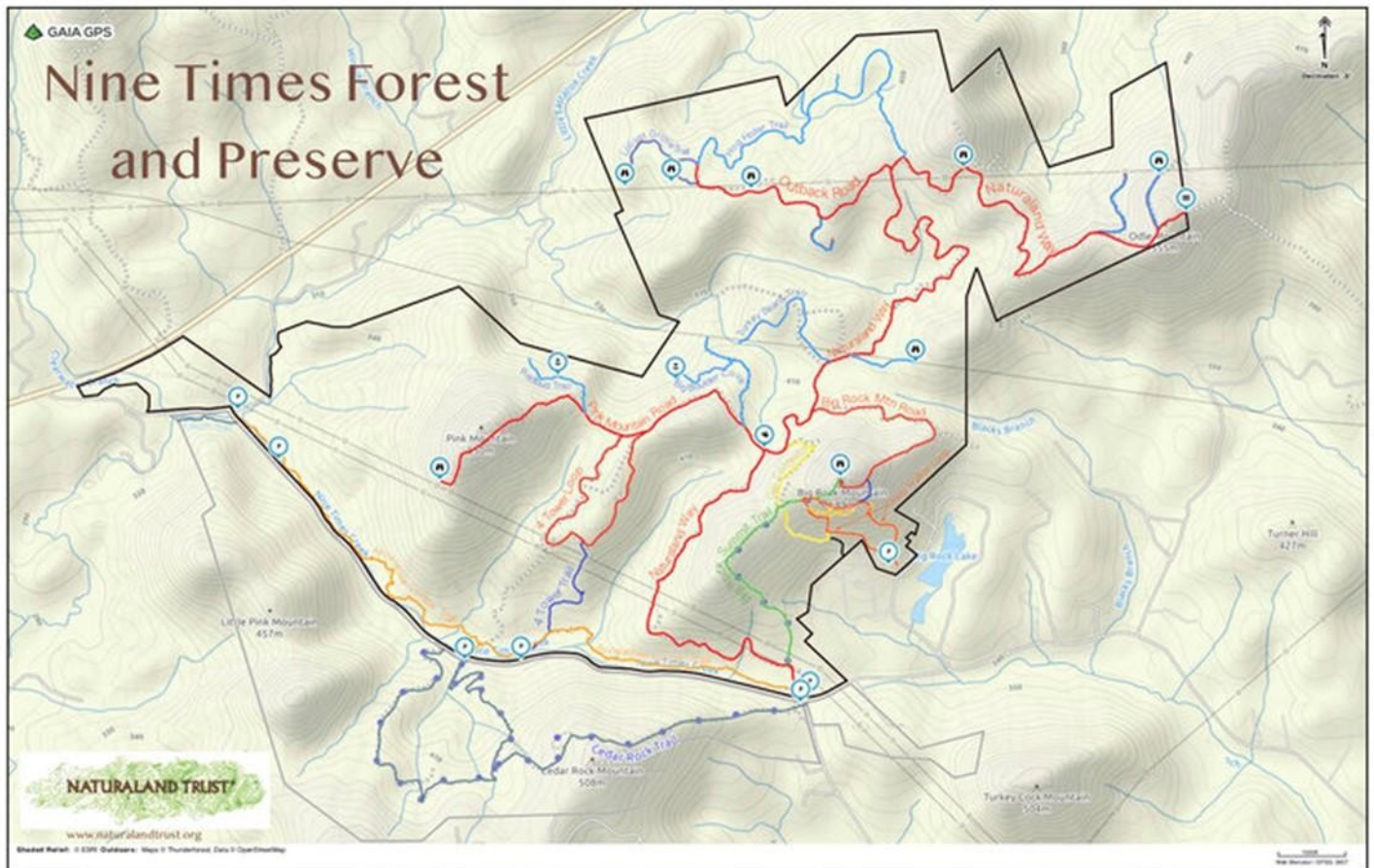
From Highway 11 going west (away from Greenville toward Oconee County)

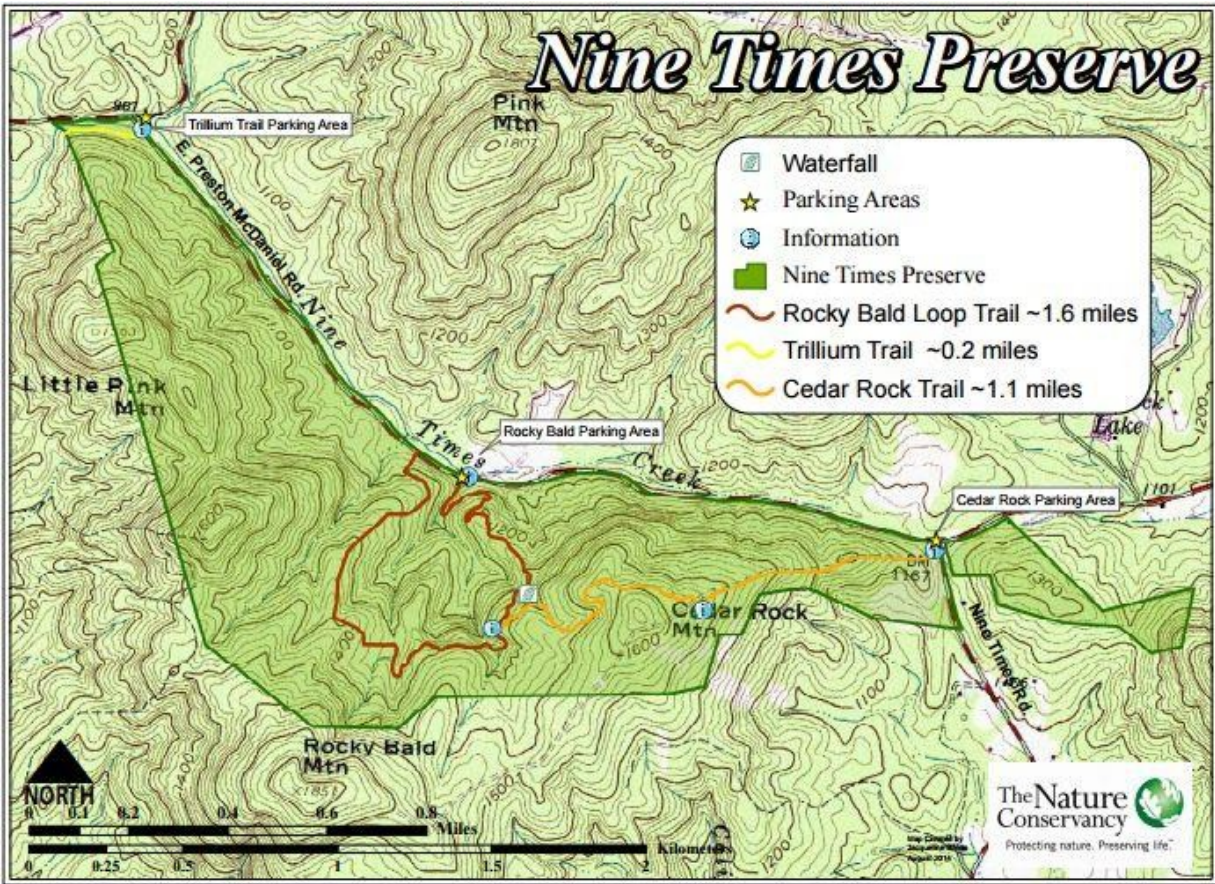
- At the Highway 11 and Highway 178 intersection continue west on Highway 11 for 4.7 miles
- Turn left (south) on Eastatoee Creek Road (note: do not turn at the first Eastatoee Creek Road at 2.7 miles)
- Once on Eastatoee Creek Road you will see Antioch Baptist Church on the right. Go past the church for 0.5 mile to the E Preston McDaniel Road intersection.
- Follow E Preston McDaniel Rd to the intersection with Nine Times Creek Rd. This is where one of the bigger, more central parking lots. *We are not meeting here for the introductions.*
- Continue on E Preston McDaniel Rd for approximately 0.4 miles. Big Rock Lake Rd is on the left. Turn here and continue straight for 0.4 miles.
- The parking lot will be on the left.

According to my Map App on my iPhone (so take it with a grain of salt), the GPS address for this parking lot is 269 Big Rock Lake Rd, Pickens, SC 29671

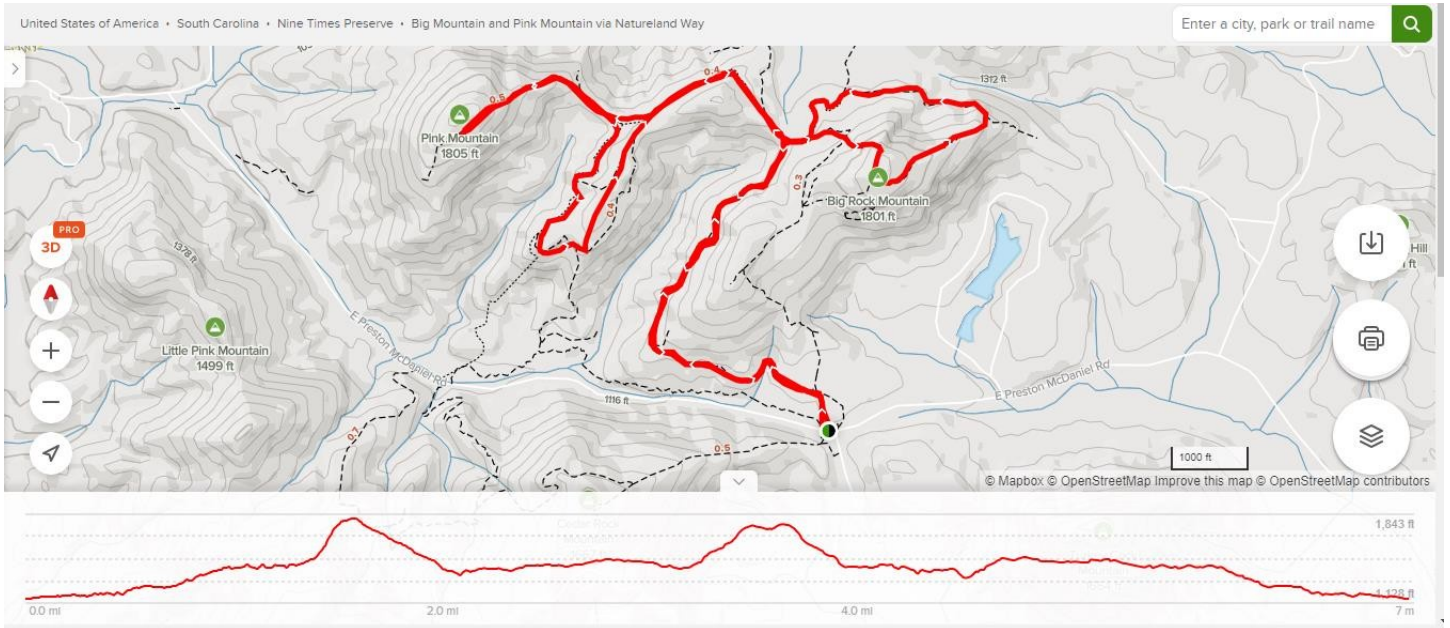
A good website for trails:

<https://www.sctrails.net/trails/trail/nine-times-preserve>



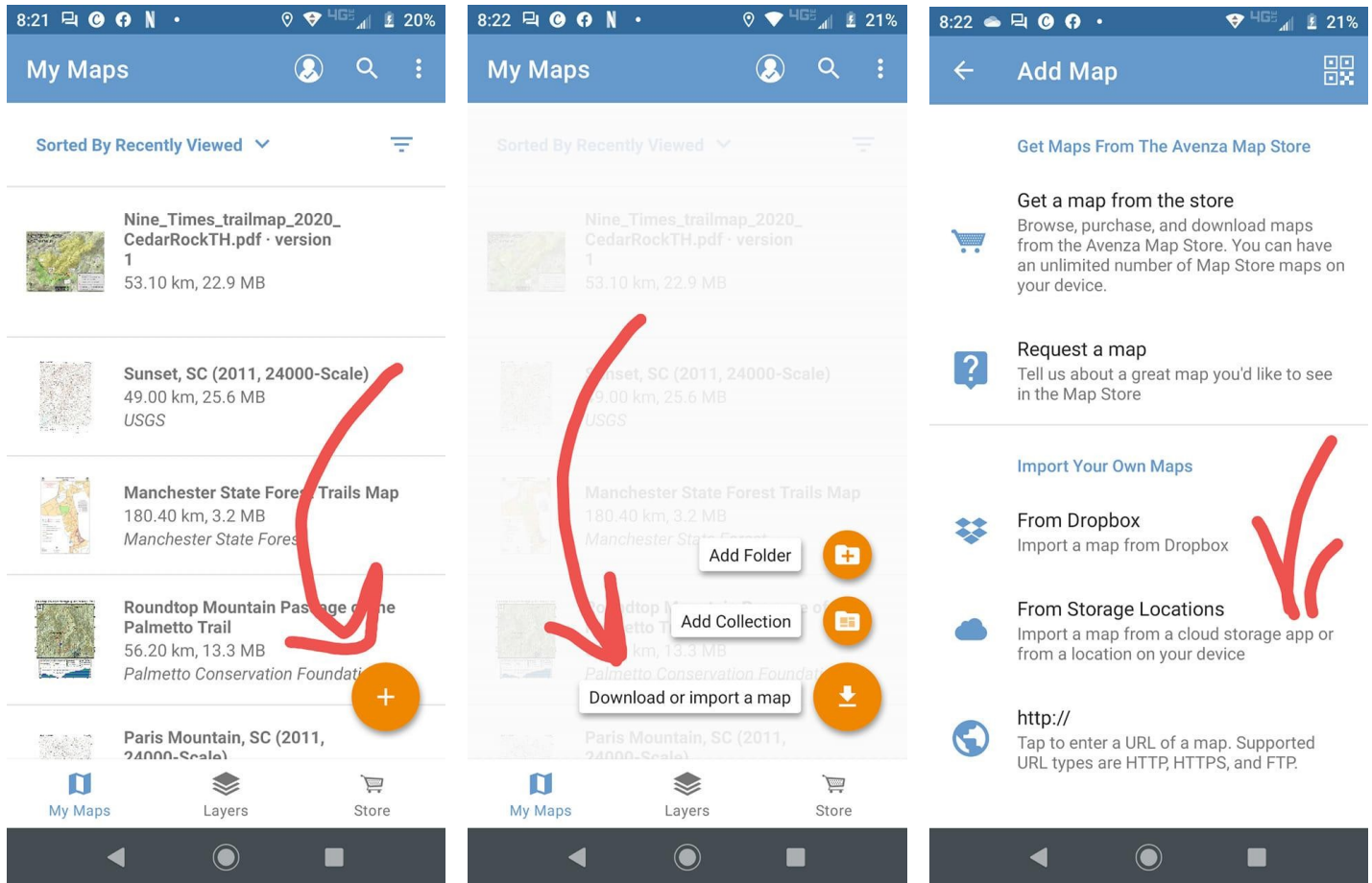


Big Rock Mountain (right loop) and Pink Mountain (left loop and out-and-back) from the E Preston McDaniel Rd/Nine Times Rd parking area (start area at the bottom).



Avenza App instructions

If you prefer digital maps, consider installing the free Avenza app. Phillip Harpootlian has provided a trail map of Nine Times Preserve that you can download and reference during your visit. Once you've installed the Avenza app, follow these steps: download the attached pdf to your phone, open Avenza and click the Plus button, select Download or import a map, and choose From Storage Locations. This will put the map in your app.



**Ninety Six National Historic Site
Greenwood Co., SC
June 26, 2021**

This list was produced by SCAN from sightings produced by SCAN members and is subject to revision as needed. An asterisk (*) indicates a new sighting for SCAN. Send any changes or corrections to Tom Jones tomjones@scan.org
Please indicate exactly to which flora/fauna list you are referring. Thank you.

FLORA

Common Running-cedar

Diphasiastrum digitatum

Rattlesnake Fern

Botrypus virginianus

Eastern Mosquito Fern

Azolla caroliniana

Ebony Spleenwort

Asplenium platyneuron

Sensitive Fern

Onoclea sensibilis

Netted Chain Fern

Lorinseria areolata

Christmas Fern

Polystichum acrostichoides

Resurrection Fern

Pleopeltis michauxiana

Loblolly Pine

Pinus taeda

Eastern Red Cedar

Juniperus virginiana

Tulip-tree

Liriodendron tulipifera

Southern Magnolia

Magnolia grandiflora

Common Pawpaw

Asimina triloba

Sassafras

Sassafras albidum

Green Arrow-arum

Peltandra virginica

Catbrier

Smilax bona-nox bona-nox

Common Greenbrier

Smilax rotundifolia

Downy Rattlesnake-orchid

Goodyera pubescens

Blackberry-lily

Iris domestica

Lawn Blue-eyed-grass

Sisyrinchium rosulatum

Field Garlic

Allium vineale

Yucca

Yucca sp.

Common Rush

Juncus effusus solutus

Path Rush

Juncus tenuis

Giant Cane

Arundinaria gigantea

River Oats

Chasmanthium latifolium

Poverty Oat-grass

Danthonia spicata

Common Bottlebrush Grass

Elymus hystrix hystrix

Common Eastern Wild-rye

Elymus virginicus

Japanese Stilt-grass

Microstegium vimineum

Woods-grass

Oplismenus setarius

Johnson Grass

Sorghum halepense

Moonseed

Menispermum canadense

Coralbeads

Nephroia carolina

Sweet Gum

Liquidambar styraciflua

Muscadine

Muscadinia rotundifolia rotundifolia

Summer Grape

Vitis aestivalis aestivalis

Virginia-creeper

Parthenocissus quinquefolia

Mimosa

Albizia julibrissin

Common Groundnut

Apios americana

Eastern Redbud

Cercis canadensis

Tick-trefoil

Desmodium paniculatum paniculatum

Honey Locust

Gleditsia triacanthos

Sericea Lespedeza

Lespedeza cuneata

Pencil-flower

Stylosanthes biflora

Rabbitfoot Clover

Trifolium arvense

White Clover

Trifolium repens

Southern Agrimony

Agrimonia parviflora

White Avens

Geum canadense

Cream Avens

Geum virginianum

Taiwanese Redtip

Photinia serratifolia

Running Five-fingers

Potentilla canadensis

Eastern Wild Black Cherry

Prunus serotina serotina

Oriental Silverleaf

Elaeagnus umbellata

Carolina Buckthorn

Frangula caroliniana

Winged Elm

Ulmus alata

American Elm

Ulmus americana

Slippery Elm

Ulmus rubra

Southern Hackberry

Celtis laevigata

White Mulberry

Morus alba

Red Mulberry

Morus rubra

False-nettle

Boehmeria cylindrica

White Oak

Quercus alba

Southern Red Oak

Quercus falcata

Swamp Chestnut Oak

Quercus michauxii

Water Oak

Quercus nigra

Oglethorpe Oak

Quercus oglethorpensis

Cherrybark Oak

Quercus pagoda

Willow Oak

Quercus phellos

Black Oak

Quercus velutina

Pignut Hickory

Carya glabra

Pecan

Carya illinoensis

Black Walnut

Juglans nigra

American Hornbeam

Carpinus caroliniana

Hearts-a-burstin'-with-love

Euonymus americanus

St. Andrew's Cross

Hypericum hypericoides

Dwarf St.-John's-wort

Hypericum mutilum

Spotted St.-John's-wort
Hypericum punctatum
Passionflower
Passiflora incarnata
Eastern Cottonwood
Populus deltoides deltoides
Black Willow
Salix nigra
Common Water-purslane
Ludwigia palustris
Winged Sumac
Rhus copallinum
Eastern Poison Ivy
Toxicodendron radicans radicans
Southern Sugar Maple
Acer floridanum
Eastern Box Elder
Acer negundo negundo
Eastern Red Maple
Acer rubrum rubrum
Chinaberry
Melia azedarach
Knotweed
Polygonum sp.
Flowering Dogwood
Benthamidia florida
Spotted Touch-me-not
Impatiens capensis
American Persimmon
Diospyros virginiana
Water-pimpernel
Samolus parviflorus
Pipsissewa
Chimaphila maculata
Buttonbush
Cephalanthus occidentalis
Large Buttonweed
Diodia virginiana
Hairy Bedstraw
Galium pilosum
Blue Field-madder
Galium sherardia
One-flowered Bedstraw
Galium uniflorum
Indian-hemp
Apocynum cannabinum
Eastern Anglepod
Gonolobus suberosus suberosus
Clasping Heliotrope
Heliotropium amplexicaule
Carolina Horse-nettle
Solanum carolinense carolinense
Green Ash
Fraxinus pennsylvanica
Chinese Privet
Ligustrum sinense
English Plantain
Plantago lanceolata
American Mistletoe
Phoradendron leucarpum leucarpum

Carolina Wild-petunia
Ruellia caroliniensis
Cross-vine
Bignonia capreolata
Brazilian Vervain
Verbena brasiliensis
Beautyberry
Callicarpa americana
Self-heal
Prunella vulgaris
Lyreleaf Sage
Salvia lyrata
Narrowleaf Skullcap
Scutellaria integrifolia
Chinese Holly
Ilex cornuta
Poosum-haw
Ilex decidua
Nodding Thistle
** Carduus nutans*
Leafy Elephant's-foot
Elephantopus carolinianus
Common Elephant's-foot
Elephantopus tomentosus
Common Rough Fleabane
Erigeron strigosus strigosus
Beaked Hawkweed
Hieracium gronovii
Oxeye Daisy
Leucanthemum vulgare
Climbing Hempweed
Mikania scandens
Southern Crownbeard
Verbesina occidentalis
Common Elderberry
Sambucus canadensis
Black Haw
Viburnum prunifolium
Japanese Honeysuckle
Lonicera japonica
Coralberry
Symphoricarpos orbiculatus
Marsh-parsley
Cyclosporum leptophyllum
Water-hemlock
Cicuta maculata maculata
Honewort
Cryptotaenia canadensis
Queen-Anne's-lace
Daucus carota carota
Eastern Bishopweed
Ptilimnium capillaceum
Sanicle
Sanicula canadensis
Jellied False Coral
Tremellodendron schweinitzii
American Caesar
Amanita jacksonii
Old-man-of-the-woods
Strobilomyces floccopus
Green Russula
** Russula subgraminicolor*

Golden-gilled Gerronema
** Gerronema strombodes*
Red Raspberry Slime
Tubifera ferruginosa

FAUNA

Trapdoor Spider
Ummidia sp.
Spiny-backed Spider
Micrathena gracilis
Arrow-shaped Spiny-back
Micrathena sagittata
Labyrinth Orbweaver
Metepeira labyrinthea
Long-jawed Orbweaver
Tetragnatha sp.
Orchard Orbweaver
Leucauge venusta
Grass Spider
Agelenopsis sp.
Rabid Wolf Spider
Rabidosa rabida
Green Lynx Spider
Peucetia viridans
Bicolored Ant-mimic Spider
** Sergiolus bicolor*
Ground Crab Spider
Xysticus sp.
Woodland Jumper
Colonus sylvanus
Black Cherry Leaf Gall Mite
Eriophyes cerasicrumena
Stink Bug
Mormidea lugens
Thread-legged Bug
Emesaya brevipennis
Ichneumon Wasp
** Limonethe maurator*
Spongy Oak Apple Gall (Wasp)
Amphibolips confluenta
Common Eastern Velvet-ant
Dasymutilla occidentalis occidentalis
Southern Yellowjacket
Vespa squamosa
Mole Cricket Hunter
** Larra analis*
Sculptured Resin Bee
Megachile sculpturalis
Eastern Carpenter Bee
Xylocopa virginica
Bumblebee
Bombus impatiens
American Bumblebee
Bombus pensylvanicus
Honey Bee
Apis mellifera
Margined Calligrapher
** Toxomerus marginatus*

Yellowjacket Hoverfly
Milesia virginiensis

Two-striped Forceptail
Aphylla williamsoni

Eastern Pondhawk
Erythemis simplicicollis

Slaty Skimmer
Libellula incesta

Widow Skimmer
Libellula luctuosa

Blue Dasher
Pachydiplax longipennis

Eastern Amberwing
Perithemis tenera

Common Whitetail
Plathemis lydia

Ebony Jewelwing
Calopteryx maculata

Blue-fronted Dancer
Argia apicalis

Double-striped Bluet
* *Enallagma basidens*

Fragile Forktail
Ischnura posita

Six-spotted Tiger Beetle
Cicindela sexguttata

Pedunculate Ground Beetle
Pasimachus sp.

Flat-horned Ground Beetle
* *Helluomorphoides nigripennis*

Scarab Beetle
Macrodactylus subspinosus

Shining Leaf Chafer
Anomala marginata

Japanese Beetle
Popillia japonica

Click Beetle
* *Megapenthes limbalis*

Cylindrical Leaf Beetle
* *Bassareus clathratus*

Swamp Milkweed Beetle
Labidomera clivicollis

Sleepy Orange
Abaeis nicippe

Eastern Tailed-blue
Cupido comyntas

American Snout
Libytheana carinenta

Pearl Crescent
Phyciodes tharos

Common Buckeye
Junonia coenia

Red-spotted Purple
Limenitis arthemis

Tawny Emperor
Asterocampa clyton

Carolina Satyr
Hermeuptychia sosybius

Fiery Skipper
Hylephila phyleus

Banded Tussock Moth
Halysidota tessellaris

Fowler's Toad
Anaxyrus fowleri

Northern Cricket Frog
Acris crepitans

Cope's Gray Treefrog
Hyla chrysoscelis

Green Treefrog
Hyla cinerea

Squirrel Treefrog
Hyla squirella

Green Frog
Lithobates clamitans

Eastern Musk Turtle
Sternotherus odoratus

Green Heron
Butorides virescens

Great Blue Heron
Ardea herodias

Canada Goose
Branta canadensis

Wood Duck
Aix sponsa

Turkey Vulture
Cathartes aura

Red-shouldered Hawk
Buteo lineatus

Osprey
Pandion haliaetus

Yellow-billed Cuckoo
Coccyzus americanus

Barred Owl
Strix varia

Ruby-throated Hummingbird
Archilochus colubris

Red-bellied Woodpecker
Melanerpes carolinus

Red-headed Woodpecker
Melanerpes erythrocephalus

Northern Flicker
Colaptes auratus

Downy Woodpecker
Dryobates pubescens

Great Crested Flycatcher
Myiarchus crinitus

Eastern Wood-pewee
Contopus virens

Eastern Phoebe
Sayornis phoebe

Acadian Flycatcher
Empidonax virescens

Bank Swallow
Riparia riparia

Barn Swallow
Hirundo rustica

Blue Jay
Cyanocitta cristata

American Crow
Corvus brachyrhynchos

Fish Crow
Corvus ossifragus

Tufted Titmouse
Baeolophus bicolor

Carolina Chickadee
Poecile carolinensis

Brown-headed Nuthatch
Sitta pusilla

Carolina Wren
Thryothorus ludovicianus

Eastern Bluebird
Sialia sialis

Wood Thrush
Hylocichla mustelina

Northern Mockingbird
Mimus polyglottos

Brown Thrasher
Toxostoma rufum

Blue-headed Vireo
Vireo solitarius

Red-Eyed Vireo
Vireo olivaceus

Black-and-white Warbler
Mniotilta varia

Northern Parula
Setophaga americana

Yellow-throated Warbler
Setophaga dominica

Northern Cardinal
Cardinalis cardinalis

Indigo Bunting
Passerina cyanea

Eastern Towhee
Pipilo erythrophthalmus

Chipping Sparrow
Spizella passerina

Eastern Meadowlark
Sturnella magna

Brown-headed Cowbird
Molothrus ater

Summer Tanager
Piranga rubra

Nine-banded Armadillo
Dasypus novemcinctus

Eastern Gray Squirrel
Sciurus carolinensis

American Beaver
Castor canadensis

American Raccoon
Procyon lotor

White-tailed Deer
Odocoileus virginianus