



SCAN *South Carolina Association of Naturalists*

Post Office Box 5651, Columbia, South Carolina 29250-5651

June 2020

Hello Fellow SCAN Members!

With our March and April outings cancelled due to COVID-19 concerns and location closures, it was good to gather once again for our May outing. We joined the Under a Lowcountry Moon group in exploring various portions of the Francis Marion National Forest (FMNF). Thank you to everyone who came out and respected each person's social distancing parameters. As our usual group photo wasn't feasible, Jerry Bright utilized his drone to capture a fun image of us staged along Hell Hole Road. Our attendees included:

Ab Abercrombie	Cynthia Giles	Jerry Bright	Marcus Sizemore	Stephen Crotts
Alison Smith	Eddie Hade	Joey Holmes	Mike Gibbons	Stephen Prior
Barbara Foster	Greg Ross	Kathy Boyle	Parker Gibbons	Tess Moody
Ben Morrison	Hal Giles	Ken Carman	Patrick Hade	Todd Johnston
Ben Stegenga	Jackie Burns	Kim McManus	Paul Kalbach	
Chris Hope	Jennifer Fill	Mandy Johnson	Sharon Yomtob	



The weekend began early Thursday afternoon, with several folks setting up camp on private property at Rice Hope Plantation on the Cooper River. We did a little bit of light exploring of a few dirt roads in the FMNF and enjoyed the sunset at camp.



Campsites along the waterline overlooked old rice fields and the occasional brightly-lit boat of nighttime giggers.

Friday started off a little foggy, with temperatures in the low 70ies that steadily climbed to the low 90ies with passing showers. We started road cruising early. Almost immediately, we stumbled upon an amazing sound experience. Thousands of Southern Toads had gathered under a bridge on Irishtown Road and were in a mating frenzy. Everywhere we looked, the toads were in amplexus. Long strands of eggs were spotted in the water. The sound of their mating calls was so loud that, combined with the reverberation effects of the bridge, it was actually painful to the ears.



Southern Toads utilize a mating technique called amplexus, where the male grasps the female in a copulatory embrace with his upper arms and fertilizes the eggs as she releases them.

Another interesting Friday experience was encountering a researcher tagging Monarch Butterflies in the Wambaw Swamp Wilderness along Victor Lincoln Road. He was catching the butterflies with a net, gently placing them in wax envelopes, and taking them to his truck to apply lightweight stickers with numbers and QR codes. They were then safely released in the same area.



L to R: Brown Water Snake, tagged Monarch Butterfly, Swamp Rose in the Wambaw Swamp Wilderness.

The rest of Friday was spent road cruising, eating, helping new arrivals set up campsites, and generally enjoying the outdoors and catching up with friends. Ken Carman set up a light trap overnight at the Rice Hope campsite and photographed every moth that landed on the sheet.



We encountered several cottonmouths over the weekend (L). Ken Carman documented a variety of moths on his light traps Friday and Saturday nights (R).

Saturday, we gathered at our traditional Hell Hole campground site for a bit of socializing, then split up into groups to explore various areas of the FMNF. One group went in search of radio-tagged Eastern Diamondback Rattlesnakes and to check traps that had been set in a nearby swamp. Another group opted to road cruise. I went with the folks who wished to do more photography and light roadside exploring. We enjoyed finding large patches of water lilies beside Hell Hole Road, exploring several pitcher plant bogs along Farewell Corners and Halfway Creek Roads, and discovering some water snakes on Victor Lincoln Road. Due to the coronavirus concerns, we did not gather for dinner and instead opted to spend more time exploring. Parker Gibbons had a banner evening, finding a trifecta of water snakes including the very elusive Rainbow Snake. The weather was typical for later spring: highs in the low 90ies with afternoon thunderstorms and evening temperatures falling to around 70.



L to R: Pipevine Swallowtails on a roadside milkweed plant. Trumpet pitcher plants can be found in abundance at Florida Bay. Parker Gibbons with a Glossy Crayfish Snake, Mud Snake, and Rainbow Snake.

Sunday was very similar to Saturday, with a quick gathering at the Hell Hole campground and people splitting off into smaller groups for exploration and typical summer weather. I joined the search for an Eastern Diamondback Rattlesnake dubbed Ruby. After quite some time tromping through open pine savannah and a bit of swampy area with 2 radio antennae, we found Ruby curled up under some bushes. A return trip to the Florida Bay pitcher plant bog yielded a variety of frogs and insects.



L to R: Eastern Diamondback Rattlesnake. Pine Woods Treefrog on a trumpet pitcher plant. Little Eastern Grasshopper.

A few people stuck it out and did a little more exploring on Monday morning before we all packed up and headed back to civilization. An unusual find for the day was a chicken turtle, found by Parker Gibbons.

Thanks to all who came out and participated in our annual weekend camping adventure. We covered a lot of ground and found many interesting flora and fauna. As part of the agreement with the Forest Service to allow us to temporarily collect herpetofauna, we will send them our species list.

For our June outing, Dave Schuetrum will lead us on an exploration of Audubon Wannamaker Preserve in Calhoun County. He is the caretaker for the property and has a great working knowledge of both the natural and historic highlights. He has found a restaurant with outdoor seating for those who would like to stick around afterwards for dinner.

We look forward to seeing you!

Kim McManus

Audubon Wannamaker Preserve
Calhoun County, SC
Saturday, June 27, 2020 10:30am

Audubon Wannamaker Preserve located on Hwy 6 in Calhoun County is privately owned by the Columbia Audubon Society. It is approximately 530 acres in size and encompasses a variety of forest types. Lyons Creek flows through the middle of the property with little disturbance upstream. There are hills, valleys, seeps, and springs on the property. A trail system is in place, but I would recommend getting off some of the trails to see the real beauty of the land. The hardwood drains are superb with some black walnut and 150-year-old Loblolly Pine in places.

George Sterling was granted the property in 1705 and it was one of the first settlements in the area. The original Cherokee Trail traversed the property and Sterling established an outpost to trade with the Indians on the trail near Lyons Creek on the property. The land was last owned by John Wannamaker who farmed the property and had cattle. He had a love for the woods and willed it to be a preserve upon his death.

Jan Ciegler compiled a beetle list of over 640 species. There is a species of butterfly that has carnivorous caterpillars (help me butterfly people). Steve Bennett, a retired SCDNR Herpetologist, studied the seeps for amphibians. I am sure there is much more to be discovered. There is a pavilion with picnic tables as well as a restroom. There is no potable water so bring your own.

Directions

Coming from the west, the entrance is 4.6 miles east of St. Matthews on Hwy 6.
Coming from the east, the entrance is 17.5 miles from I-95 at Santee on Hwy 6.
GPS coordinates for the entrance: 33 38.149, 80 42.206.
There will be a SCAN sign at the gate.

Dinner

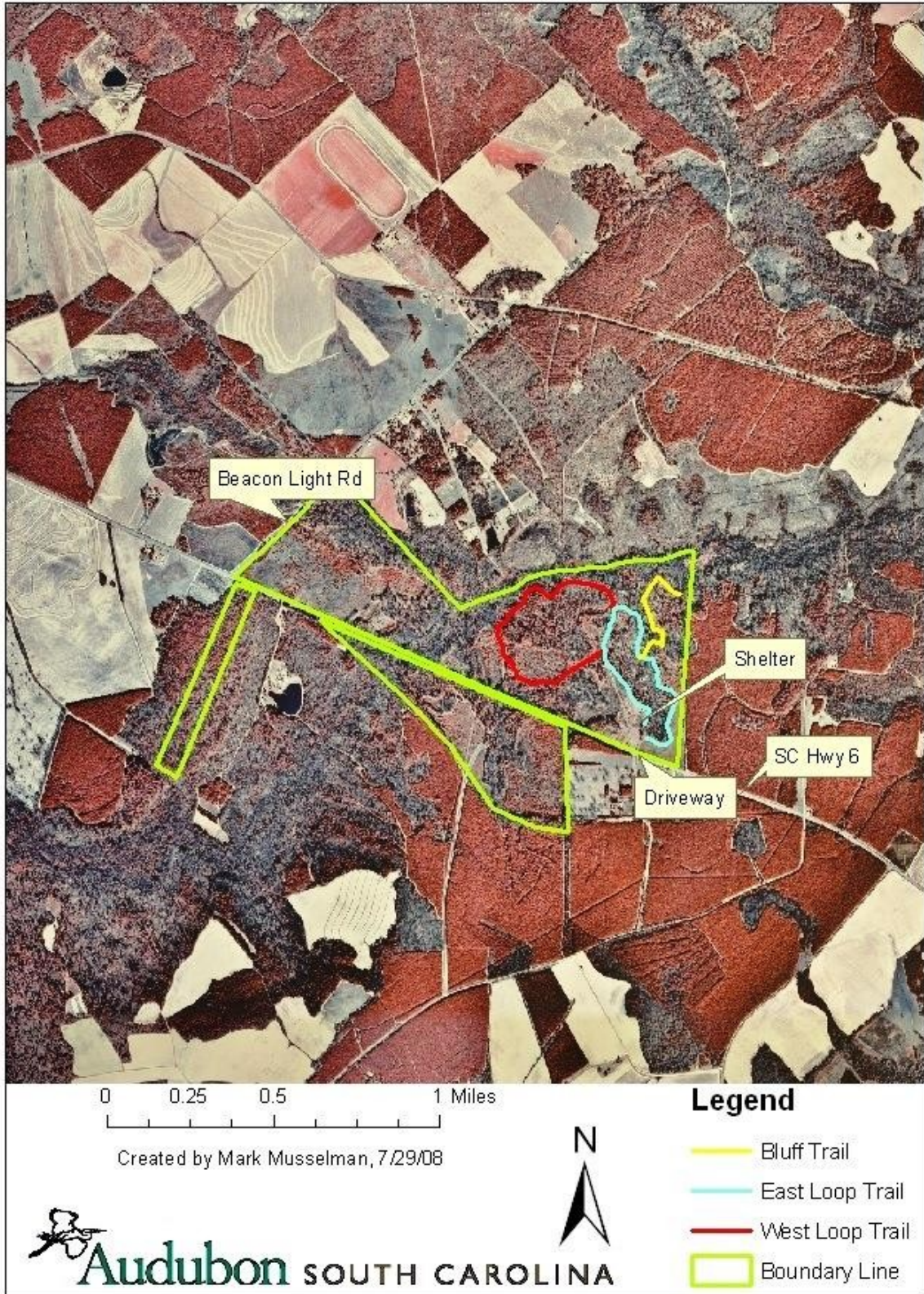
Dinner will be at the Thai House 2. They have outdoor seating and are vegetarian friendly. It is just on the east side of I-95 at Santee.

9086 Old Number Six Hwy
Santee, SC 29142
803-854-9060

https://www.tripadvisor.com/Restaurant_Review-g54430-d5327654-Reviews-Thai_House_II-Santee_South_Carolina.html
<https://www.santeethaihouse.com/menu>

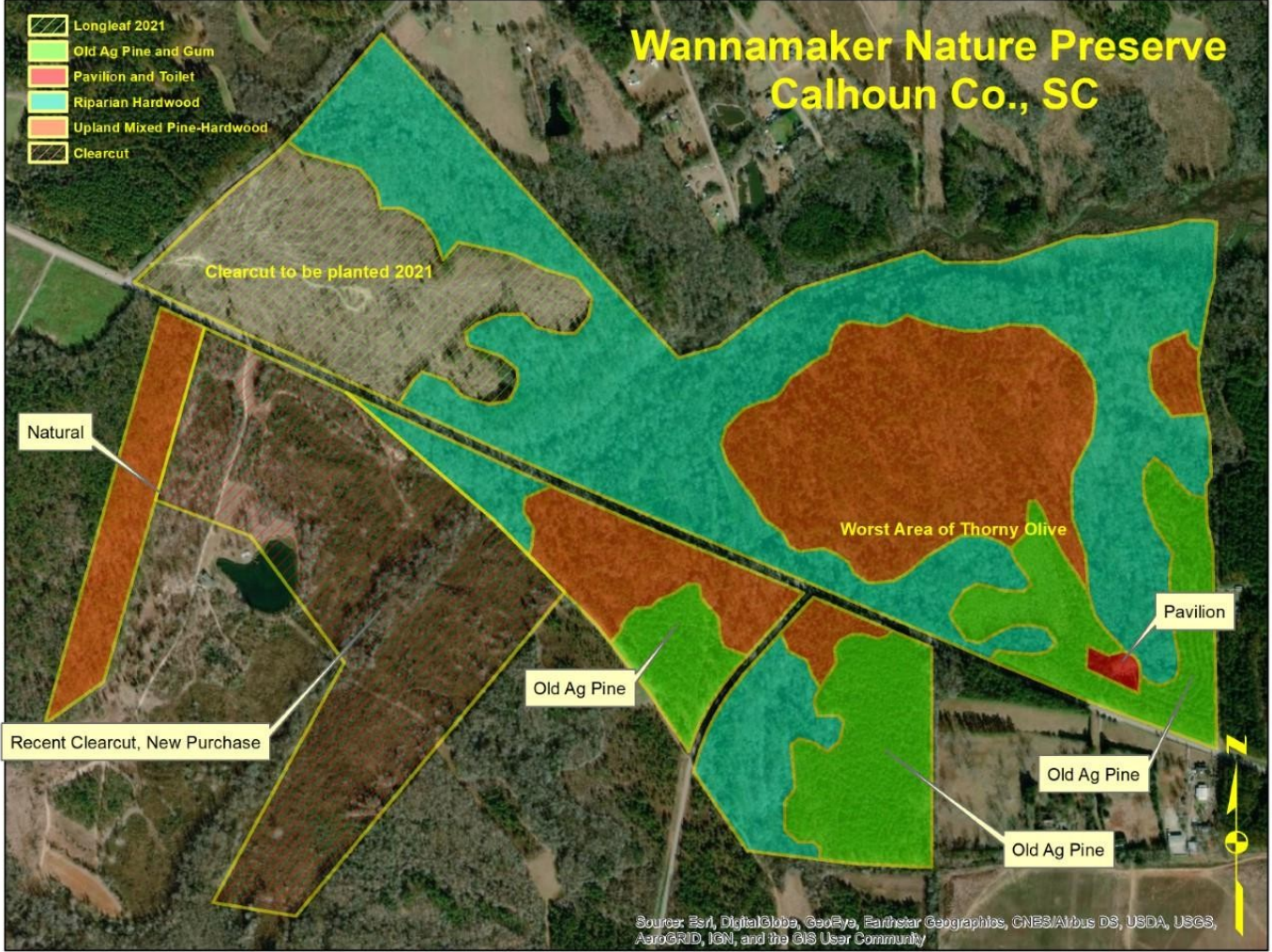
Dave Schuetrum
Vice President

Wannamaker Preserve



Wannamaker Nature Preserve Calhoun Co., SC

- Longleaf 2021
- Old Ag Pine and Gum
- Pavilion and Toilet
- Riparian Hardwood
- Upland Mixed Pine-Hardwood
- Clearcut



Hell Hole, Francis Marion Nat. Forest
Berkeley Co., SC
May 23, 2020

This list was produced by SCAN from sightings produced by SCAN members and is subject to revision as needed. An asterisk (*) indicates a new sighting for SCAN. Send any changes or corrections to Tom Jones _____
Please indicate exactly to which flora/fauna list you are referring. Thank you.

FLORA

Netted Chain Fern
Woodwardia areolata

Sensitive Fern
Onoclea sensibilis sensibilis

Longleaf Pine
Pinus palustris

Loblolly Pine
Pinus taeda

Pond-cypress
Taxodium ascendens

Dwarf Palmetto
Sabal minor

Golden Club
Orontium aquaticum

Toothache Grass
Ctenium aromaticum

Spanish-moss
Tillandsia usneoides

Pickerelweed
Pontederia cordata

Coastal Carolina Spiderlily
Hymenocallis crassifolia

Northern White Colic-root
Aletris farinosa

Savanna Iris
Iris tridentata

Southern Blue Flag
Iris virginica

Curlyleaf Yucca
Yucca filamentosa

Common Grass-pink
Calopogon tuberosus tuberosus

Rose Pogonia
Pogonia ophioglossoides

Large Spreading Pogonia
Cleistesiospis divaricata

Sweetbay
Magnolia virginiana

Swamp Bay
Persea palustris

Lizard's-tail
Saururus cernuus

White Water-lily
Nymphaea odorata odorata

Marsh Clematis
Clematis crispa

Sweet Gum
Liquidambar styraciflua

Winged Elm
Ulmus alata

Smallspike False-nettle
Boehmeria cylindrica

Common Wax-myrtle
Morella cerifera

Live Oak
Quercus virginiana

Peelbark St.-John's-wort
Hypericum fasciculatum

Yellow Pitcherplant
Sarracenia flava

Hooded Pitcherplant
Sarracenia minor minor

Water Sundew
Drosera intermedia

Ti-ti
Cyrilla racemiflora

Staggerbush
Lyonia mariana

Horsesugar
Symplocos tinctoria

Indian-strawberry
Potentilla indica

Swamp Rose
Rosa palustris

Coral Bean
Erythrina herbacea

Water Tupelo
Nyssa aquatica

Virginia-creeper
Parthenocissus quinquefolia

Showy Milkwort
Polygala grandiflora grandiflora

Orange Milkwort
Polygala lutea

Eastern Red Maple
Acer rubrum rubrum

Eastern Poison Ivy
Toxicodendron radicans radicans

Few-flower Milkweed
Asclepias lanceolata

Butterfly-weed
Asclepias tuberosa

Horse-nettle
Solanum carolinense carolinense

Brazilian Vervain
Verbena brasiliensis

Lobelia
Lobelia boykinii

Common Yellow Thistle
Cirsium horridulum horridulum

Pool Coreopsis
Coreopsis falcata

Calliopsis
Coreopsis tinctoria tinctoria

Boneset
Eupatorium perfoliatum

Bitterweed
Helonium amarum amarum

Black-eyed Susan
Rudbeckia hirta

Southern Crownbeard
Verbesina occidentalis

FAUNA

Elongate Cannibal Snail
Euglandia rosea

Brownish-gray Fishing Spider
Dolomedes tenebrosus

Green Lynx Spider
Peuceitia viridans

Brilliant Jumper
Phidippus clarus

Southeast Lubber Grasshopper
Romalea microptera

Little Eastern Grasshopper
* *Eotettix pusillus*

Round-winged Katydid
Amblycorypha oblongifolia

Antlion
* Family Myrmeleontidae

Green Horse Fly
* *Chlorotabanus crepuscularis*

Long-legged Fly
* Family Dolichopodidae

Painted Skimmer
Libellula semifasciata

E. Pinebarrens Tiger Beetle
Cicindela abdominalis

Carrion Beetle
Necrophila americana

Eastern Tiger Swallowtail
Papilio glaucus

Spicebush Swallowtail
Papilio troilus

Palamedes Swallowtail
Papilio palamedes

Pearl Crescent (butterfly)
Phyciodes tharos

Monarch (butterfly)
Danaus plexippus

Common Checkered-skipper
Pyrgus communis

Fiery Skipper
Hylephila phyleus

Grapeleaf Skeletonizer Moth*Harrisina americana***Confused Eusarca Moth***Eusarca confusaria***Tersa Sphinx Moth***Xylophanes tersa***Double-lined Prominent*** *Lochmaeus bilineata***Pitcher Plant Moth***Exyra* sp.**Two-toed Amphiuma***Amphiuma means***Dwarf Salamander***Eurycea quadridigitata***Oak Toad***Anaxyrus quercicus***Southern Toad***Anaxyrus terrestris***Eastern Narrowmouth Toad***Gastrophryne carolinensis***Southern Cricket Frog***Acris gryllus***Green Treefrog***Hyla cinerea***Pine Woods Treefrog***Hyla femoralis***Southern Chorus Frog***Pseudacris nigrata***Little Grass Frog***Pseudacris ocularis***Bullfrog***Lithobates catesbiana***Green Frog***Lithobates clamitans***Pig Frog***Lithobates grylio***Carpenter Frog***Lithobates virgatipes***Southern Leopard Frog***Lithobates utricularia***American Alligator***Alligator mississippiensis***Spotted Turtle***Clemmys guttata***Chicken Turtle***Deirochelys reticularia***Box Turtle***Terrapene carolina***Slider Turtle***Trachemys scripta***Eastern Mud Turtle***Kinosternon subrubrum***Green Anole***Anolis carolinensis***Six-lined Racerunner***Aspidoscelis sexlineata***Five-lined Skink***Plestiodon fasciatus***Broadhead Skink***Plestiodon laticeps***Eastern Glass Lizard***Ophisaurus ventralis***Black Racer***Coluber constrictor***Eastern Ratsnake***Pantherophis alleghaniensis***Mud Snake***Farancia abacura***Rainbow Snake***Farancia erythrogramma***Corn Snake***Pantherophis guttata***Eastern Kingsnake***Lampropeltis getula***Red-bellied Water Snake***Nerodia erythrogaster*
*erythrogaster***Plainbelly Water Snake***Nerodia erythrogaster alta***Banded Water Snake***Nerodia fasciata***Brown Water Snake***Nerodia taxispilota***Rough Green Snake***Opheodrys aestivus***Glossy Crayfish Snake***Regina rigida***Copperhead***Agkistrodon contortrix***Cottonmouth; Water Moccasin***Agkistrodon piscivorus***Timber Rattlesnake***Crotalus horridus***East. Diamondback Rattlesnake***Crotalus adamanteus***Anhinga; Snakebird***Anhinga anhinga***Double-crested Cormorant***Phalacrocorax auritus***Little Blue Heron***Egretta caerulea***Snowy Egret***Egretta thula***Great Egret***Casmerodius albus***Great Blue Heron***Ardea herodias***Wood Stork***Mycteria americana***Wood Duck***Aix sponsa***Turkey Vulture***Cathartes aura***Black Vulture***Coragyps atratus***Mississippi Kite***Ictinia mississippiensis***American Swallow-tailed Kite***Elanoides forficatus***Red-shouldered Hawk***Buteo lineatus***Osprey***Pandion haliaetus***Wild Turkey***Meleagris gallopavo***Mourning Dove***Zenaida macroura***Barred Owl***Strix varia***Chuck-will's-widow***Caprimulgus carolinensis***Red-headed Woodpecker***Melanerpes erythrocephalus***Great Crested Flycatcher***Myiarchus crinitus***Tree Swallow***Tachycineta bicolor***Purple Martin***Progne subis***Blue Jay***Cyanocitta cristata***American Crow***Corvus brachyrhynchos***Carolina Wren***Thryothorus ludovicianus***Blue-gray Gnatcatcher***Polioptila caerulea***Northern Mockingbird***Mimus polyglottos***Brown Thrasher***Toxostoma rufum***Prothonotary Warbler***Protonotaria citrea***Northern Parula***Parula americana***Northern Cardinal***Cardinalis cardinalis***Red-winged Blackbird***Agelaius phoeniceus***Summer Tanager***Piranga rubra***Beaver (gnaw mark)***Castor canadensis***River Otter***Lutra canadensis***White-tailed Deer***Odocoileus virginianus*