



October 2017

Hello SCAN.

Last month we visited Jocassee Gorges Wildlife Management Area in Pickens County. We had a good turn-out of SCAN members including Jan Ciegler, Eva and Sam Pratt, Claire and Dave Scheutrum, Kim McManus, Paul Kalbach, Greg Ross, Marsha and Bob Hamlin, Jill Newberry, Kathy Boyles, Bert Pittman, Allison Smith, Ted Pappas, Janie Marlow, and Rita Zollinger, and Gordon Murphy.



The weather was absolutely beautiful as we gathered in the parking lot of a fisherman's access point at Eastatoe Creek. As we were finishing up our group photo and listening to Kathy and Bert tell us about the area, Paul found a brown snake (*Storeria dekayi*) in a rotten log next to the trail! This was an omen that we would have a good day in the field, and it turned out to be a great day!

The trails that we followed were well trodden by fishermen and, with the exception of a couple of spots, it was relatively easy walking. One really big tree, that we assumed was a casualty of hurricane Irma, required that we scramble up the hill to get around and back onto the trail. Shortly after clambering around the big tree, many of us ended up at a large rock that protruded out into the creek. That is where the second herpetological find of the day was made. I'm not sure who spotted it, but underneath a smaller rock that had to be stepped onto to get to the larger rock, a copperhead (*Agkistrodon contortrix*) was spotted underneath the rock. After numerous photos were taken, Greg carefully pulled the snake from under the rock for a better view.



This particular spot on the trail was very productive. Jill Newberry spotted Allegheny spurge (*Pachysandra procumbens*) adjacent to the trail. Bert and Kathy were very excited to have such an important find on DNR property. Bert said that he had seen this plant in Tennessee, but this was a first for him in South Carolina. We continued on the trail for a while before stopping for lunch at a pleasant spot along the creek.

By the time we had consumed our lunch and started back up the trail to explore upstream of the parking area, the humidity had increased such that even with the cooler temperatures, it was feeling pretty warm out. The trail upstream of the parking lot was much shorter, but it led to a spot in the creek where visitors had created a small dam of rocks, and a rope swing affixed to a tree branch! Well, as pointed out in previous newsletters, warm weather and a swimming hole is the perfect setting for SCAN members to take a dip, and some did just that!



After the refreshing dip in the creek, we still had time to visit another portion of the WMA before heading off for dinner. We traveled a short way down Highway 11 to another fisherman's access point to Eastatoe Creek. The hike from the highway down to the creek led us through a more xeric habitat than we had been in that day, which gave us an opportunity to observe different plant communities. Another plant that was observed that Bert was impressed with was green adder's tongue (*Malaxis unifolia*) found growing amongst running pine (*Lycopodium flabelliforme*). You know it is a good day when Bert gets excited about two plant species found on DNR property, in the same day!

After a wonderful day exploring the banks of Eastatoe Creek in Jocassee Gorges WMA, we gathered at Fiesta Mexican Restaurant in Pickens. Thanks you Kathy Boyle for scouting and leading the trip.

**Please note that there is a change in the destination for October's trip. Due to logistics issues with getting us out to North Island at Yawkey Wildlife Preserve, we will instead be visiting the Waccamaw Wildlife Refuge. It should be a good trip.**

On October 14<sup>th</sup>, SCAN officers, and others, gathered for the annual 2018 planning meeting. It looks as though we have another great line-up of trips for the coming year. Also, we are looking for a couple of volunteers, one to take charge of the Central Region and one for the Eastern Region of the state. Trip locations have already been identified for these regions for 2018 and current officers will be happy to provide guidance to anyone who wishes to fill the Regional Director positions. Please let me or Kim McManus if you are interested in helping out.

I look forward to seeing you all at Waccamaw Wildlife Refuge later this month!

A handwritten signature in black ink that reads "Gordon Murphy". The signature is written in a cursive, flowing style.

*The group photograph at Jocassee Gorges provided by Kim McManus.*

**Waccamaw Wildlife Refuge  
Georgetown County  
Saturday, October 28, 2017  
10:00 AM**

We will be traveling to Waccamaw Wildlife Refuge Saturday October 28<sup>th</sup>. It will be in two parts. We will meet at the headquarters of the refuge at 10:00 Saturday morning. It is located on US 701 fifteen miles or so south of Conway, and 21 miles north of downtown Georgetown. It is just south of major bridge construction on the highway which deletes several trails there we could have gone on. We will spend an hour there overlooking the beautiful Great Pee Dee River, which they do not seem to want us to launch kayaks there. There were a moderate number of birds there during the scouting trip, one of which was a yellow throated vireo. There were at least 15 varieties of butterflies on the numerous lantana plants, as well as other plants.

We will they caravan 13 miles or so to the Cox Ferry Lake Recreation Area of the Waccamaw Wildlife Refuge. It is quite beautiful with several miles of trails in the hard wood wetland forest. The boardwalk is closed because of Mathew, but the trails are nice, and not too long. There are very nice picnic areas there but the real positive is a canoe launch and quick access to the Waccamaw River. The current was mellow as I visited, and matched my general overall feelings for the place.

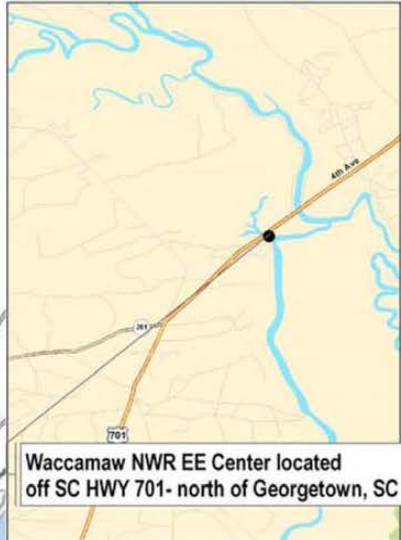
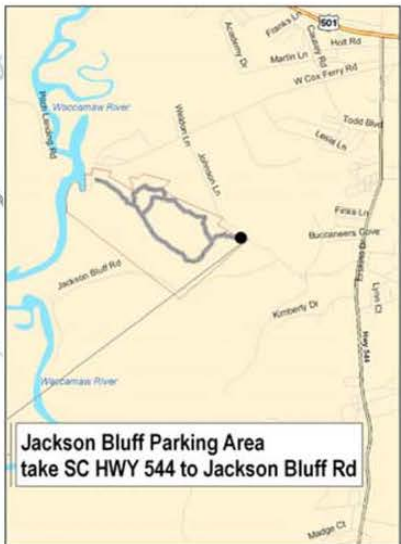
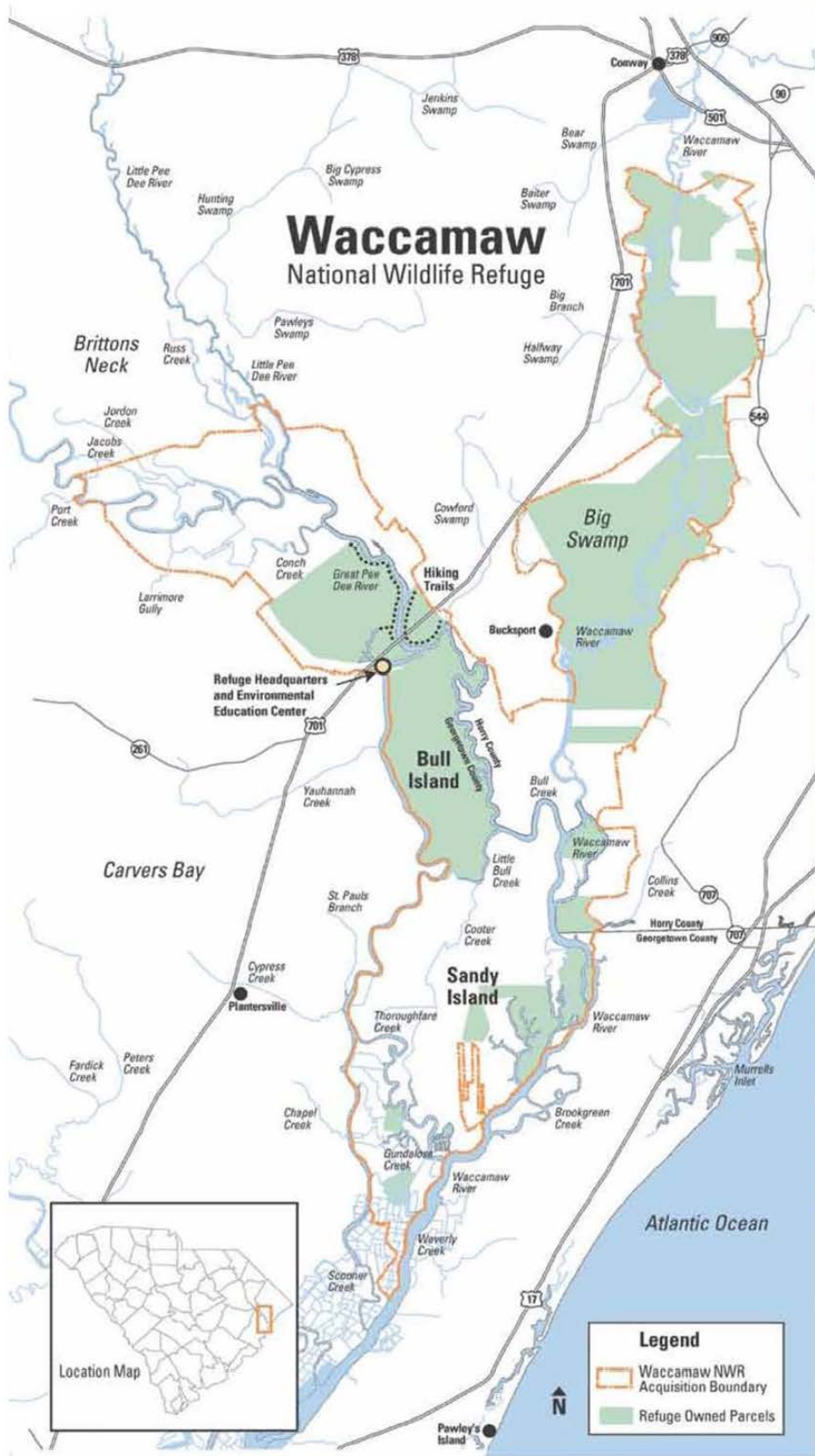
Conway is Conway, and I will work on a vegetarian place to eat, for those of us who do not like to kill. There are no vegetarian eateries in the backwoods.

Cheers Jeff Kline (843) 442-5000.

**Refuge Headquarters Address:** 21424 N Fraser Street (Hwy 701)  
Georgetown, SC 29440

**Coordinates:** 33°39'11.78" N  
79°09'43.02" W





Waccamaw National Wildlife Refuge  
21424 N. Fraser Street (Highway 701)  
Georgetown, SC 29440  
Phone: 843/527 8069  
Fax: 843/527 8494  
Website <http://www.fws.gov/waccamaw>  
E-mail: Marshall\_Sasser@fws.gov

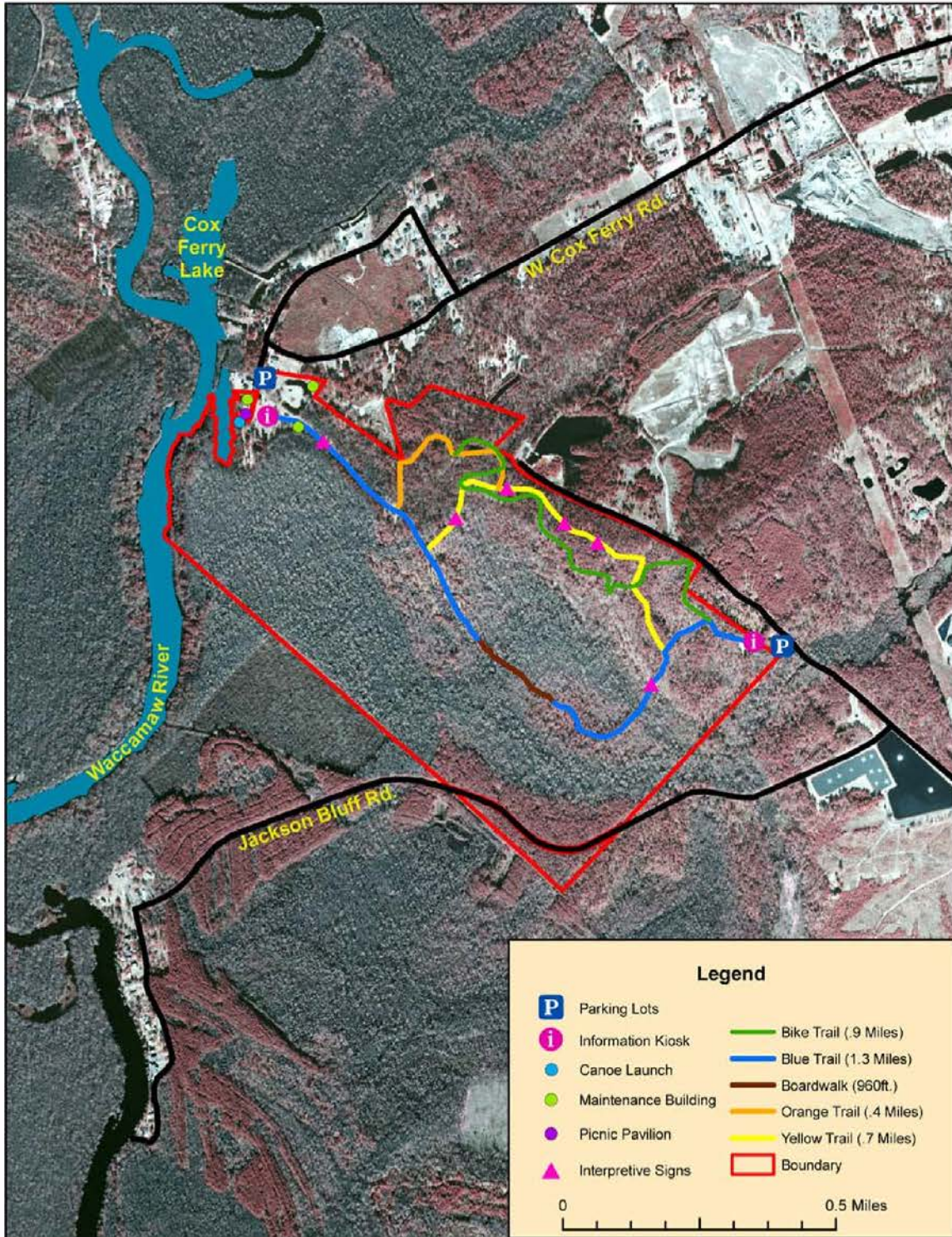






# Waccamaw National Wildlife Refuge

## Cox Ferry Lake Recreation Area



Headquarters & Visitor Center  
21424 N. Fraser St.  
Georgetown, S.C. 29440  
(843) 527-8069  
[www.fws.gov/waccamaw](http://www.fws.gov/waccamaw)



**Jocassee Gorges WMA**  
**Pickens Co., SC**  
**September 23, 2017**

This list was produced by SCAN from sightings produced by SCAN members and is subject to revision as needed. An asterisk (\*) indicates a new sighting for SCAN. Send any changes or corrections to Tom Jones at [prestoea@gmail.com](mailto:prestoea@gmail.com). Please indicate exactly to which flora/fauna list you are referring. Thank you.

**LICHENS**

*Pseudocyphellaria crocata*  
*Cladonia squamosa*  
*Hypotrachyna revoluta*  
*Hypotrachyna osseovalba*  
*Tuckermannopsis ciliaris*  
*Usnea rubicunda*  
*Usnea strigosa*  
*Porpidia albocaerulescens*  
*Dermatocarpon luridum*  
*Lepraria lobificans*

**FLORA**

**Liverwort**  
\* *Bazzania trilobata*

**Liverwort**  
\* *Frullania obcordata*

**Liverwort**  
\* *Pellia epiphylla*

**Starburst Moss**  
\* *Atrichum undulatum*

**Pincushion Moss**  
\* *Leucobryum glaucum*

**Fern Moss**  
\* *Thuidium delicatulum*

**Foxtail Moss**  
\* *Brachythecium acuminatum*

**Worm Moss**  
\* *Bryoandersonia illecebra*

**Knight's Plume Moss**  
\* *Ptilium crista-castrensis*

**Common Running-cedar**  
*Diphasiastrum digitatum*

**Cinnamon Fern**  
*Osmunda cinnamomea*

**Broad Beech Fern**  
*Phegopteris hexagonoptera*

**New York Fern**  
*Thelypteris noveboracensis*

**Christmas Fern**  
*Polystichum acrostichoides*

**Common Rockcap Fern**  
*Polypodium virginianum*

**Eastern White Pine**  
*Pinus strobus*

**Virginia Pine**  
*Pinus virginiana*

**Eastern Hemlock**  
*Tsuga canadensis*

**Common Dayflower**  
*Commelina communis communis*

**Marsh Dewflower**  
*Murdannia keisak*

**Giant Cane**  
*Arundinaria gigantea*

**Flexible Sasa-grass**  
*Microstegium vimineum*

**Solomon's-seal**  
*Polygonatum biflorum*

**Trillium**  
*Trillium* sp.

**Iris**  
*Iris* sp.

**Curlyleaf Yucca**  
*Yucca filamentosa*

**Catbrier**  
*Smilax bona-nox*

**Whiteleaf Greenbrier**  
*Smilax glauca*

**Common Greenbrier**  
*Smilax rotundifolia*

**Common Wild Yam**  
*Dioscorea villosa*

**Downy Rattlesnake-orchid**  
*Goodyera pubescens*

**Green Adder's-mouth**  
*Malaxis unifolia*

**Crane-fly Orchid**  
*Tipularia discolor*

**Tulip-tree**  
*Liriodendron tulipifera*

**Fraser Magnolia**  
*Magnolia fraseri*

**Common Pawpaw**  
*Asimina triloba*

**Sweet-shrub**  
*Calycanthus floridus*

**Virginia Snakeroot**  
*Endodeca serpentaria*

**Large-flower Heartleaf**  
*Hexastylis shuttleworthii*  
*shuttleworthii*

**Sharp-lobed Hepatica**  
*Anemone acutiloba*

**Virgin's-bower**  
*Clematis virginiana*

**Yellowroot**  
*Xanthorrhiza simplicissima*

**Witch-hazel**  
*Hamamelis virginiana*

**Winged Elm**  
*Ulmus alata*

**Hackberry**  
*Celtis* sp.

**Wood-nettle**  
*Laportea canadensis*

**Black Walnut**  
*Juglans nigra*

**American Chestnut**  
*Castanea dentata*

**American Beech**  
*Fagus grandifolia*

**White Oak**  
*Quercus alba*

**Rock Chestnut Oak**  
*Quercus montana*

**Red Oak**  
*Quercus rubra*

**Tag Alder**  
*Alnus serrulata*

**River Birch**  
*Betula nigra*

**American Hornbeam**  
*Carpinus caroliniana*

**Hazelnut**  
*Corylus* sp.

**Sweet White Violet**  
*Viola blanda*

**Walter's Violet**  
*Viola walteri*

**Yellow Passionflower**  
*Passiflora lutea lutea*

**Black Willow**  
*Salix nigra*

**Spotted Wintergreen**  
*Chimaphila maculata*

**Trailing Arbutus**  
*Epigaea repens*

**Mountain Laurel**  
*Kalmia latifolia*

**Mountain Doghobble**  
*Leucothoe fontanesiana*

**Sourwood**  
*Oxydendrum arboreum*

**White Rosebay**  
*Rhododendron maximum*

**Galax**  
*Galax urceolata*

**Silverbell**  
*Halesia tetraptera*

**Whorled Loosestrife**  
*Lysimachia quadrifolia*

**Climbing Hydrangea**  
*Decumaria barbara*

**Snowy Hydrangea**  
*Hydrangea radiata*

**Virginia-willow**  
*Itea virginica*

**Alumroot***Heuchera* sp.**Southern Agrimony***Agrimonia parviflora***Serviceberry***Amelanchier* sp.**Oneflower Hawthorn***Crataegus uniflora***Hog-peanut***Amphicarpaea bracteata***Eastern Redbud***Cercis canadensis canadensis***Common Partridge-pea***Chamaecrista fasciculata*  
*fasciculata***Naked Tick-trefoil***Desmodium nudiflorum***Sericea***Lespedeza cuneata***Eastern Sensitive-briar***Mimosa microphylla***Spring Silverberry***Elaeagnus umbellata parvifolia***Alternate-leaf Dogwood***Cornus alternifolia***Flowering Dogwood***Cornus florida***Southern Swamp Dogwood***Cornus stricta***Blackgum***Nyssa sylvatica***Buffalo-nut***Pyrularia pubera***Hearts-a-burstin'-with-love***Euonymus americanus***American Holly***Ilex opaca opaca***Allegheny-spurge***Pachysandra procumbens***Rhombic Copperleaf***Acalypha rhomboidea***Eastern Flowering Spurge***Euphorbia corollata***Virginia-creeper***Parthenocissus quinquefolia***Muscadine***Vitis rotundifolia rotundifolia***Chalk Maple***Acer leucoderme***Red Maple***Acer rubrum***Yellow Buckeye***Aesculus flava***Eastern Poison Ivy***Toxicodendron radicans radicans***Spotted Touch-me-not***Impatiens capensis***Devil's-walking-stick***Aralia spinosa***Water-hemlock***Cicuta maculata maculata***Pinkroot***Spigelia marilandica***Indian-hemp***Apocynum cannabinum***Self-heal***Prunella vulgaris***Green Ash***Fraxinus pennsylvanica***Japanese Privet***Ligustrum japonicum***Beechdrops***Epifagus virginiana***Cross-vine***Bignonia capreolata***Trumpet-creeper***Campsis radicans***Lobelia***Lobelia puberula***Partridge-berry***Mitchella repens***Northern Wild Raisin***Viburnum cassinoides***Black Haw***Viburnum prunifolium***Southern Black Haw***Viburnum rufidulum***White Snakeroot***Ageratina altissima***Pale Indian-plantain***Arnoglossum atriplicifolium***Leafy Elephant's-foot***Elephantopus carolinianus***Fireweed***Erechtites hieraciifolius***Common Heart-leaved Aster***Eurybia divaricata***Hollow-stem Joe-pye-weed***Eutrochium fistulosum***Cutleaf Coneflower***Rudbeckia laciniata***Rosinweed***Silphium compositum***Bearsfoot***Smallanthus uvedalius***Heart-leaved Aster***Symphyotrichum cordifolium***Long-stalked Aster***Symphyotrichum dumosum***Starved Aster***Symphyotrichum lateriflorum*  
*lateriflorum***Common Wingstem***Verbesina alternifolia***Ironweed***Vernonia* sp.**Yellow-tipped Coral***Ramaria formosa***Gill Fungus***Amanita* sp.**FAUNA****Froghopper***Prosapia bicincta***Dermeid Beetle***Cryptorhopalum triste***Brown Snake; DeKay's Snake***Storeria dekayi***Copperhead***Agkistrodon contortrix***Great Blue Heron***Ardea herodias***Turkey Vulture***Cathartes aura***Ruby-throated Hummingbird***Archilochus colubris***Belted Kingfisher***Ceryle alcyon***Downy Woodpecker***Picoides pubescens***Blue Jay***Cyanocitta cristata***Common Raven***Corvus corax***Carolina Chickadee***Parus carolinensis***Northern Cardinal***Cardinalis cardinalis***Black Bear (tracks)***Ursus americanus***Raccoon (tracks)***Procyon lotor*